

## SUPERIOR WET GRIP AND LONGER TIRE LIFE

THE NEW MICHELIN PILOT ROAD 3 SURPASSES  
EVEN ITS PREDECESSOR, THE FAMOUS  
MICHELIN PILOT ROAD 2. IT DELIVERS EVEN  
LONGER TIRE LIFE, AS WELL AS NO-  
TICEABLY SUPERIOR GRIP ON WET  
ROADS. MICHELIN PILOT ROAD 3  
PUSHES BACK THE LIMITS SO  
THAT YOU ARE READY FOR  
ALL EVENTUALITIES.

MICHELIN *PILOT* Road<sup>3</sup>



## SIZES

### FRONT

110/70 ZR 17 (54 W)  
110/80 ZR 18 (58 W)  
120/60 ZR 17 (55 W)  
120/70 ZR 17 (58 W)  
120/70 ZR 18 (59 W)  
110/80 R 19 59 V Trail

### REAR

150/70 ZR 17 (69 W)  
160/60 ZR 17 (69 W)  
160/60 ZR 18 (70 W)  
170/60 ZR 17 (72 W)  
180/55 ZR 17 (73 W)  
190/50 ZR 17 (73 W)  
190/55 ZR 17 (75 W)  
150/70 R 17 69 V Trail



MICHELIN *PILOT* Road<sup>3</sup>



EVEN LONGER TIRE LIFE AND EVEN MORE  
GRIP IN WET CONDITIONS THAN THE  
MICHELIN PILOT ROAD 2 !!!!

EITHER  
HE'S ON SIPPED,  
DUAL-COMPOUND  
**MICHELIN  
PILOT ROAD 3**  
TIRES...

...OR  
THERE'S GOING TO  
BE MORE SCRAPED  
SLUMPS AND TWISTED  
HANDLEBARS  
AROUND HERE!!!







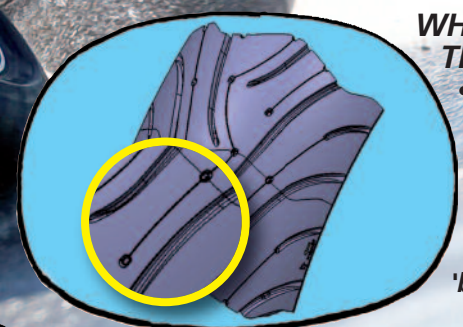
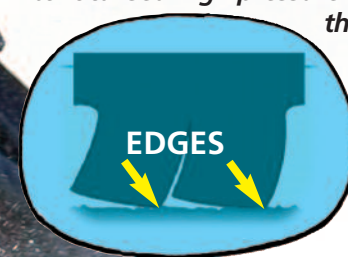
# XST SIPE TECHNOLOGY EXCEPTIONAL WET GRIP

With MICHELIN Pilot Road 3, the unexpected will leave you unfazed. Even a surprise puddle in the middle of a corner. MICHELIN Pilot Road 3's thin sipes literally slice through the film of water which is then cleared by the grooves of the tread pattern. Meanwhile, any excess water is temporarily stored in small 'wells'. Just theory? Not at all! Our tests\* prove that, thanks to MICHELIN XST technology, the wet grip performance of the new MICHELIN Pilot Road 3 is superior even to that delivered by its illustrious predecessor.

\*In-house test carried out at Fontanges, France, in March 2010.

## WHAT PURPOSE DO THE SIPES SERVE?

- They break up the film of water thanks to localised high pressure on the block edges, thereby enabling the tire to remain in contact with the ground.
- Water is cleared to the sides via the tread pattern's wide grooves.



## WHAT PURPOSE DO THE 'WELLS' SERVE?

- They increase the tire's water clearance capacity by temporarily stocking water.
- They enhance the efficiency of the sipes: on a rounded surface, it is better to have several small 'blades' than a single big 'blade'.



## WHAT EFFECT DO THE SIPES HAVE ON TIRE WEAR?

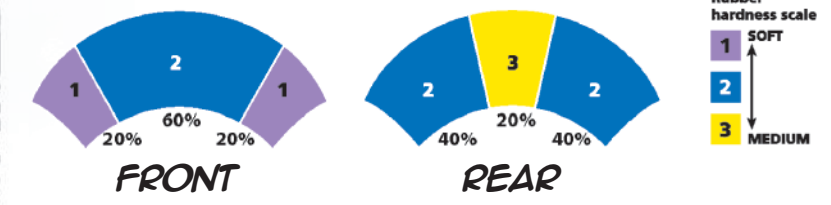
- The full-depth sipes maintain high performance throughout the tire's working life.
- The sipes are slanted to prevent uneven wear.



# LATEST-GENERATION 2CT TECHNOLOGY

To make sure that MICHELIN Pilot Road 3 surpassed even its celebrated predecessor, Michelin's engineers pulled out all the stops. The results of comparison tests\* on all types of roads and surfaces, and in all types of weather, revealed that MICHELIN Pilot Road 3 lasts even longer than MICHELIN Pilot Road 2, the category's previous benchmark in 2008 and 2009\*\*.

## 2CT CROSS-SECTIONS



## 2CT DUAL COMPOUND TECHNOLOGY

- Softer compounds on the shoulders for maximum grip
- Harder-wearing compounds on the centre of the tire tread for maximum tire life

\* Tire durability test carried out by DEKRA Test Center in 2010 comparing MICHELIN Pilot Road 3 with MICHELIN Pilot Road 2 (sizes: 120/70 ZR 17 and 180/55 ZR 17).

\*\* Wet grip and tire life tests carried out by DEKRA Test Center in 2008 and 2009 comparing MICHELIN Pilot Road 2 with rival 120/70 ZR 17 and 180/55 ZR 17 tires.

Bruno P.,  
Head Michelin Test Pilot

I NEVER CEASE TO BE AMAZED. EVERY TIME I TRY THE MICHELIN PILOT ROAD 3, IT OUTPERFORMS ALL OTHER PRODUCTS THAT I HAVE TESTED. IT EXPANDS THE LIMITS OF WHAT A TIRE IS CAPABLE OF. IT IS DIFFICULT TO FIND FAULT WITH THIS TIRE.