

ALL NEW CAFE
RACER SECTION +
UPDATED TOOLS
AND ACCESSORIES.

2014



EMIGO®

CLASSIC + CAFE

Motorcycle Parts/Accessories for Classic British, and Metric Motorcycles.
We keep the old models alive and well...on the road...for riders to enjoy.



Mufflers, Exhaust parts



Tank Badge sold separately

Gas Tanks



Mirrors/Viper Fairing



Shocks, Fork Tubes



Pistons Sets, Rings



Electronics

Air-Oil-Fuel Filters, Brakes Disc/Shoes, Control Cables, Handlebars/Control Assemblies,
Fork Tubes-Seals-Boots, Grip Sets, Speedometers-Tachometers, Head/Taillights,
Clutch Parts, Sprockets, Tools and much more. One Brand One Source. **EMIGO®**

A world wide supplier of Classic/Cafe parts

BRITISH

<u>DESCRIPTION</u>	<u>PAGE</u>
AIR FILTERS.....	45
AIR MAGNETO CONTROL ASSEMBLIES.....	39
BATTERY TRAY RUBBER.....	14
BRAKE PADS DRUMS.....	48
BRAKE SHOES.....	48
CABLE CLAMPS/CABLE ADJUSTERS.....	34
CABLES.....	30-37
CLUTCH PLATES, SPRINGS, CHAIN WHEELS...	8
CONTROL LEVERS.....	38-39
FOOT REST SETS, GEARSHIFT REPLACEMENT RUBBER.....	13
FORK SEALS, DUST BOOTS, GATORS.....	9
FORK TUBES, FORK SEALS.....	10
FUEL FILTERS, FUEL LINE.....	46
FUEL PETCOCKS.....	18
GAS TANKS, GAS CAPS, BADGES.....	17
GASKETS, GASKET SETS.....	50-51
GRIPS.....	52
HANDLEBARS, CLIP ONS, MOUNTING RUBBER.....	40-41
HANDLE BAR RISERS.....	42
HEADLIGHT BRACKETS.....	19
HEADLIGHTS, SPOTLIGHTS, BULBS, ACC.	21-23
HORNS.....	29
IGNITION SWITCHES.....	19
IGNITION COILS, ROTORS, STATORS.....	28
KICKSTART LEVERS, RETURN SPRINGS.....	12
MARKER LIGHTS, BULLET LIGHTS.....	27
MINI FAIRING.....	43
MIRRORS, MIRROR BRACKETS.....	44-45
MUFFLERS, MUFFLER ACCESSORIES, CLAMPS, BRACKETS.....	1-6
OIL PUMP, OIL FILTERS.....	45-46
REPLACEMENT RUBBER.....	15-16
RIM LOCKS, RIM STRIPS.....	9
RINGS, PISTONS, WRIST PINS, CLIPS.....	49
SHOCKS.....	11
SHOCK SHROUDS.....	12
SPEEDO GEAR BOXES, SPEEDOS, TACHS.....	29
SPROCKETS, FRONT AND REAR.....	7
STEERING LOCK.....	19
TANK (GAS) PAD SETS.....	14
TAILLIGHTS, BRACKETS, BLINKERS.....	24-26
TAX DISC HOLDERS.....	29
THROTTLE ASSEMBLIES.....	42

TOOLS AND ACCESSORIES

<u>DESCRIPTION</u>	<u>PAGE</u>
CABLE LUBERS.....	54
CARBURETOR SYNCHRONIZER.....	56
CHAIN BREAKERS, CHAIN RIVETING KIT.....	54
CHAIN BRUSH.....	56
CHARGERS (USB, BATTERY).....	56
CLUTCH HOLDING TOOL, WRENCHES.....	55
FORK OIL LEVEL METER.....	54
GOGGLES.....	53
IMPACT DRIVER.....	55
JUMPER CABLES.....	56
SAFETY WIRE PLIERS.....	55
SHOCK SPANNER WRENCH.....	54
SNAP RING PLIERS.....	54
SPARK PLUG WRENCH.....	55
SPOKE WRENCHES.....	53
T-HANDLE SETS.....	55
TIRE TOOLS.....	53
WRENCHES, BOX SETS.....	55

KAWASAKI

<u>DESCRIPTION</u>	<u>PAGE</u>
AIR FILTERS.....	68
BRAKE CABLE.....	68
BRAKE LIGHT SWITCH, NEUTRAL SWITCH....	62
BRAKE PEDALS.....	58
BRAKE SHOES, PADS.....	66
CLUTCH PLATES.....	69
COILS.....	61
CONTROL LEVERS.....	58-59
CRANKSHAFT COVERS.....	62
DISC BRAKE ROTORS.....	58
ENGINE COVERS.....	62
EXHAUST GASKETS.....	68
FENDERS, SIDE STAND, LIFT HANDLE, GRAB RAIL.....	57
FLASHER RELAY.....	61
FORK SEALS, GASKETS, WASHERS, CIRCLIPS.....	71
FORK TUBES, DUST BOOT COVERS.....	64
FOOTPEGS.....	58
GAS CAPS.....	62
GASKET SETS(COMPLETE, TOP END) HONDA, KAWASAKI, SUZUKI, YAMAHA.....	70
GRIPS.....	58
GAUGE COVERS, GAUGE BRACKETS.....	63
HEADLIGHTS, HEADLIGHT BRACKETS.....	60
MIRRORS.....	59
OIL FILTER, OIL FILTER BOLTS.....	69
SEALED BEAMS.....	60
SHIFT LEVERS.....	58
SHOCKS HONDA, KAWASAKI, SUZUKI, YAMAHA.....	65
SHOCKS (H1/H2, Z1/KZ).....	64
SPROCKETS.....	67
STARTER COVER GASKET.....	62
STATORS, STATOR COVERS.....	61
TAILLIGHTS, REPLACEMENT LENSES.....	60
TACHOMETER CABLE.....	68
TANK SIDE PANEL EMBLEMS.....	63
URNSIGNAL ASSEMBLIES.....	60-61
URNSIGNAL STEMS.....	61
VALVES, INTAKE, EXHAUST.....	62

CAFE RACER SECTION

<u>DESCRIPTION</u>	<u>PAGE</u>
AIRFILTERS, (CLAMP ON).....	72
CONTROL LEVERS.....	73
BAR END MIRRORS.....	72
BAR END WINKERS.....	74
EXHAUST REDUCERS, CLAMPS, BRACKETS.....	76
GOGGLES.....	79
GRIPS.....	73
HANDLEBARS, CLIP-ONS.....	73
HEADLIGHTS, HEADLIGHT VISOR.....	75
HEADLIGHT MOUNTING BRACKET.....	75
HEAT SHIELDS.....	76
IGNITION SWITCH (UNIVERSAL).....	74
IGNITION SWITCH MOUNTING BRACKET.....	74
LICENSE PLAT BOLTS.....	79
MINI FAIRING.....	79
MUFFLERS CUSTOM, ROADHAWK, MEGAPHONE.....	77-78
MUFFLER MOUNTING BRACKET.....	76
TAX DISC HOLDERS.....	79
TAILLIGHTS.....	74



Roadhawk 60 Megaphone

80-84035 Chrome

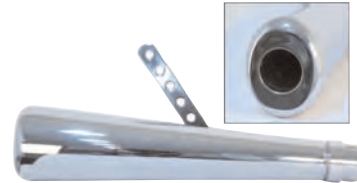
50'S-60'S styling for your period custom.
16-1/8" over all length, 3" diameter at the widest point,
1-3/4" inlet, perforated core baffles,
tapers from 1 to 1 1/2" at the exit.
Pinch bolt means no clamp needed at the header for a
smooth clean look. Fits right or left,
Mounting bracket and 3-pc reducers included.
Sold per. each



Roadhawk 50 Oval Megaphone

80-84031 Chrome

17.5" Overall length, 96mm x 76.5mm
at the widest point. 1 3/4" inlet.
Includes 3 piece reducer set,
clamp and mounting bracket.

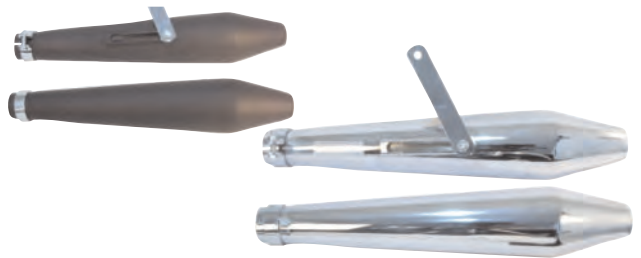


Cafe' Muffler

80-84033 Flat Black

80-84032 Chrome

Cafe' Muffler available in flat black or
chrome. 19" (483mm) overall length.
1 3/4" inlet. Straight through perforated
core type baffle. Slotted channel type
mount fits right or left.
1 5/8", 1 1/2" and 1 3/8" (3-pc)
reducer kit included.
Sold per. each

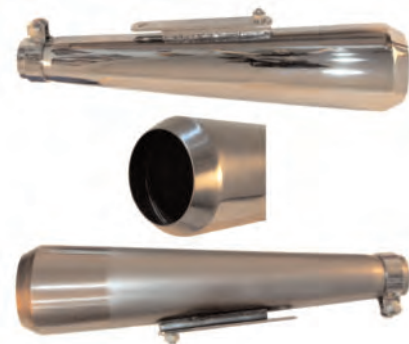


Reverse Cone Megaphone Muffler

Chrome Finish 80-84029

Raw Steel Finish 80-84029R

Modified version of our most popular
shorty reverse cone megaphone "Muffler".
We have completely gutted our 80-84030
leaving a true reverse cone megaphone.
The reverse cone is now welded as
there is no need for access to a baffle,
leaving a smooth traditional look.
Finish will be either double plate
chrome or raw steel. Perfect
for the current cafe racer revival.
1 3/4" inlet. includes 3 pc. reducer
set for smaller pipes.



**80-84041
Custom/Universal Muffler**

Similar to our 80-84043 (70T120/TR6) but
with an extended inlet pipe which helps with
fitment to OIF models. Inlet pipe is 1 1/2" i.d
and is supplied with a reducer for 1 3/8" pipes



NEW
AVAILABLE IN BLACK

80-84030 Chrome

80-84030B Black

**Universal Reverse Cone Shorty
Megaphone, 17" long, Complete with Inlet
Clamp, Sliding Mounting Bracket and
Reducers.**

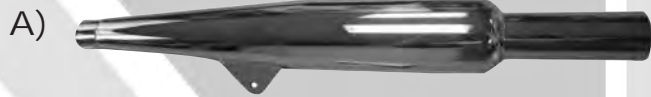


**80-84034
26" long Universal Megaphone Style,**

comes with Multi Reducer Set.
Fits: 1-3/4", 1-3/8",
1-1/2", & 1-5/8"



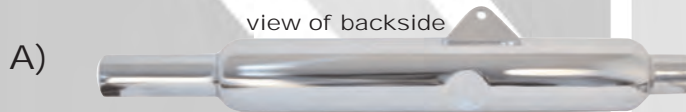
MUFFLERS FOR BSA



A) 80-84063 L/H
 B) 80-84064 R/H
 For BSA Rocket Goldstar
 Inlet size 1-5/8"
 Exhaust size 2"
 length 28 3/4"



80-84067
 For BSA DBD34 Goldstar
 Inlet Size 1-7/8"
 Exhaust size 2"
 Length 29"



A) 80-84069 L/H
 B) 80-84068 R/H
 For BSA A7/A10
 Swing Arm 1954-1957
 Inlet Size 1-1/2"
 Exhaust size 1 3/4"
 Length 24"



80-84070 L/H or R/H
 For BSA A10 Spring Frame
 1948-1957
 Inlet Size 1-1/2"
 Exhaust size 1 3/4"
 Length 24"



80-84076
 For BSA B31/33 Swing Arm
 (Single Cylinder) 1954-1957
 Inlet Size 1-5/8"
 Exhaust size 1 5/8"
 Length 24 1/4"



80-84077 L/H or R/H
 Universal Goldstar Style
 Straight Inlet,
 Slotted channel
 mounting bracket,
 Includes 3 pc. reducer set.
 Inlet Size 1-3/4"



BSA
 80-84040
 Fits: BSA C15/B40 1959 UP
 Replaces BSA OEM: 40-2760



BSA
 80-84046
 Fits: BSA C25/B25/B44
 Triumph TR 25 1967-1968
 Replaces OEM: 40-2841

BSA
A. 80-84047
BSA '63-'70 A50/65
Rplcs OEM: 68-2732
B. 80-84048
BSA A7/10
Rplcs. OEM: 42-2652

A



B



BMW
80-84061 Right
80-84062 Left
Replacement BMW Mufflers,
Replica of OEM Mufflers,
Fits '70 and later Twins



BMW
80-84065 Right
80-84066 Left
BMW 1969-1972 R50/5, R60/5, R75/5.



Triumph
80-84042
Fits: Triumph T140/150 '73 & up
I.D. 1-3/8"
Replaces OEM# 71-4159
71-3999



Triumph
80-84043
Fits: Triumph TR6/T120 '63-'70
I.D. 1-1/2"
Replaces OEM: 70-5866



Triumph
80-84056 L/H Offset inlet
80-84057 R/H Offset inlet
Fits: Triumph 3TA/5TA/T90/T100/1957-73
Replaces OEM: 70-2017 L/H
70-2018 R/H



Triumph
80-84058 L/H Duplex Frame
80-84059 R/H Duplex Frame
Fits: Triumph 6T/T110/T120 1960-62
Replaces OEM: 70-4118 L/H
70-4119 R/H



Triumph
80-84054 L/H
80-84055 R/H
Fits: Triumph 5T/6T T100/T110/T120
1955-1959
Replaces OEM: 70-3651 L/H



NORTON STYLE MUFFLERS, UNIVERSAL MUFFLERS



A

Universal "Dunstall" Style Replica Mufflers complete with inlet clamp, sliding bracket and sleeves. Muffler has a 1 5/8" I.D. without reducers. Sleeves are supplied to reduce I.D. to 1 1/2" or 1 3/8".



B

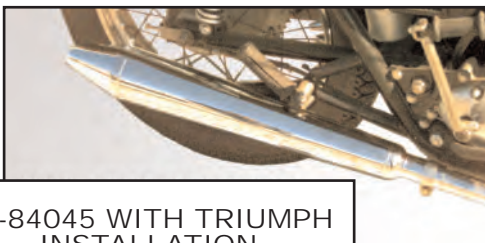
A. 80-84050
27-1/4" Long Wide-Mouth Outlet
B. 80-84051
27-3/4" Long Reverse Cone



A

Muffler for Norton & Triumph

A. 80-84044
Norton "Commando" style.
Fits right or left I.D. 1-3/8"
Fits: Commando Roadster,
Hi-Rider '70-'74 & Fastback '71-'72.
Replaces Norton OEM: 06-19178
B. 80-84045



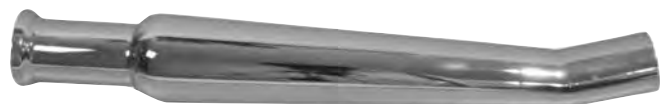
B

Same as above, with fittings for Triumph '73-UP 750 Twins and T150 Triples. I.D. 1/38" Gives a different look to your Triumph.

80-84045 WITH TRIUMPH
INSTALLATION



80-84010 Megaphone (Bell End) Style
Fits right or left



80-84012 Upswept left

80-84011 Upswept right with removable baffle available in upswept or standard style. 1-3/4 inlet with reducer to also fit 1-5/8, 1-1/2. Sold each



80-62680A Universal Slash Cut Muffler
19" Slash cut muffler accepts both 1 3/4" and 1 1/2" reducers. Features slider channel mounting with long universal bracket.



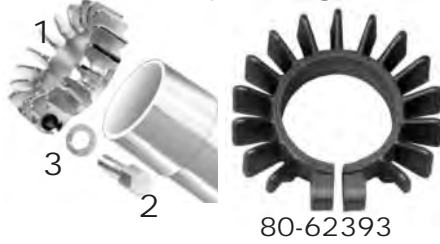
Shorty Muffler
80-03310
12" Shorty Muffler.
Left or Right Side
Fits: 1-1/2" or 1-3/4"

**Exhaust System for
Norton 750/850
Commando**



80-03260
Fits: 750CC Commando
Roadster '70-'73, 750CC
Commando Fastback '71-'72,
750CC
Commando Hi-Rider '71-'73,
Alternative Fitment: 850CC
Commando '73-'75.
Replaces Norton OEM: 06-3375/6
Note: 750 header clamps must
be used instead of 850 header
clamps on alternative fitment bike

**Triumph Exhaust
Clamps/Rings**

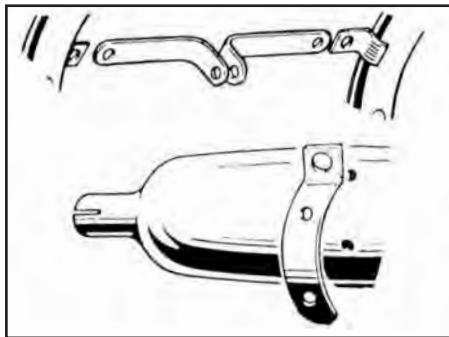


- 80-62393**
1. 80-62390 1-5/8" Clamp
 1. 80-62391 1-3/4" Clamp
 2. 80-62397 Clamp Bolt
 3. 80-62398 Hemispherical washer
- 80-62393 Aluminum Exhaust ring**
for Mid 1972 and up 650's,
750'S 1973-1980

**Triumph Exhaust
Pipe Set**



80-03250 Chrome
80-03251 Raw Finish
Fits: Triumph 650 '63-'72
Replaces Triumph OEM:
70-59557
Note: TR6 '69-'72 will
replace OE balanced pipes



Triumph Exhaust/ Muffler Brackets

80-62330
Header Pipe Bracket (Chrome)
Replaces OEM 70-6857
80-62331
Muffler Bracket (Black)
Replaces OEM 70-4951
10pcs each per Bag

**Muffler Adapters for
New Triumph Bonneville**



80-03255
These muffler adapter elbows
allow the installation of many
different aftermarket mufflers
on Hinckley Triumph Bonneville
standards, T100'S and Thruxton
models. Constructed from 18
gauge chrome plated steel.
Slips onto stock header pipes
and allows mufflers with
a 1 1/2" opening to be
easily mounted.



CHROME EXHAUST CLAMPS AVAILABLE IN TWO TYPES

SIZE	"A" STRAIGHT 6" STEM	"B" SHORT CLAMP
1-1/2"	80-62320	80-62340
1-5/8"	80-62321	80-62341
1-3/4"	80-62322	80-62342
1-7/8"	80-62323	80-62343
2"	80-62324	80-62344
3"	N/A	80-62372

**Norton
Commando
Muffler Rubber
Mounting Stud
43-99751**

When fitting new
mufflers, don't forget
to check the Lord
mounts. '68-'75 all
models, two required
per muffler.
'68-'74 Head steady,
top bracket to frame,
two required.
'68-'70 Gas tank, all
models, four required.
Bag of 10
Replaces Norton Oem
06-060622

REDUCERS, SILENCERS, BRACKETS, HEAT SHIELDS.



Exhaust Pipe Silencers



These muffler insert silencers come complete with mounting bolt and nut

- 80-78912 1-1/2" (38MM) X 4"
- 80-78921 1-1/2" (38MM) X 8"
- 80-78934 1-3/4" (44MM) X 4"
- 80-78943 1-3/4" (44MM) X 8"

THE 4" INSERTS ARE THE MOST POPULAR.

Exhaust System Reducers

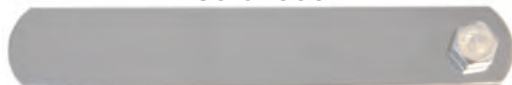


80-47310
This kit reduces 44.5mm to 42.5mm, 40.5mm and 38.5mm. 1mm thickness

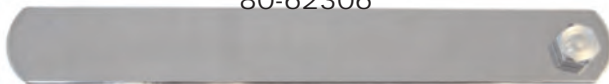
80-84009
1/16" thickness Reduces to 1 5/8", 1 1/2", 1 3/8" increments



80-62303



80-62306



80-62308



80-62316



80-62318

Muffler Mounting Brackets

Versatile chrome plated brackets. Useful for mounting mufflers or many other uses. Available in two designs.

Single Hole

- 80-62303 3" Long
- 80-62306 6" Long
- 80-62308 8" Long

6 Hole

- 80-62316 6" Long
- 80-62318 8" Long



80-03201



80-03200

Heat shields Chrome. Available in 7" short or 12" long. These leg protectors will help keep boots/pants from melting on your chrome exhaust pipes.

FITS 1 1/2" TO 2" OD PIPES

- 80-03202 4" Long
- 80-03200 7" Long
- 80-03201 12" Long





FRONT AND REAR SPROCKETS,

EMGO#	MAKE/MODEL	FIT /DESCRIPTION	OEM#	TEETH	FRONT/REAR
95-90018	TRIUMPH	T90/T100 '59-'74	57-1476	18	F
95-90019	TRIUMPH	T90/T100 '59-'74	57-1476	19	F
95-90020	TRIUMPH	T90/T100 '59-'74	57-1569	20	F
95-90118	TRIUMPH	T120/110T/6T/TR6 '47-'63	57-0471A	18	F
95-90119	TRIUMPH	T120/110T/6T/TR6 '47-'63	57-1715	19	F
95-90210	TRIUMPH	TR6/T120 '64-'73, T150 4 SPD.	57-1917	18	F
95-90219	TRIUMPH	TR6/T120 '64-'73, T150 4 SPD.	57-1918	19	F
95-90220	TRIUMPH	TR6/T120 '64-'73, T150 4 SPD.	57-1919	20	F
95-90221	TRIUMPH	TR6/T120 '64-'73, T150 4 SPD.	57-1919	21	F
95-90318	TRIUMPH	T120/140/160V 5 SPD.	57-4784	18	F
95-90319	TRIUMPH	T120/140/160V 5 SPD.	57-4783	19	F
95-90320	TRIUMPH	T120/140/160V 5 SPD.	57-4782	20	F
95-90321	TRIUMPH	T120/140/160V 5 SPD.	57-4785	21	F
95-90413	BSA	BANTAM		13	F
95-90414	BSA	BANTAM ALL MODELS		14	F
95-90415	BSA	BANTAM ALL MODELS	90-0068	15	F
95-90416	BSA	BANTAM ALL MODELS	90-0473	16	F
95-90513	BSA	BSA C15/B40		13	F
95-90514	BSA	BSA C15/B40		14	F
95-90515	BSA	BSA C15/B40		15	F
95-90516	BSA	BSA C15/B40		16	F
95-90517	BSA	BSA C15/B40		17	F
95-90518	BSA	BSA C15/B40		18	F
95-90519	BSA	BSA C15/B40		19	F
95-90612	BSA	BSA B25/B44/B50 C25*		12	F
95-90613	BSA	BSA B25/B44/B50 C25*		13	F
95-90614	BSA	BSA B25/B44/B50 C25*		13	F
95-90615	BSA	BSA B25/B44/B50 C25*		15	F
95-90616	BSA	BSA B25/B44/B50 C25*		16	F
95-90617	BSA	BSA B25/B44/B50 C25*		17	F
95-90618	BSA	BSA B25/B44/B50 C25*		18	F
95-90616	BSA	BSA B25/B44/B50 C25*		19	F
		* ALSO FITS TRIUMPH T25, TR25			
95-90818	BSA	A7/A10	67-3064	18	F
95-90819	BSA	A7/A10	67-3065	19	F
95-90918	BSA	A65	68-3093	18	F
95-90919	BSA	A65	68-3078	19	F
95-90920	BSA	A65	68-3073	20	F
95-90921	BSA	A65	68-3089	21	F
95-91218	NORTON	COMMANDO, LATE AMC TWINS	04-0456	18	F
95-91219	NORTON	COMMANDO, LATE AMC TWINS	04-0480	19	F
95-91220	NORTON	COMMANDO, LATE AMC TWINS	06-0931	20	F
95-91221	NORTON	COMMANDO, LATE AMC TWINS	06-0721	21	F
95-91222	NORTON	COMMANDO, LATE AMC TWINS	06-0759	22	F
95-91223	NORTON	COMMANDO, LATE AMC TWINS	06-3420	23	F
95-91224	NORTON	COMMANDO, LATE AMC TWINS	06-3421	24	F
95-95047	TRIUMPH	TR6/T120 '71-'74, TR7/T140 '73-'74 (CONICAL HUB)	37-3747	47	R
95-95050	TRIUMPH	T150 '71-'74	37-4046	50	R
95-95050	BSA	ROCKET 3 '71-'72 (CONICAL HUB)	37-4046	50	R
95-95146	TRIUMPH	5TA/T100 '66-'74, 6T/TR6/120 '66-'70 (8 HOLE)	37-1499	46	R
95-96243	TRIUMPH	T100/T120 BOLT ON DRUM SPROCKET '47-'55	37-1276	43	R
95-96246	TRIUMPH	T100/T120 BOLT ON DRUM SPROCKET '47-'55	37-0951	46	R
95-94800	TRIUMPH	BRAKE DRUM BLACK	37-1498		
95-95247	TRIUMPH	T140 '79 W/LESTER MAG WHEEL	37-7089	47	R
95-95343	TRIUMPH	T100, '59-'65, T120 '60-'65*	37-13676	43	R
95-95346	TRIUMPH	T100, '59-'65, T120 '60-'65*	37-1040	46	R
		* DRUM SPROCKET, QUICKLY DETACHABLE SPLINED TYPE			
95-95445	TRIUMPH	TR7/T140 '76-UP (DISC MODELS)	37-7072	45	R
95-95447	TRIUMPH	TR7/T140 '76-UP (DISC MODELS)	37-7064	47	R
95-96047	BSA	A65 '66-'70 (10 HOLE)	68-6088	47	R

CLUTCH CHAIN WHEELS CLUTCH PLATES, CLUTCH SPRINGS



88-58590

500/650 Pre-Unit TRI.
Models '54-'62 (S/Arm)
Single Chain 43T
Also BSA A10 '60-'63
Replaces OEM 57-1549



88-58591

T140, TR7 '73-'80 Triplex
Chain 58T
Replaces OEM 57-4640

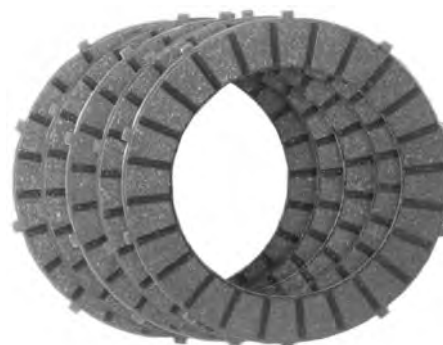


88-58592

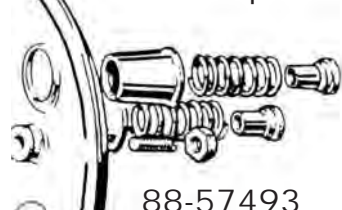
5TA, T100/110/120, 6T TR6
'60-'74 Duplex Chain
Replaces OEM 57-1570

EMGO# DESCRIPTION

- 88-57400 STEEL BACKED, BONDED FRICTION PLATE.
REPLACES TRIUMPH: 57-1362/57-4763 AND
BSA: 42-3192
FITS: BSA A7/A10 1960-1963 WITH 4
SPRING CLUTCH AND
A50/A65 1966-1972
TRIUMPH 350/500/650/750 56 ON
- 88-57406 6-PIECE SET OF ABOVE CLUTCH DISCS.
- 88-57440 BSA UNIT SINGLES C15/B25/B40/B44
B50 AND TRIUMPH SINGLES USING BSA
ENGINES BSA# 57-2726
4 PLATES REQUIRED PER BIKE.



Clutch Spring Set for Classic Triumph and BSA



88-57493

3 pc. Set in Polybag
Clutch spring kit.
Replaces Triumph oem: 57-1830
BSA oem: 68-3321
Fits: Triumph T120 '63 on
(3-Spring models)
BSA A50/65 1966-1972

Clutch Steel Plate Set for Classic Triumph/BSA

88-57436

Clutch Steel Plate set (6pc.)
Replaces Triumph
OEM: 57-1363
Fits: 500 5TA, T100 '60-'74,
650 ST, TR6, T110/120 '56-
'72, 750 TR7, T140 '73-'80
Replaces BSA OEM: 42-3195
Fits: BSA A7/A10 1960-1963
A50/A65 1966-1972





- 45-39658 Fits: 1964-1967 500/600 Triumphs, replaces oem: 97-1645
 45-39660 Fits: TR6/120/150 '68-'70, T100C/R '68-'74. BSA A50, A65 '69-'70
 Replaces Triumph/BSA OEM: 97-3635
 45-39661 Short Dust Cover Fits: T250, TR25W '70, TR5T '73-'74, T120 '71-'72, T140 '73-UP,
 T150/160 '71-'75, BSA B25, C25 '71, B50 '71-'73, A65 '71-'72,
 A75 Rocket 3 '72-'73 Replaces Triumph/BSA OEM: 97-4002
 45-39663 Fits: BSA A7/A/10 1956-1962, A50/A65 1962-1967 Replaces oem: 42-5320
 45-39664 Fits: Commando 850 European Style. Replaces Norton OEM: 06-5743
 45-39665 Fits: Commando 750/850 Dust Seal. Replaces Norton OEM: 06-1115
 45-39667 Fits: B44 Victor Enduro, B25, C25 '68-'70, A65 '68
 Replaces BSA OEM: 97-2513

EMGO#	DESCRIPTION	TIRE SIZE
16-26000	RIM LOCK 1.60	2.50-3.00
16-26010	RIM LOCK 1.85	3.25-3.50
16-26020	RIM LOCK 2.15	4.00-4.50
16-26030	RIM LOCK 2.75	4.75 & UP

All-Rubber Rim Locks



16-26000

EMGO#	DESCRIPTION
98-88791	RIM STRIP 21"
98-88794	RIM STRIP 14"
98-88796	RIM STRIP 16"
98-88797	RIM STRIP 17"
98-88798	RIM STRIP 18"
98-88799	RIM STRIP 19"
98-88790	RIM STRIP 10"

Rim Strips



98-88797

FORK TUBES FORK SEALS



45-39678



45-39672



45-39670



45-39674



EMGO#	REPLACES	DESCRIPTION	YEAR
45-39668	TRI 97-0382A	TRIUMPH TR6, T110, T120, T100	PRE UNIT MODELS
45-39669	TRI 97-1123	TRIUMPH T100A	60-63
		6T SHORT TYPE	63
45-39670	NOR 06-3423	COMMANDO 750/850	68-75
45-39671	NOR 06-7714	NORTON DOMINATOR 650SS	56-69
		ATLAS ROADHOLDER MODELS	56-69
45-39672*	TRI 97-4380	DISC BRAKE MODELS	73-UP
45-39673*	TRI 97-4007	CONICAL HUB MODELS	71-73
45-39674*	TRI/BSA 97-3904	T100	69-74
	SHUTTLE VALVE	T120, TR6	69-70
		T150	69-70
		BSA A75 ROCKET 3	69-70
45-39676*	TRI. 97-1889	TRIUMPH 5TA. T100	64-67
		T110, 6T, TR6, T120	63-67
		PRE SHUTTLE VALVE	
45-39677	BSA 90-5258	BANTAM D7, D10	
45-39678	BSA 68-5144	BSA C15 A65	64-67
45-39679	BSA 97-3906	BSA B25, C25	69-70
		B44 VICTOR ENDURO, B44	69-70
		A50/A65 SHUTTLE VALVE TYPE	69-70
* THESE FORK TUBES ARE AVAILABLE IN EXTENDED LENGTHS, ADD AN			
"A" TO THE PART NUMBER FOR 2" OVER, "B" FOR 4" OVER, OR "C" FOR 6" OVER			

Fork Seal Sets



19-90167

19-90167

Fits: BSA B25, C25 '67-'68, B44 Enduro & Special '66-'70, B44 Victor Roadster & Shooting Star '67-'68, A50, A65 '65-'68, A10 '62-'63, Triumph T250, TR25W '68
Replaces BSA OEM: 65-5451
Replaces Triumph OEM: 97-2641
(Pair(2pc.) in a point of sale slide pack)



19-90190

19-90190

Fits: T150/250, TR25W '69-'70
6T, TR6, T120 '64-'70, T100 '64-'74
Replaces Triumph OEM: 97-1500
19-90191 Fits: T100C, T120 '71-'72, T250, TR25W '71, TR5T '73-'74, T140 '73-'77, T150/160 '71-'75
BSA B25 '71, B50 '71-'73, A65 '71-'72, A75 '71-'72
Replaces Triumph/BSA OEM: 97-4001



SHOCKS FOR AMC,
AJS, BSA, MATCHLESS,
NORTON, TRIUMPH

NEW SHOCKS

17-05689 AMC Covered Springs (Must use oem bottom clevis)

17-05588 BSA B25 Chrome Spring

17-05598 BSA C15/B40 Chrome Springs

17-05599 BSA Rocket 70-71 Chrome Springs

17-05688 BSA Bantam D7, D10, D14

Girling type Light Weight

17-05587 Norton Wideline Chrome Springs

17-05589 Norton ES2



FOR TRIUMPH:

17-05682 With exposed springs

17-05683 Models with shrouds

Spring Rate 132 lbs.

Fits: 350/500, Twenty One,

3TA 1959 on, 3TA/T90 1963 on,

Speed Twin 5TA 1959 on,

5TA/T100SS 1963 on.

Bushing Dimensions: Top and bottom 24mm

long, 9.5mm inside diameter

Spring free length (un-installed) 215.1mm

FOR TRIUMPH:

17-05684 With exposed springs

17-05685 Models with shrouds

Spring Rate 145lbs.

T90 1969 on, T100SS, T100T Daytona Tiger

Bushing Dimensions, 24mm long

9.5 inside diameter

Spring free length (un-installed) 208mm

FOR TRIUMPH, BSA:

17-05686 With exposed springs

17-05687 Models with shrouds

Spring Rate 100 lbs.

T120V, T140V, Tiger, TR6C and CV

Trophy, TR7V Tiger 1972 on,

T150R, T150RV, T160V.

BSA: A50, A65, A70 1972

Bushing Dimensions: Top 24.7mm

9.5mm inside diameter bottom

Spring free length (un-installed)

220.5mm

FOR BSA, NORTON TRIUMPH:

17-05593 Covered Springs

17-05597 Exposed Chrome Springs

Spring rate 90lbs/in

(110 was offered for sidecar use)

Armstrong part# 134HAA

length 13.4" (339) mm bushing width 24mm

Fits: BSA A50/A65 1962-1970

BSA Rocket 3 1969-1972

Norton N15

FOR NORTON:

17-05680 With exposed springs

17-05681 Models with Shrouds
Spring Rate 110 lbs.

Fits: Norton Featherbed models '61 up

Bushing Dimensions: Top 28.7mm

long, 9.5mm inside diameter bottom

Spring free length (un-installed)

211.3mm

FOR NORTON:

17-05592

Spring Rate 126 Lbs

Fits: All Norton Commandos 750-850 To

1974 Length is 12.9" (329mm)

Bushing I.D. is 0.381" (9.5mm)

Bushing width 0.791" (19.1mm)

FOR AJS, BSA, MATCHLESS
AND TRIUMPH:

17-05590 Exposed Chrome Springs

17-05591 Covered Springs

Sold per set

Spring Rate 110 Lbs

AJS: Model 5, 6, 6S 1963 on, Model 16/18
1963 on

Model 31, 31CSR 1963 on, Model 33 1965 on

BSA: A7/A10 1958 on, A50RS Royal
Star 1971-72 A65 Lightning, Firebird,
Thunderbolt 1971-72A70

Lightning 1971-72, B312/B33 1958 on,

B25R, B25T, B25SS, B50R, B50T, B50SS All

MATCHLESS: CSR Sports Twin, G3,
G80, G12, G12CSR, G15,

G15SR Competition 1965 on

TRIUMPH: T25SS 1970, T35 Bandit,

TR5 1958 up, TR5A, TR5C 1960 up,

T100C, T100R 1969 up, TR5 Adventurer,

TR6 1958 up, 6T 1960-62, T110 1960 up,

T120 1960-62, TR6C, TR6R, 1960-70,

T120R 1969-70, TR6 1972, TR6S,

TR6C, TR6C Trophy

1970-72, T150 1969-70, T150V 1973-75

Length 12.9" (37mm) Bushing I.D. 9.5mm

bushing length 24mm

REPLACEMENT SHOCK SHROUDS
KICKSTART LEVERS, SPRINGS,
GEARSHIFT LEVERS



REPLACEMENT SHOCK SHROUDS



17-05595 Chrome bottom cover all Emgo British shocks.
17-05596 Black upper shrouds (129 Long) All Emgo British shocks except BSA A65.
17-05585 Black upper shroud (155mm long) BSA A65.
C15, B40, BSA Rocket III.

REPLACEMENT KICKSTART LEVERS

Return Springs,
Side Stand Springs



83-61694
Kickstart Spring

Rplcs Tri. oem:
53-0031



83-61644
Chrome Side Stand Spring

Rplcs Tri. oem:
82-8382

83-61645
Center Stand Return Spring
Fits: 650, T120, TR6, '63-'70 Triple, T150, T160 '69-'75
Rplcs Tri. oem:
82-4671

83-61648
Side Stand Spring
Fits: T100, T120
Rplcs. Tri. oem:
82-2610

83-61649
Center Stand Spring
Fits: T100/120/150
Rplcs. Tri oem:
82-3617



83-61695
Norton Featherbed/AMC
Replaces oem: 04-0434
Sold Without Rubber

83-11471
Kick Start Rubber
Open End Norton-AMC
Replaces oem: 03-3218
For 83-61695



83-61693
Norton kick start lever.
Replaces oem:
06-1464
Fits all Commandos up to and including 1974



83-61691
TRIUMPH
Fits: T90, 100
1957-1964
Rplcs Tri. oem:
57-1677



83-61690
BSA
Fits: BSA A7, A10, A50, A65, B25, B44, B50
Rplcs BSA oem:
57-2764



83-61692
TRIUMPH
Fits: 650 Twins '63-'71 & Twins/Triples '73-on
Rplcs Triumph oem:
57-3632/57-7018

GEARSHIFT PEDALS

(Note: Shift levers come without rubber peg.)



83-88094
TRIUMPH/BSA
Fits Triumph TR25/TR25SS
Rplcs Triumph OEM: 57-1164
Fits: BSA A50/65, B25/25SS/40/44 B50, C15/25
Replaces BSA OEM: 40-3073



83-88095
TRIUMPH
1963- '79 650 TRI
1973 on 750 Tri Twin



83-87985
NORTON
For Norton Commandos
Rplcs oem: 06-1499

GEARSHIFT / KICKSTART RUBBERS

83-11460



TRIUMPH
Gearshift Rubber
with logo
Fits 1967 and earlier
replaces OEM:
57-0449

83-88091



TRIUMPH
Gearshift
Rubber
Fits Triumph Twins

83-88092



NORTON
Gearshift
Rubber
Fits: Norton
Atlas/Commando
Replaces
OEM:
040086

83-11471



NORTON
Kickstart
Rubber
Open Ended.

83-11470



TRIUMPH
Kickstart
Rubber
Open Ended.
Replaces
OEM:
82-1695

83-88090 TRI/BSA '68-on Gearshift Rubber Replaces oem 57-2450

REPLACEMENT FOOTREST RUBBERS

54-05477



TRIUMPH
Replaces
OEM:
82-1695

54-05460



TRIUMPH
Fits: T120/150
(Pre '79)
Replaces
OEM:
82-9279

54-05461



TRIUMPH
Fits: T140
('79up)
Replaces
OEM:
83-7256/7

54-05464



BSA
FOOTPEG
RUBBER



Footpeg
rubber
without
logo
rplcs.
BSA OEM
29-7551

FOOTREST SETS AND STUDS



54-05470
Folding
universal
pillion
footrest set
(pair)

50-26615
Universal
Triumph
highway
pegs.

54-05463



BSA
A65 Oil in
frame models
Replaces
OEM:
83-2651

54-05466



NORTON
'57-'75,
4-7/8 x 9/16
Bore.
Replaces
OEM:



54-05473
NORTON Footrest Stud
Fits: Norton '67-'74 models
Replaces OEM: 06-2734

Tank pad sets, Battery Accessories Rubber covers



43-06730

Triumph knee pad Set
fits T100/T120 Models,
1968-'70 TR6/T120
rpls Triumph oem: 82-8192,
82-8193.



43-06731

Triumph knee pad Set
fits 1966-1967 Models
replaces Triumph oem:
82-5401, 82-5402.



43-06732

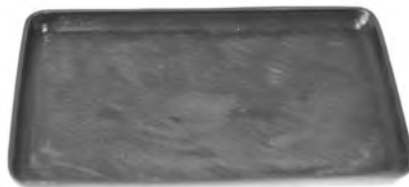
Triumph bolt on knee pad Set
Rpls oem: 82-2551, 82-2552
pre unit models 1938-1962
with 4-gallon gas tanks, and
1963-1965 UK spec unit
construction 6T Thunderbirds
and 120 Bonneville.

84-15633



Battery Retaining
strap anchor

Fits: '66-'74 500 Twins
'66-'70 650 Twins
replaces Tri. oem: 82-8032



84-15630
Rubber Battery
Tray

Fits: 1966-'70 Triumph
replaces Tri. oem: 82-8091



84-15632

Triumph Battery
Tray Rubber
rpls: oem: 82-6968
Fits 500/650/750
Twins 1966-on
Packaged 10 per bag
20-per case

43-99766



Isoclastic gaiter front engine
mount for '68-'74 Nortons
Replaces Norton oem:
06-3718

43-99764



Isoclastic gaiter rear engine
mount for '68-'74 Nortons.
Replaces Norton oem:
06-3719

43-99791



Rubber Cover for Triumph
Speedo and Tach
Fits Twins and Triples
Tachs and Speedo on page 29
Replaces Triumph
oem: 60-2600

ITEMS IN ITALICS ARE NEW ITEMS

EMGO #	REPLACES	DESCRIPTION/FITS	YEAR
<i>23-93120</i>	<i>TRI. 82-8091</i>	<i>HANDLEBAR MOUNT RUBBER</i>	<i>1963 UP</i>
		<i>ALL 63 AND UP EXCEPT C-MODELS</i>	
84-15630	TRI. 82-6968	BATTERY TRAY RUBBER	
84-15632	TRI. 82-6968	BATTERY TRAY RUBBER GROMMETS	
		500/650/750 TWINS	1966 UP
43-06730	TRI. 82-8192/93	TRIUMPH KNEE PAD SET	
		T100/T120	
43-99731	TRI 82-5401/02	TRIUMPH KNEE PAD SET	1966-1967
43-99761	TRI 83-2626	CARB TO FILTER T120/140	
43-99760	NOR 06-2537	CARB TO FILTER FOR COMMANDO	1969-1974
43-99762	TRI 83-2625	CARB TO FILTER TRIUMPH TR6	1971-1972
		BSA A65	
43-99763	TRI 82-9562	CARBS TO AIR FILTERS	
	BSA 82-9562	BSA TRIUMPH TRIPLES	71-UP
43-99764	NOR 06-3716	REAR ISOCLASTIC GATOR	
		COMMANDO	1968-1974
43-99765	TRI 97-4461	HEADLIGHT BRACKET RUBBER RING	
		T140/TR7	ALL
43-99766	NOR 06-3718	ISOCLASTIC GAITER FRONT	
		ENGINE MOUNT	1968-1974
43-99770	TRI 99-9980	TR7RV/140	1973 UP
	LUCAS 862217	TWINS	1971 UP
		NORTON	1956-1975
		BSA	1966-1970
<i>43-99771</i>	<i>TRI 71-1345</i>	<i>INNER ALTERNATOR GROMMET</i>	
<i>43-99772</i>	<i>TRI-70-4144</i>	<i>OUTER ALTERNATOR GROMMET</i>	
24-71590	TRI 82-9	COIL MOUNTING RUBBER T120/T140	
43-99790	BSA 67-5088	NACELLE SPEEDO RUBBER MOUNT	
		BSA A/B/M MODELS	
43-99791	TRI 60-2600	RUBBER COVER FOR SPEEDO/TACH	
		TWINS AND TRIPLES	
43-99750	NOR 06-0636	OIL TANK MOUNTING RUBBER STUD	
		NORTON COMMANDOS	
43-99751	NOR 06-0622	ENGINE/MUFFLER RUBBER	
		MOUNTING STUD FOR COMMANDO	
43-99780	TRI 82-6673	GROMMET FOR OIL TANKTOP, SIDE PANEL	
	BSA 68-8367	TRIUMPH 500	1968-1974
		TRIUMPH 650	1968-1970
		SIDE PANEL ONLY:	
		TRIUMPH 650	1971-1973
		TRIUMPH 750TWIN	73-UP
		BSA 650 TWIN	1971-1972

REPLACEMENT RUBBER



EMGO #	REPLACES	DESCRIPTION/FITS	YEAR
43-99781	TRI-826039	GROMMET OIL TANK LOWER:	
		TRIUMPH 500	1960-1974
		TRIUMPH 650	1968-1970
		TRIUMPH T150	1969-1974
		BATTERY CARRIER:	
		TRIUMPH 650	1971-1973
		BSA 650	1971-1972
		TRIUMPH 750 TWIN	1973-UP
43-99782	TRI 82-5228	GROMMET FOR TRIUMPH TANK (FRONT)	
	(PLAIN)	500, T150/160 TRIPLES	1964-1974
		650 TWINS	1964-1970
43-99783	TRI 82-5336	GROMMET FOR TRIUMPH TANK (REAR)	
	(DOUBLE SPIGOT)	500 T150/160 TRIPLES	1964-1974
		650 TWINS	1964-1970
43-99738	BSA 82-9064	TANK CENTER RUBBER (REAR)	
		BSA B25	1967-1968
43-99739	BSA 83-1658	GAS TANK RUBBER (REAR)	
		BSA B25	1967-1968
43-99740	BSA 68-8081	GAS TANK RUBBER (REAR)	
		A50/A65	TO-1970
43-99741	BSA 68-8017	GAS TANK RUBBER (FRONT)	
		A50/A65 (4-GALLON TANK)	1966-1970
43-99742	BSA 68-8110	GAS TANK RUBBER (FRONT)	
		A50/A65 (2-GALLON TANK)	1966-1970
43-99747	TRI 83-4932	TUNNEL RUBBER (FRONT)	
		T120/140	1971-UP
43-99748	TRI 82-0967	GAS TANK RUBBER (REAR)	
	(PLAIN)	TRIUMPH 500	1954-1974
		TRIUMPH 650	1954-1970
		TRIUMPH T150 TRIPLE	1969-1974
43-99749	TRI 82-5229	GAS TANK RUBBER (FRONT)	
	(SPIGOT)	TRIUMPH 500	1964-1974
		TRIUMPH 650	1964-1970
43-99738	BSA 82-9064	TANK CENTER RUBBER (REAR)	
		BSA B25	1967-1968

Replacement Gas Caps for Triumph



43-73490
Fits: Early ('50"s and up)
Replaces oem: 82-3220
43-73491
Replacement Gasket
Replaces oem: 82-4048
Fits Gas Tank 43-91620

Replacement Replica Triumph Gas Tank

Tank Badges not Included



43-91620
Fits: 1966-1970 Bonneville, TR6
Replaces oem: 82-9702

Gas Tank Filler Necks

43-91627
For custom modifications
Fits Triumph tank shown.
Sold in bags of 10.



43-91642
Very useful for custom tank
fabrication or a "Frisco"
style. For use on all of our
custom tanks such as our
Alien, Mustang and
Sportster replica models.



Custom Gas Tanks

EMGO#	Description
43-91605	2.2 Gallon Single fill Mustang Tank
43-91606	2.2 Gallon Dual fill Mustang Tank
43-91603	2.8 Gallon Single fill Mustang Tank
43-91604	2.8 Gallon Dual Fill Mustang Tank
43-91601	3.3 Gallon Single fill Tank
43-91602	3.3 Dual Fill Mustang Tank
43-91631	2.2 Gallon Single fill Alien Tank
43-91632	2.2 Gallon Dual fill Alien Tank
43-91640	1958-1978 Sportster Peanut Tank

43-91640



43-91601



Tank Badges

Sold as a pair with mounting screws



43-91622
Eyebrow Badge
Replaces Triumph
oem: 82-6887/88



43-91624
Replaces Triumph
oem: 83-5361



43-91626
Triumph Garden
Gate Bridge
Replaces Triumph
oem: 82-4127/28



43-91621
Replaces Triumph
oem: 82-9700
Same as
43-91620B
But unpainted

43-91620C
Short 8mm
Replaces oem:
82-7888

Triumph Tank Badge screws
Sold in bags of 50

43-91620D
Long 17mm
Replaces oem:
83-1339

FUEL PETCOCKS, REPLACEMENT SWITCHES



Fuel Petcocks

43-67182



43-67183



43-67184



EMGO#	DESCRIPTION	OEM#
43-67181	ROUND LEVER STYLE 1/4" X 1/4" SMALL BORE	
43-67182	FLAT LEVER WITH INDICATOR AND LOCKNUT 1/4" X 1/4" (WITH TUBE)	
43-67183	FLAT LEVER WITH FILTER AND LOCKNUT 1/4" X 1/4" WITH FILTER STRAIGHT THROUGH	83-2801
43-67184	FLAT LEVER 1/4" X 1/4" WITH FILTER AND LOCKNUT (WITH TUBE)	82-2800
43-67185	FLAT LEVER WITH INDICATOR AND LOCKNUT 1/4" X 1/4" STRAIGHT THROUGH	60-4512



46-68833



46-68733 Black Wire
46-68733A Grey Wire



46-15410



46-68822



46-68736



46-68740

Replacement Switches

EMGO#	DESCRIPTION/FITS	REPLACES
46-68733	REPLICA LUCAS HORN/DIP SWITCH	
BLACK WIRE	WIRE IS 27" IN LENGTH AND COMES IN	
46-68733A	IN GREY OR BLACK	LUCAS 31563
GREY WIRE		
46-68833	HEADLIGHT SWITCH TRIUMPH 500 TWINS '68-'74 650 TWINS 68-78 TR7RV/T140V '73-'78 NORTON COMMANDO '68-'70 BSA TWINS AND VARIOUS SINGLES '68-'70	LUCAS 31788
46-15410	ENGINE OFF SWITCH BSA A75, '69-'70 TRI T100C/TR6C '66-'70 TRI T120R '66-'67 TRI T150 '69-'70 TRI TR5T '73-'74	35835
46-42550	BRAKE LIGHT SWITCH BSA A7/A10 '54-'63 TRI 500 '64-'70 TRI 650/T150 '64-'70	54033234
46-42560	BRAKE LIGHT SWITCH NORTON COMMANDOS '68-'75 TRI BSA TRIPLES '71-UP BSA TWINS '71-UP SINGLES	34815
	<i>WIPAC DUCON/TRICON REPLICA SWITCHES WITH WIRING</i>	
46-68821	DUCON HORN/DIPPER SWITCH	(WIPAC REF) 101357
46-68822	TRICON HORN/DIPPER & ENGINE CUT-OUT OR MAIN BEAM FLASHER	(WIPAC REF) 101358
46-68730	LUCAS STYLE HORN OR KILL SWITCH FOR 7/8" BARS	76204
46-68732	1" TRIUMPH PRE-UNIT MILLER STYLE HORN/DIP SWITCH	76201
46-68736	FOR 7/8" BARS COMES WITH 19" WIRE HARNESS	157HV
46-68740	3-POSITION (HORN-HI-LOW) FITS MANY '56-'70 MODELS DRILLED BRITISH MODEL HANDLEBARS OR LEVER. COMES WITH 24" WIRE HARNESS (UK) <i>WIRE HAS BEEN EXTENDED BY 8" FROM PREVIOUS SWITCH. THE WIRE HAS BEEN MODIFIED FROM BLACK TO GREY</i>	31563

NEW British Steering Lock



British Steering Lock
40-81090
BSA oem# 68-5050,
Norton oem# 03-0175
Triumph oem# 82-6738
BSA A7/A10/M20/M21 1954-1962
BSA B31/B33 1959 up,
A50/A65 1966 up
A75 Rocket III 1969 up
Norton Twins 1963-1974
Triumph 350/500/650/750 twins
and Triples 1967-1979

Headlight Brackets



66-35380 Polished Aluminum Finish
66-35832 Satin Black Finish
Now available in Satin Black finish.
Shims included in Kit:
35mm, 39mm, 41mm,
Sold as a pair



40-64000
Universal Ignition/
Light switch.
Three
position.comes
with two keys.
Ideal British bike
replacement for
many models



*40-64081
Switch
Assembly
Body for
Classic British.
Fits: Norton Atlas/
Commando '67-'70
Triumph T140 '73-'78,
500cc T100 '66-'74,
650cc TR6/T120 '66-'70,
BSA A50/65 '66-'70,
750cc A75 '69-'72 &
also various singles
replaces Lucas oem: 30608

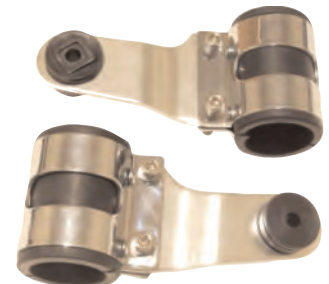
*40-64082 Switch and
Keys for 40-64081 sold
as a single unit.



*40-64080
Replaces oem:
5433S169
Ignition Lock
with 2-keys
Fits all models '66-up
with Lucas 30608/39784 etc.
And use with
EMGO # 40-64081



66-35800 Chrome Plated
66-35810 Black finish
Universal headlight
brackets that will fit most
front forks. Each pair
includes all mounting
hardware.



66-35850
Universal Heavy Duty
Aluminum/Chrome
Plated Steel Bracket
35MM Sleeve included
*Sleeves now available
in more sizes*
66-35855 32mm
66-35851 35mm
66-35852 38mm
66-35854 41mm



40-64070 Lucas Replica
Ignition/Lightning
Switch
For Late model Triumphs.

Universal Ignition
Switch Bracket



40-64050
Chrome plated
universal
switch bracket.
Switch hole is
22.5mm, bolt
hole is 9.5mm
overall length
is 75mm



6-1/4" Replacement Headlights

These Good Looking, inexpensive replacement headlight units are available in Chrome or Gloss Black w/ Chrome rims.

6-1/2" between fork ears mounting holes.

Replacement H4 bulb: 48-67700

Standard bulb: 48-65802

Chrome:

66-64310 w/ Quartz unit no bulb

66-64312 w/ Quartz unit plus H4 bulb

66-64314 w/ Standard bulb/glass

Light Unit Only

66-64313 Quartz use w/ H4 bulb

66-64343 Standard bulb

Black Shell

With H4 bulb 66-64313

Standard bulb 66-64315



Triangular Spotlamp

Available in chrome or black

Chrome 66-84166

Black 66-84168

Popular style back in the 60's.

Very similar to our 66-84164

but with a single filament bulb

(H3 12v/55w) and a shallower

more rounded shell.



Aris Replica Headlight

66-84164

Popular back in the late

60's to early 70's

this new replica now has a

takes a H6 12V 35/35W Bulb



48-67790

12V H6 35/35W Replacement Bulb for our

triangular headlamp #66-84164

Sold in boxes of 10.



Shallow 4.5" Cruiser Spotlight

66-84172A

Same spotlamp as 66-84172 (Pictured)

Except the sealed beam light unit has a clear lens rather than a fluted lens.

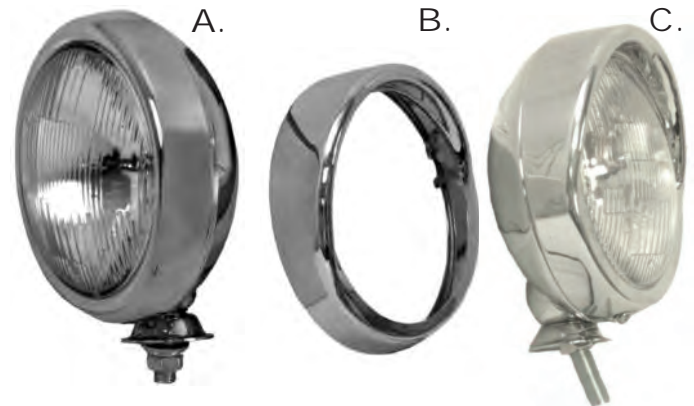


66-84172

12V 30W Sealed beam only 66-84176

4.5" Shallow Cruiser Style

- Without light unit 66-84170
- With E mark (europe) light unit 66-84171
- A. With made in usa light unit 66-84172
- Light unit only 66-84173T
- E mark light unit only 66-84174
- Rim only 66-84175
- B. Hooded Rim Only 66-84177
- 4.5" Spotlight and Hooded rim without light unit. 66-84178
- C. Complete light unit with Hooded Rim. 66-84179



Classic Lighting
All New 5 3/4" diameter
8" length classic styled
Custom headlights
Both lights have clear
lens with diamond
cut reflector,
4H 12V 60/55 halogen
bulb and both
bottom mount



66-84147 Non Hooded 66-84146 Hooded

Bullet Headlamp
66-84196 4.5" Bullet shaped
bottom mount headlamp.

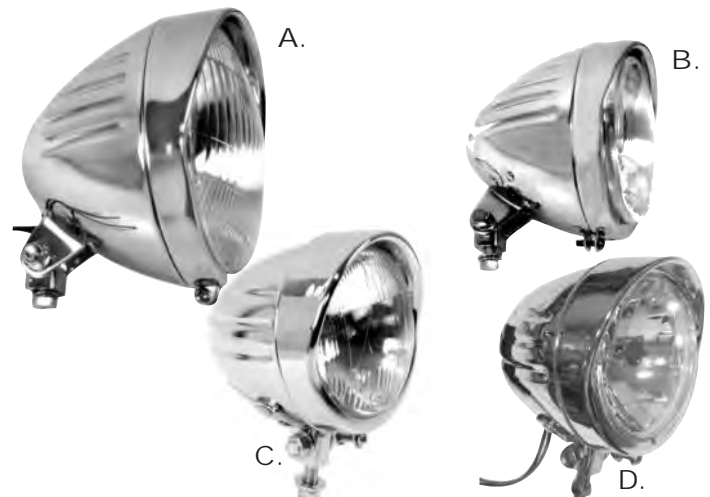
Hooded rim, clear lens with
diamond cut reflector 12V
60/55W H4 bulb



Buffalo Lights

Good looking chrome plated
steel body lights with
slotted side design.

- A. 66-65082
- 6.5" headlight with H4 60/55 watt P43T halogen bulb (48-67700)
- B. 66-84142
- 5.75" headlight with H4 60/55 watt P43T halogen bulb (48-67700)
- C. 66-84192
- 4.5" spotlight with H3 55 watt halogen bulb (48-67730)
- D. 66-84194
- 4.5" headlight 60/55 high low H4 halogen Bulb clear lens with diamond cut reflector.



HEADLIGHTS, REPLACEMENT SEALED BEAMS, BULBS



66-84184



66-84181

Mini 3.5" Headlamp

Part#	Description
66-84181	3.5" Plain headlamp/plain rim w/H4 bulb
66-84183	3.5" Plain headlamp/hooded rim w/H4 bulb
66-84184	3.5" Buffalo headlamp/hooded rim w/H bulb
66-84185	Plain rim only
66-84186	Hooded rim only
66-84182	3.5" light unit without bulb

Both headlamps are equipped with a
H4 12V 60/55W Bulb.



4-1/2" Headlamp Old Style Chopper Light

Old style 4.5" Chopper light with Hi-Lo beam indicator. Available with or without light units. All units have a high quality chrome body, rim and bulb socket/wires
66-84120 w/o Light
66-84121 with Light
48-65922 Repl. Bulb 12V 35W



4-1/2" Headlamp Standard Pear Shape

Available with or without light units. All units have a high quality chrome body, rim and bulb socket/wires
66-84122 with Light 12V
66-84123 without Light
66-84126 Rim only
48-65922 Repl. Bulb 12V 35W



4.5" Headlight with H4 60/55 Halogen Bulb

66-84127
Universal application
4.5" headlight,
bottom mount with
H4 60/55 watt
halogen bulb.
16" wire lead
and high beam
indicator



5-3/4" "Bates" Style Headlight

Available in side or bottom mount style.
Replacement H4 bulb:
48-67700
Side Mount:
without light unit
66-84100
with H4 60/55 watt
bulb/light unit
66-84101
Bottom Mount:
without light unit
66-84150
with H4 60/55 watt
bulb/light unit
66-84151
Replacement Quartz
light units:
5-3/4" light unit only...
no bulb 66-84160

Sealed Beams

2 styles and sizes. Flat or standard lenses.
7" (178mm) or 5 3/4" (146mm) sold each, with or without H4bulb. Available only from our Atlanta warehouse.



Type (Lenses)	7"	5 3/4"
Flat w/o bulb	66-75803	66-84130
*Flat W/H4 bulb	66-75804	66-84131
Standard W/O bulb	66-75805	66-84132
Standard W/H4 bulb	66-75806	66-84133

*Light Unit for use W/P43T H4 Bulb



66-84134
5 3/4" 12v 50/35 Watt
Made in USA

Replacement Sealed Beam Headlights

(Off Road Lighting)
Fit: EMGO Aftermarket
and oem housings



4 1/2" 114MM 35W clear Fluted lens	66-84173T
5 3/4" 146MM 12V 37.5/60W	66-84134T
7" 178MM 12V 75/75W	66-75810T



H4 Headlight Bulb

48-67702

H4 100/55W Halogen headlight
bulb with P43T type base.
Sold in boxes of 10.

Classic 7" Headlight Rim



66-65067

Replaces Triumph OEM: 05-01201
This is an exact replacement EMGO part for the classic Lucas headlight units used on most British motorcycles in the '60's and '70's.

66-65090



Replacement Parts For Classic 7" Lucas Replica Headlights Screw & Clip retaining (set) 10/bag. Replaces oem: 534296/144921



66-65091

Wire Clips for Classic 7" Lucas Replica Headlight Wire clips light unit to rim 10/bag replaces: 06-504665

Lucas Replica Headlight Shells

Lucas replica headlamps for BSA Triumph. Fits 1971-1972 BSA/Triumph twins and triples. Shell has 3 idiot light and one switch hole assembly. Replaces OEM 99-1221 Lucas# 60260



66-65071

Lucas replica headlamps for BSA Triumph. Fits 1969-1970 BSA/Triumph triples. Shell is plain with no holes. Replaces OEM 99-1029 Lucas# 54524009



66-65072

Lucas Replica Headlight Shells



TOP



TOP



TOP



TOP



BOTTOM



BOTTOM



BOTTOM



BOTTOM

66-65061

Fits: Triumph '60-'65
Replaces Triumph OEM: 99-9968
Replaces Lucas OEM:

66-65062

Fits: Triumph '68-'70
BSA A50/65 '68-'70
1 wiring hole
Rplcs. Tri. OEM: 99-9969
Replaces Lucas OEM: 54523508

66-65063

Fits: Tri. T100 '71-'74
Norton '71-'74
1 Wiring hole

66-65064

Fits: Triumph T160 '75, TR8, RV/T140 '79-UP, Norton Commando '75
3 Wiring hole
Replaces Triumph OEM: 99-7098
Replaces Lucas OEM: 54115106



Chrome

66-65066



Black

66-65068



Carbon

66-65069

For Universal application

66-65066 Chrome
66-65068 Black

66-65069 Carbon Fiber style w/ Chrome rim
Rplcs Lucas OEM: 54520774



BOTTOM



TOP

66-65060

Replaces Triumph oem: 99-7039 fits:
750 T140/TR7 '73-'77, T150 '73-'74, 3 Wiring hole.

LUCAS STYLE TAILLIGHTS, MOUNTING BRACKETS REPLACEMENT BULBS



Lucas Styled Taillights



62-21500



62-21522



62-14400



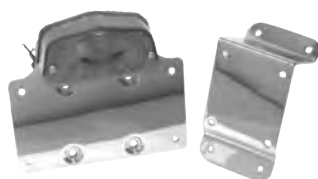
62-79800

LUCAS STYLE	COMPLETE UNIT	LENS ONLY
PRE '65 TYPE 12V	62-21500	62-21530
SMALL CUSTOM 12V	62-21522	62-21533
SMALL CUSTOM 6V	62-21526	62-21533
1965-'72 MODELS	62-14400	62-14430
1973 AND LATER	62-79800	62-79830

Taillight Mounting Brackets



62-21511



62-21550



62-21551



62-21521

EMGO#	DESCRIPTION
62-21510	MOUNTING BRACKET WITH PRE-'65 LUCAS STYLED TAILLIGHT
62-21511	MOUNTING BRACKET ONLY USES TAILLIGHT 62-21500
62-21550	PRE-'65 LUCAS STYLE, W/CHROME DIE CAST MOUNTING BRACKET
62-21551	PRE-'65 LUCAS STYLE W/CHROME DIE CAST SIDE MOUNTING BRACKET
62-21521	LUCAS-STYLE CUSTOM LIGHT W/MOUNTING BRACKET
	<i>NOTE: ALL ASSEMBLIES COME COMPLETE WITH MOUNTING HARDWARE AND RUBBER GASKET. USES TAILLIGHT 62-21522</i>

Replacement Bulbs

EMGO #	USA #	Stanley #	Description	Application
48-66606	1154	4813	6V 20/5CP Offset Pin	Taillight/stop
48-66612	1034	4828	12V 32/4CP Offset Pin	Taillight/stop
48-66806	1129	4513	6V 21CP (18 Watts)	Turn Signal
48-66812	1073	4527	12V 32CP (25 Watts)	Turn Signal
48-66406	-	62B	6V 3W	Intrument lights
48-66412	-	72A	12V 3W	Intrument lights
48-66512	-	-	12V 21/6CP Double Filament	Bullet/Marker light
48-66513	Amber Bulb	-	12V 21/6CP Double Filament	Bullet/Marker light
48-66712	-	-	12V Single filament	Bullet/Marker light
48-66723	-	-	12V 23W Single Filament	66-81900 series lights
48-66713	Amber Bulb	-	12V Single Filament	Bullet/Marker light
48-66724	Amber Bulb	-	12V 23W Single Filament	66-81900 series lights
48-65812	-	-	12V 45/45W	Headlight, for Honda ATV's
48-66912	Lucas# 303	-	12V 48/48W	Headlight, Right side traffic
48-66922	Lucas# 302	-	12V 48/48W	Headlight, Left side traffic
48-66932	Lucas# 360	-	12V 45/35W Hooded Filament	Headlight
48-65902	-	-	12V 25/25W	66-84125/28 series lights
48-65912	-	-	12V 35W	4.5" spotlights

Classic Round Taillights



Classic Taillight
Round 2-1/4" taillight. Available in black or chrome body w/ steel mounting bracket.

62-21512 Black
62-21514 Chrome
12V 23/3W bulb
(EMGO# 48-66512)

Custom Taillight Assembly

62-21624
High quality chrome plated aluminum, die cast mounting bracket cateye taillight (lens 5"x2 3/4") fender mount. Mounting bracket, rubber gasket and hardware included. Taillight only 62-21620



Atomic Taillight

62-21515
New Atomic Taillight
Viewable lens is 1 5/8" (48mm) in diameter. Utilizes a 12v 23/8w dual filament bulb providing brake and running light as well as license plate illumination. Includes mounting bracket/license plate bracket. Replacement bulb 48-66512



62-21507
Classic Vincent Style Taillight Brake light.



62-21508
Classic Styled. Lens is Jeweled

"Classic Style" Sparto replica Taillights available with projected lens and LED Available in Chrome, Polished and Black Powder Coat Finish.



62-30393 Black
62-30392 LED/Chrome
62-30390 Chrome
62-30391 Polished



62-30360 Chrome finish
62-30361 Polished finish
62-30363 Black Powdercoat



LED Taillight
62-30362

Case Quantity is 20 pieces

**CUSTOM TAILLIGHTS
LUCAS STYLE WINKERS
CUSTOM MARKER LIGHTS**



Retro Style Tombstone Taillights.
Available in Bulb and "Mini LED" Style



With Tag bracket
62-21614



Without Tag bracket
62-21616

LED Style

Chrome Box Light



62-30340
Chrome Plated
Old-School Box.
This was a staple of
the 60's and 70's
Dimensions: 4.250" wide
2.0" height
1.750" depth



Bulb Style
62-21600



62-21660
Custom Mini Retro Taillight
E-mark, 32mm between
mounting holes.
Overall length is 3.5".
Non-led



Cateye Taillights
Chrome die-cast body. 2
bolt mount clear bottom
lens lights up license
plate now available with
standard bulb or LED with
red lens.
62-21620 1157 bulb type
62-21622 LED light
62-21634 Red Lens only



60-19720

Triumph Winkers, Lucas Style

EMGO#	DESCRIPTION	REPLACES OEM
60-19710	LONG STEM WINKERS (5")	54057567
60-19720	SHORT STEM WINKERS(3")	54057553
60-19730	LENS ONLY	60600621

BMW Style Bar
End Deco Lights
60-14550 7/8"
60-14560 1"
NOW
AVAILABLE
FOR 1"
BARS



Mounts in the end
of 7/8" bars.
Sold as a pair.



Maltese Cross Taillight



62-30350
Maltese Cross
Taillight
62-30353
Red Lens only

**License Plate Skull
Krommets**



85-83438

Red LED eyes light up...
Great Looking! Per set of 2, in
Point of Sale slide pack

New Classic Styled Deco Lights

Classic Deco Styling comes in 2 styles lenses.
Available with Amber lenses with clear bulb,
or clear lens with amber light.

61-73117 Clear lens with amber bulb
61-73116 Amber lens with clear bulb

Please Note: Part numbers are sold as pairs



61-73117

61-73116

Slimline Bullet Light



A.

B.

Available in 2 styles, plain or "Buffalo".
Chrome Die-Cast body plus bulb or LED.
Comes with both red and amber lenses.

48-66512 Double filament bulb Size: 75mm x 30mm

Bulb Style	Description	LED Style
A 61-73190	Plain Slimline	61-73190L
B 61-73192	"Buffalo" Style Set	61-73192L

Extra Lens Sets

61-73191	Pair of Amber Lenses
61-73193	Pair of Red lenses

**Plain Slimline
LED Bullet Light**

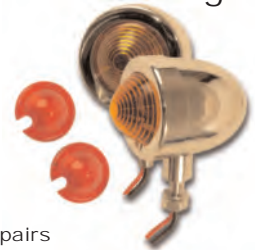


Both Sold as a pairs

61-73194L

Plain Slimline
LED Bullet Light
Stylish LED Light
comes with Amber
and Clear
interchangeable lenses.

**New Mini
Deco Lights**



61-73118 Chrome
61-73118B Black

New style is more
rounded.
Comes with amber
lenses and x-tra set of
red lenses

Bullet Lights

An excellent bolt-on custom lighting item.
All lights are chrome plated and are offered
with either 12 volt single filament bulb or 12
volt dual filament bulb.

<u>Description</u>	<u>Red Lens</u>	<u>Amber Lens</u>
<u>Repl. Bulb</u> 12V Single Filament 48-66712	61-73101	61-73151
12V Dual Filament 48-66512	61-73103	61-73153
<u>Replacement Lens Only:</u>		
Red 61-73130	Green 61-73133	
Amber 61-73131	Clear 61-73134	
Blue 61-73132	Pink 61-73137	



EMGO Mark II Lights

Die-Cast and chrome
plated. A hooded lens
opening and wedge shape
make the Mark II stand out
from other lights. Each light
has special point of sale
display packaging that
allows the customer
to view the Mark II light
from all angles.

Replacement Bulbs:
Single: 48-66712
Double: 48-66512



Queen Lights

Die-Cast and chrome
plated. Each light has
special point of sale
display packaging that
allows the customer to
view the Mark II Queen
light from all angles.

Replacement Bulb: 48-66412

<u>Description</u>	<u>Red Lens</u>	<u>Amber Lens</u>
12V Single Filament Lens Only	61-97010 61-97030	61-97020 61-97031



<u>Description</u>	<u>Red Lens</u>	<u>Amber Lens</u>
12V Single Filament Lens Only	61-99100 61-89530	61-99110 61-89531
12V Double Filament Lens Only	61-99120	61-99140

**COILS, STATORS, ROTORS,
CONDENSERS, H.T. PICK UPS
DISTRIBUTOR CAP**



Ignition Coils, Bracket,



6-Volt Coil

24-72454

6-Volt dual lead coil. This coil is the same as our 24-72451 (12 Volt) except it is a 6-volt rather than 12 volt coil. The HT leads (spark plug wires) are 590mm (23 1/2") long and the mounting bolts are 90mm (3 9/16") apart center to center. Primary resistance 1.09 ohms. Secondary resistance 13-14 ohms
 NOTE: This coil is not an oem fitment/replica. One potential use is when an old British twin is converted from points ignition to electronic ignition and dual plugged.



Lucas Replica Coils
 EMGO# LUCAS#
 24-71516 6V 47275
 24-71522 12V 47276
 (SAME DIAMETER AS ORIGINAL)



Villers Coil
 24-71530 Villers short coil
 (1-5/8", 42mm long, 1-5/16" diameter)
 24-71531 Villers long coil
 (2", 51mm long, 1-3/8" diameter)



Coil Bracket for Classic British
 24-71518
 Replaces Lucas #54419974 and Triumph 70-6389
 Includes nuts, bolts and washers

Rotor Stator Unit



EMGO#	DESCRIPTION
48-98650 STATOR	REPLACES LUCAS# 47205 SINGLE PHASE, HIGHER OUTPUT THAN OEM.
48-98651 STATOR	16 AMP HI-OUTPUT LUCAS TYPE STATOR SINGLE PHASE 16 AMP, 2 LEAD UP TO 200W OUTPUT
48-98652 ROTOR	REPLACES LUCAS# 54202298

(NOTE: STATOR AND ROTOR AVAILABLE ONLY IN NORTH AMERICAN MARKETS. ALL OTHERS AREAS CONTACT :WASSELL UK.)

H.T. Pick-Ups



EMGO#	DESCRIPTION
48-98661	REPLACES LUCAS# 459190 CLIP ON TYPE TO FIT LUCAS K1F AND K2F MAGNETOS FITS RIGHT OR LEFT. EACH COMPLETE WITH GASKET IN A POLYBAG. FITS NORTON ATLAS, BSA, ETC.
48-98662	REPLACES LUCAS# 458876 SCREW ON TYPE TO FIT LUCAS K2F/C MAGNETOS. FITS RIGHT OR LEFT. EACH COMPLETE WITH GASKET IN A POLYBAG. FITS TRIUMPH TWINS, ETC
48-98663	REPLACES LUCAS# 463066 SCREW ON TYPE TO FIT LUCAS MAG/DYNAMOS KNI, KNV, N1 & N2. FITS ALL SINGLES.

Distributor Cap, Spark Plug Wires



**48-98660
Lucas Replica
Distributor Cap**

Replaces Lucas# 425049
 Fits 1960-1962 Triumph 6T
 Thunderbirds and 1957-up 3TA/5TA



28-47826

Spark Plug Wire
 26" with non resistor cap
 28-47826
 7mm Black Rubber
 Copper Core
 Spark Plug wire, terminated
 with a 90 degree non resistor
 waterproof Spark Plug Cap

28-47830
 100' Roll Black Rubber 7mm copper core wire



FUSE HOLDERS, SPEEDO GEARBOXES,
SPEEDOS, TACHS,
HORNS, TAX DISC HOLDERS



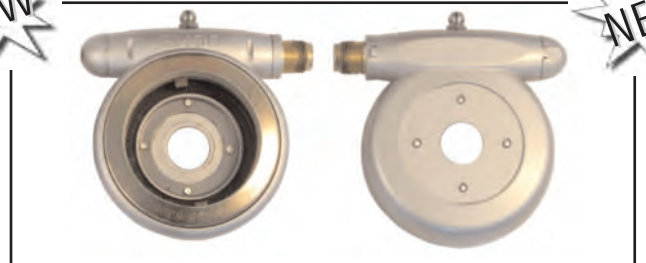
6V/12V Horns

86-18352
Black 12V
86-18356
Black 6V
New Black Horns
Available in
6V and 12V,
70mm Diameter

86-18162
Universal 12V, 70mm
Manufactured from
corrosion resistant
high quality
stainless steel.
Classic styling and
LOUD!

More Horns are available in the Electrical section
in the 2013 Filter/Mirror catalog available online at
www.emgo.com

Smiths Replica Speedometer
Gearboxes



EMGO#	MAKE / MODEL	YEARS	RATIO	HOLE	SMITHS # OEM #
58-83950	AJS/ Matchless heavy weight singles and twins BSA C15/B25/B44 Norton Dominator/ES2 Tri. 3TA/5TA/T100C/T100R Tri. T120	1965 - 1970 1964 - 1974 1964 - 1965	2:1	3/4"	BG5330/287 99-9976 19-9205
58-83951	BSA Rocket III/A65 Tri. T120/TR6 Tri. T140 Tri. T150	1971 - 1972 1971 - 1972 1973 - 1978 1972 - 1974	1.25:1	5/8"	BG5330/164 60-3213 60-7091 99-9990
58-83952	BSA A65 T Bolt/Lightning Norton Commando 750/850	1967 - 1970 1969 - 1974	15:12	11/16"	BG5330/171 19-2225 06-0627 99-9994
58-83953	BSA A75 Rocket III Triumph T120/T6R T150	1967 - 1970 1966 - 1970 1968 - 1970	15:12	3/4"	BG5330/168 19-9217 60-0637 60-0637

48-93320
Universal in-line fuse
holder for
tube type fuses.
Includes 16 gauge
wire and a 20 amp fuse.
Overall length 12"



Tax Disc
License Holders
86-28820
Round "Classic" style
with chrome finish.
Stainless steel front ring
with chrome plating backing.



Round 'Sport'
style with
aluminum
anodized ring.



Hexagonal 'Sport'
style with
aluminum
anodized ring.

ROUND SPORT	DESCRIPTION	HEX SPORT
86-28811	BLACK	86-28831
86-28812	SILVER	86-28832
86-28813	BLUE	86-28833
86-28814	RED	86-28834
86-28815	GOLD	86-28835
86-28816	PURPLE	86-28836
N/A	CARBON	86-28838
86-28819	GREEN	86-28839

Speedo
-n-
Tachs



58-43633
Grey Face Speedo



58-43634
Black Face Speedo



58-43635
Grey Face Tach



58-43636
Black Face Tach

Classic British.... Smith style speedo
and tachometers.
Grey Face units: Triumph 650 models '67-'69
Black Face units: Triumph 650/750 '70-'78



NEW BSA 3:1 TACHOMETER
58-43640 3:1 Black face Smiths
replica tachometer
58-43641 3:1 Grey face Smiths
replica tachometer



43-99791 (Page 14)
Rubber Cover for Triumph Speedo and Tach
Fits Twins and Triples
Replaces Triumph oem: 60-2600

CLUTCH CABLES



CLUTCH CABLES	YEAR	OEM	DETAILS/LENGTH	EMGO#
BSA				
B40	60-64			26-57183
A50/65	62-64			26-57184
SS80, SS90,	61-64			26-57185
SS80, SS90	65			26-57186
C15, B40	65			26-57187
C15/SS	65-67			26-57188
C25 Barracuda	66-67			26-57189
A65H/S	66-67			26-57190
A65 Spitfire Firebird	68			
D10 Bantam	66-67			26-57191
D14/4	68-69			
D175				
A65F/L	69		+5"	26-57192A
A65L/S/T, A70	70-73			26-57193
A50	70			
Bantam D1,D3	50-63	90-8510	41"	26-82733
Deluxe Bantam	65-66	90-8603	39"	26-82736
Super Bantam D7	58-65	90-8565	41"	26-82737
B25, C25	68	40-8615	48"	26-82738
B31/2/3/4	59-60			
B44	65-68			
A7	58-61			
A10	58-64			
B40 Standard	60-64	40-8512	53"	26-82734
C15 Standard	58-63			
B31,B32,B33,B34	49-58	67-8681	48"	26-82732
A7	56-58			
A10 Standard	55-58			
A50/A65 Non Alloy Lever Models	63-68	68-8611		26-82855
A50/A65	1969	60-2080		26-82880
A65S Spitfire	68 on	60-3077		26-82881
A65F Firebird	70-72		6" longer	26-82881A
NORTON				
Electra ES400	63-65	63-65		26-57194
Navigator	64-65			26-57195
650S/S	66			26-57196
Atlas	65-67			
650/99, NC15CS	66-67			26-57197
P11/A	67-68			26-57198
Commando Roadster Int. (US)	70-73	062492	52"	26-82708
As 26-82708 except 6" longer				26-82708A
Commando Interstate (UK)	68-70	060930	45"	26-82730
Model 50	56-64	19828	54"	26-82731
ES2	56-64			
Dominator 77, 88	57-64			
Model 19S	56-64			
Dominator 99	61-63			
TRIUMPH				
T20 Cub	59-64		Small Barrel	26-57199
TR25W	1968	60-0966	48"	26-82738
T100C	69-71	60-1994	47"	26-82701
T100R	69-73	60-0565	with barrel nipple	
TR5T	73			
6T,TR6S,T120,R/T	65-67			
The same as 26-82701 except 6" longer				26-82701A



CLUTCH CABLES BRAKE CABLES

CLUTCH CABLES	YEAR	OEM	DETAILS/LENGTH	EMGO#
TRIUMPH				
6T, TR6S, T120, R/T	63-64	60-0466	w/pear shaped nipple 47"	26-82735
650/750	68-74			26-82700 use 26-82703
T20 CUB	65-68		Large Barrel	26-34210
T20 Sport	59-64		With adjustor	26-34211
T20 Sport	65-67		Less adjustor	26-34212
3TA, 5TA, T90, T100/S	62-64			26-34213
T100C Trophy	68-71	60-1994	U.K. spec. 47 1/2"	26-34214
T100T Daytona	69-74			
TR5T Trophy Trail	1975			
6T/TR6	1965	60-0565		
TR6SS	66-67			
T120	65-67			
T100C/R, T120	65-68		Barrel Nipple	26-34215
T150V Trident	71-75			26-34216
TR7/T140	73-up	60-4168	U.K. spec. 45"	26-82704
			Same as 26-82704 But +6"	26-82704A
			Same as 26-82704 But +12"	26-82704C
TR6,C,R,SS	68-73	60-0667	46"	26-82706
T120,R,TT	68-73	60-1993		
		60-3079		
T21,3TA	57-61	60-0366	46"	26-82707
5TA	57-61			
T100A	57-63			
TR65 US spec Thunderbird	82	60-3925	51"	26-82709
TR7 US spec	73-79			
TR7T Tiger Trail	82			
T140	73-82			
BRAKE CABLES				
BSA				
Bantam D1,D3	59-62	90-8520	shackle end	26-82747
D1, D3 Bantam	59-60		F. Brake	26-57160
SS90	62-66		F. Brake (7" Brake)	26-57161
A50	62-64			
A50C/R/V, A65H/L/S/T, A70	64-68		F.Brake	26-57162
B40	60-64		F.Brake	26-57163
B40	65-66		F.Brake	26-57164
A65R	64-65		F.Brake (8" Brake)	26-57165
A65H/S2	67		F.Brake	26-57166
A65L	68		F.Brake	26-57167
B44 Victor	67		F.Brake (8" Brake)	26-57168
B44 Shooting Star	68		F.Brake (8" Full Width)	26-57169
C25, B25	68		F.Brake (7" Full Width)	26-57170
Bantam 4S	68		F.Brake	26-57171
D175	69-71			
B50MX	71-73		F.Brake	26-57172
D7 Super Bantam	59-60	90-8553	32"	26-82778
D7 Super Bantam	61-65	90-8585	33"	26-82764
Bantam Bushman	66-67	90-8586	33"	26-82775
B25SS Goldstar	71	60-3075	41" with brake light switch	26-82771
B50SS	71-72			
C15	61-63	40-8598	33"	26-82769
B31,32,33,34	56-57	42-8670	ball nipple 33"	26-82765
B31,32,33,34	58	42-8726	33"	26-82766
B31,32,33,34	59	42-8738	clevis end 33"	26-82777
B31,32,33,34	60	42-8793	clevis end/adjuster 33"	26-82767

BRAKE CABLES,



BRAKE CABLES	YEAR	OEM	DETAILS/LENGTH	EMGO#
BSA				
A7	58	42-8726	33"	26-82766
A7	59	42-8738	clevis end 33"	26-82777
A7	60	42-8793	clevis end/adjuster 33"	26-82767
A10 Standard	55-57	67-8610	34"	26-82748
A10	60	42-8771	clevis end 33"	26-82772
A10 8" brake	61-62	42-8774	33"	26-82760
A7, A10	57-62		W/Full Width Hub	26-34222
A50 Royal Star	70	60-2077	U.K.spec. 31"	26-82770
A65L Lightning	69-70			
A65F Firebird	71	60-3557	41"	26-82771
A65L Lightning	71-72			
A75 Rocket III	71-72			
The same as 26-82771 except 6 inches longer				26-82771A
A65 Lightning/Thunderbolt	68	60-0664 +6"	43"	26-82871A
NORTON				
Commando (rear)	68-74	06-0482		26-82840
Singles, twins	56-64	20295	large nipple 33"	26-82779
Jubilee Twin	60-66		F.Brake	26-57173
ES400	63-65		F.Brake	26-57174
650	66			
P11/A	67-68			
Commando, Roadster, F/Back	68-70		F.Brake	26-57175
TRIUMPH				
T100T Daytona	69-74	60-2077	U.K. spec. 31"	26-82770
T100C Trophy	68-71			
TR6C	69-70			
T120R, T120TT	69-on			
T120	69-70			
T100T, R Daytona	1968			
6T, TR6	1965	60-0558		26-82870
T120	65-67			
3TA, 5TA, T100A	59-64		F.Brake	26-57176
T20 Cub	63-64		F.Brake	26-57177
T90, T100S/S	61-64		F.Brake	26-57178
T90, T100S/S/T	65-68		F.Brake	26-57179
6T, TR6S/S, T120	65-67		F.Brake	26-57180
R5T Trophy Trail	73		F.Brake	26-57182
R5T Trophy Trail (USA)	73		F. Brake	26-57182A
TR6SS/T120R, T	1968	60-0664	U.K. spec. 43 1/4" (outer)	26-57181
TR6SS/T120R, T	1968	60-0664 +6"	as above +6"	26-82871A
T25SS	71	60-3075	U.K. spec. 41"	26-82771
The same as 26-82771 except 6" longer				26-82771A
T20 Sports	60-64	60-0429	33" with pear nipple	26-82774
T90, T100SS, T110T	65-68	60-0560	36" large nipple	26-82773
3TA, 5TA	65-66	60-0561	32" large barrel	26-82776
6T	59-61	60-0414	36" pear nipple	26-82768
T110T	65-68	60-0560	36" large barrel	26-82773
T120 Bonneville	71-72	60-3557	41" with brake light switch	26-82771
TR6 Trophy				
T150 Trident				
T150 Trident	69-70	60-2076	36" with brake light switch	26-82761
T100	69-73			
T120/TR6	69-70			
BSA A65	69-70			
BSA A50	70			
BSA A75 Rocket III	69-70			



THROTTLE CABLES

THROTTLE CABLES	YEAR	OEM	DETAILS/LENGTH	EMGO#
BSA				
D1, D3 Bantam	59-82		Drum Nipple	26-57117
D1, D3 Bantam	59-82		Barrel Nipple	26-57118
Bantam D1,D3	61-62	90-8520	Shackle end	26-82747
B31, B32, B33, B34, M33	57-up			26-57119
B40	65-66			26-57120
A7	58-62			
A10	58-62			26-57121
A50/65	61-65			26-57122
A50C/65L	64-65		Long	26-57123
A50R	65-67			26-57124
C15 STD	58-67			26-57125
SS80	61-65			26-57126
C15S/S	65-67			
SS90	65-66			26-57127
A65S	65-66			26-57128
A65R Rocket	64-65			26-57129
A65H	68			26-57130
A65T	68-up			26-57131
B44 Victor	65-66			26-57132
A65T	65-67			
Spitfire 3 & A65F	67-69			26-57133
D7	58-65			26-57134
A65L	64-65		Short	26-57135
A75 Rocket 3	69			26-57138
B25/SS/T	68-71			26-57136
BSA D175	69-71			26-57137
B31,32,33,34	49-55	67-8610	34"	26-82748
M20,21				
A7	56-57	67-8521	37"	26-82742
A10	55-57			
NORTON				
50	88/99			26-57139
Twin	59-63			
Commando, Roadster	71-73			26-57141
88SS/99SS, 650S	61-66		long	26-57140
88SS	61-66			26-57135
N15CS	67-68	03-3145	short th/air 2 needed	26-82746
P11/P11A	67-68		short th/air 2 needed	
Commando	68-73		short th/air 2 needed	
Commando	70-73	06-1451	long throttle/air cable	26-82854
Jubilee	60-66			26-57134
TRIUMPH				
5T, T100/110, 6T	50-61			26-57142
3TA, 5TA	63-66			26-57144
5T, 6T, T110, TR6S	68			26-57145
T120	58-61			26-57146
Bantam Cub	66-67			26-57147
T100T	67		short	26-57148
T120	59-67			
T100T	68-up		short	26-57149
T90/100ss	68			26-57150
T90/100SS	68-up			26-57151
T100R	68			26-57152
T100R/120R/TT	67			26-57154
T100T	67		long	26-57155

THROTTLE CABLES AIR CONTROL, (CHOKE) CABLES,



THROTTLE CABLES	YEAR	OEM	DETAILS/LENGTH	EMGO#
TRIUMPH				
T120R	64-73			
T120R/TT	68-up			26-57156
T140V	73-76			
T160V Trident (USA)	75-up			26-57157A
TR7RV Tiger (UK)	78			26-57158
TR7RV Tiger (USA)	78			26-57158A
T140V Bonneville (UK)	79			26-57159
Super Cub	67-68			26-57137
T150	69-up			26-57138
T120R/TT	68-UP	60-1819	43"	26-82740
T140 (US) Dual cable	73-76			
T140	79-82	60-7149	long th cable	26-82744
T140	79-82	60-7084	short th. 2 needed	26-82745
TR7 US spec	73-77	60-1806	43"	26-82749
T120	68-73	60-0733	short th/air 2 needed	26-82852
T140 US spec.	77-78		short th/air 2 needed	
T100T Daytona	67	60-0500	long thr./air cable	26-82853
T120	65-67		long throttle	
T120	68-73		long thr./air cable	
T140 US spec.	77-78	60-7001	long thr./air cable	26-82856
5TA/T100A	57-63	60-0383		26-57143
Trophy			26-57136	
UNIVERSAL THROTTLE CABLES				
Cable Univ.			54"	26-82743
No 16 Type Twist grip			Junction Box W/Adjustor, 12"	26-34226
No. 366 Type Twist grip			Junction Box W/Adjustor, 23"	26-34227
Air Amal 375 Monobloc			622, 624, Concentric	26-34228
Air Amal 376 Monobloc			33"	26-34229
Air Amal 389 Monobloc			33"	26-34230
No. 16 Twist grip			Throttle 375 Monobloc, 36"	26-34231
No. 313 Twist grip			Throttle 375 Monobloc, 36"	26-34232
No. 16 Twist grip			Throttle 375 Monobloc, 37"	26-34233
No. 366 Twist grip			Throttle 375 Monobloc, 37"	26-34234
No. 16 Twist grip			Throttle 376 Monobloc, 37"	26-34235
No. 313 Twist grip			Throttle 376 Monobloc, 36"	26-34236
No. 16 Twist grip			Throttle 389 Monobloc 36"	26-34237
No. 313 Twist grip			Throttle 389 Monobloc 36"	26-34238
No. 313 Twist grip			Throttle 389 w/Adjustor, 36"	26-34239
Universal Throttle			622-626 Concentric	26-34240
No. 366 Twist grip			622-626 Concentric	26-34241
No. 313 Twist grip			622-626 Concentric	26-34242
No. 16 Twist grip			928-932 Concentric	26-34243
No. 366 Twist grip			928-932 Concentric	26-34244
No. 313 Twist grip			928-932 Concentric	26-34245
No. 16 Twist grip			928-932 Concentric	26-34256
AIR CONTROL (CHOKE) CABLES				
Universal air control (choke) cable		Amal	34"	26-82780
Concentric 622,624,626 w/mid adjuster				
BSA				
M20/M21	46-59		Air Control	26-57100
A50/65/65T	61-67		Air Control	26-57101
A50R	65-70		Air Control	26-57102
A65T	68-72		Air Control	26-57103
D14/4 Bantam	68-69		Air Control	26-57104
NORTON				
Jubilee Twin	58-60		Air Control	26-57105
Atlas			Air Control	26-57106



AIR CONTROL, (CHOKE) CABLES, SPEEDO CABLES

AIR CONTROL (CHOKE) CABLES	YEAR	OEM	DETAILS/LENGTH	EMGO#
TRIUMPH				
TR6S/S	68		Air Control	26-57107
TR6C/R	71-73			
T90, T100S/S	68-up		Air Control	26-57108
T100C	71			
T100R/T	68-73		Air Control (Short)	26-57109
T120/RV/TT	68-73		Air Control (Short)	26-57110
T150	69-70		Air Control (Right)	26-57111
T150	69-70		Air Control (Center)	26-57112
T150	69-70		Air Control (Left)	26-57113
T150	71-72		Air Control	26-57114
T150V	73-74			
TR7RV Tiger	73-79		Air Control	26-57115
T140V	73-81		Air Control (Short)	26-57116
TRI.		60-0684		26-82851
SPEEDO CABLES				
BSA				
B44 Victor Enduro	68-up		66"	26-82710
B32,33 swing arm	54-57	53395	3'10 3/4"	26-82712
B32	62-			
B34	54-55 57-			
A7 swing arm	54-62			
A10 swing arm	54-63			
Bantam D7	63-66		4'10 1/2"	26-82713
Bantam D10	66-68			
Bantam D14	68-71			
C15Sports Star	63-			
C15 Sports	63-			
C15 SS80	64-			
B40	63-65			
A75 Rocket III	71-on			26-82714
Bantam D1,D3 rigid + plunger	49-57	53395/3	4'8"	26-82717
Bantam D5,D7	59-62			
C10L	54-55			
C15	59-65			
B31	54-55			
B40	61-62			
M33	54-57			
M20	54-57			
B33 Rigid & plunger	54-55			
M21	54-57			
B31 swing arm	58-59		3'8"	26-82718
B33 swing arm	58-60			
A50	62-			
A10	58-59			
A10 Super Rocket with cowl	59-61			
A10 Road Rocket with cowl	62-63			
A10 Golden Flash	62-63			
A65	62-63			
B25 Starfire	67-70		5'3"	26-82719
B25SS Goldstar	71-			
B25T Victor Trail	71-			
B44 Victor Roadster	68-			
B44Shooting Star	68 on			
B44 Victor Enduro	68 on		66"	26-82710

SPEEDO CABLES TACHOMETER CABLES



SPEEDO CABLES	YEAR	OEM	DETAILS/LENGTH	EMGO#
<i>NORTON</i>				
Commando 750/850	69-on		5'9"	26-82716
Manxman 650	64-on			
Atlas	64-67			
N15,N15CS	66-67			
Dominator 99	64-67			
Dominator 88SS	64			
As above but +2"			5'11"	26-82716A
<i>TRIUMPH</i>				
TR6C,R T120	71-73		66"	26-82710
T140, TR7	73-78			
T140,TR7	79-on		5'11" Veglia gauges	26-82711
T20 Tiger Cub	57-62	53395	4'10"	26-82715
T21,3TA	57-63			
Tiger 90	63-on			
5TA	59-63			
T100A	60-62			
T100SS, T100SC	63-on			
T20 Tiger Cub	63-66		4'10"	26-82720
T20 Bantam Cub	67-on			
3TA	64-66			
Tiger 90	64-66			
5TA	64-66			
T100SS,T100SC	64-66			
T100T Daytona	66-67			
T160 Trident	1975		5'11"	26-82716A
TR25W	69 On		5'3"	26-82719
TR25T + TR25SS	71 On			
TACHOMETER CABLES				
<i>BSA</i>				
C25 Barracuda	66-67		2'9"	26-82751
B44 Victor Enduro	66-68			
B44 Victor Roadster	68-on			
A50 Wasp & Royal Star	66-on			
A65L/T Lightning/Thunderbolt	64-on			
A65 Spitfire/Hornet	65-on			
A65 Firebird	68-on			
A75 Rocket III	71		2'4"	26-82754
<i>NORTON</i>				
750/850 Commando	68-75		30"	26-82750
Commando	69+			26-82753
<i>TRIUMPH</i>				
T120,TR6C/R	71-UP		30"	26-82750
T140,TR7	73-78			
T160	75			
T100	66-73		2'4"	26-82754
TR6/T120	66-70			
T150 Trident	71-73			

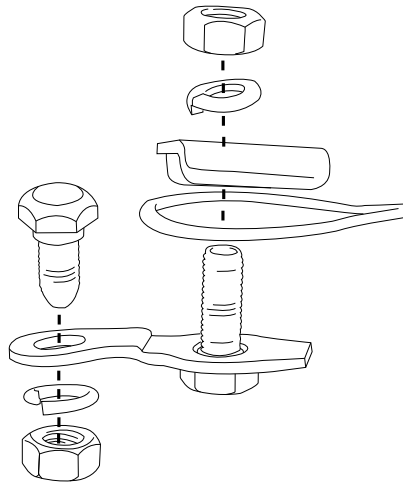


EXHAUST LIFTER CABLES
MAGNETO ADVANCE CABLES
CABLE CLAMPS, CABLE ADJUSTERS

EXHAUST LIFTER CABLES	YEAR	OEM	DETAILS/LENGTH	EMGO#
BSA				
BSA III	48-58		All Side Valve	26-34217
BSA O.H.V.	48-59		All O.H.V. Models	26-34218
All Bantam	50-62			26-34219
C15	60-62			26-34220
B40, SS90	60-64			
NORTON				
ES2, 50, 19S,	57-62			26-34221
MAGNETO ADVANCE CABLES	YEAR	OEM	DETAILS/LENGTH	EMGO#
BSA				
Standard Touring Models	46-62		39"	26-34223
TRIUMPH				
Triumph Touring Models	50-60		41"	26-34224

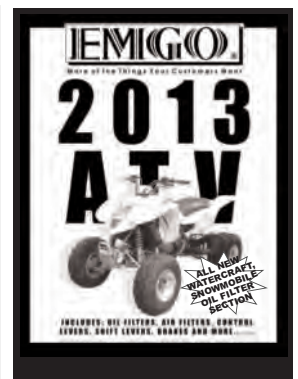
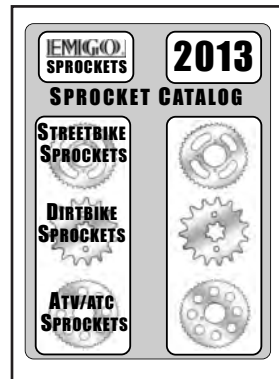


26-81150
Universal Cable
Clamp
Brake and clutch cable
clamp fits at booster
brackets and at front
brake, for B.S.A. Triumph,
Norton and universal



34-67015
Adjuster & Adjuster
Lock Thumb nut.

Replaces oem:
07-181708 &
07-181709
Sold per set



GIVE YOURSELF THE **EMIGO** ADVANTAGE!

www.emgo.com. has been updated with our latest catalogs and new product information available to download.

Go to www.emgo.com

CLASSIC REPRODUCTION CONTROLS



Console Switch Levers



30-69664 Clutch 30-69663 Brake

Fits: BSA A65T/L '71-'72
Certain B25/50 models

BSA A65/A75 '71-'72, 500 '71-'74, TR25 '71 Up,
Norton Commando front drum brake models '71-'73,
Norton Commando '71-'74, Trident '71-'72, Triumph
250/500/650 Trident '71-'74, Triumph 650 '71-'72,

Replaces OEM: Tri. 60-2627, 60-2628
Norton 062702, 062553



32-69632 Clutch 32-69631 Brake

Ball end blade, cable adjuster
with mirror hole as used on most
Triumphs after '63 for 7/8 bars

Tommaselli Reproduction assemblies



32-73760 Pair R/L Levers Only
32-73761 RH Brake 30-73763 Brake
32-73762 LH Clutch 30-73764 Clutch



32-69642 Clutch
32-69641 Brake
Z107P Type, open blade 7/8"

Doherty Replica Lever Assemblies



32-69680 Pair
32-69682 Clutch 32-69681 Brake
Doherty replica clutch and
brake assemblies for classic applications



32-69652 Clutch
32-69651 Brake
Amal style, Die Cast with
cable adjuster for 7/8" bars.

British Style Lever Assemblies



32-69644 Clutch 32-69643 Brake
Chrome stamped steel clutch and brake lever assem-
blies for 1" handlebars without cable adjusters.



32-64408
7/8"
Decompressor
lever with
flat end



32-64400
Universal Chrome
Plated Compression
Release Lever
Assembly



32-69612 Clutch 32-69611 Brake
Chromed steel ball end control lever assembly
with anti-rock pad and cable adjuster for 7/8" bars



32-64458
Doherty type 217 clamp for 1" bars.
Triumph oe# 97-06687

Chrome Plated brass perches with steel levers.



32-64452
Ball end clutch lever for
1" handlebar with
cam adjuster
Doherty type 217 replica



32-64451
Ball end brake lever for 1"
handlebar with
cam adjuster
Doherty type 217 replica



32-64454
Ball end clutch lever for 1"
handlebar with cam
adjustor and switch
mount clamp
Doherty type 217 replica
Same as 32-64452 but with clamp 32-64458



32-64462
Ball end clutch lever for
7/8" handlebar with
cam adjuster
Doherty type 219 replica



32-64461
Ball end brake lever for
7/8" handlebar with
cam adjuster
Doherty type 219 replica



32-69661
1" non ball end brake/air
lever assembly
Doherty type 100/200 replica



32-69692
7/8" non ball end
clutch/mag lever assembly



32-69691
7/8" non ball end
brake/air lever assembly



32-69662
1" non ball end clutch/mag
lever assembly
Doherty type 100/200 replica



32-69693
7/8" ball end
brake/air lever
assembly with cam
adjuster



32-69694
7/8" ball end
clutch/mag lever
assembly with cam
adjuster



32-69633
Brake/air lever control
assembly with ball
end lever and cable adjuster.

AIR/MAGNETO CONTROL ASSEMBLIES

DESCRIPTION	LEFT	RIGHT
BALL END STYLE 7/8"	32-69620	32-69621
FLAT END STYLE 7/8"	32-69622	32-69623
1"	32-69624	32-69625



32-69621



32-69622

PLEASE NOTE WE HAVE MANY HANDLEBAR BENDS IN BOTH 7/8" AND 1" DIAMETER. FOR MORE DETAILS SEE OUR 2013 CONTROL CATALOG



New Triumph Handlebars



23-93170

Triumph 90/100 handlebars.

Width 24 1/4", Center Width 3.1/4", Pull Back 4 1/2".

Triumph oem# 97-1872

British Handlebars

PART #	OEM #	MAKE	MODEL
23-93100	97-1870	TRIUMPH	U.S. spec. T120 / TR6 1966 - 1970
23-93101	97-4583	TRIUMPH	97-4583
23-93102	65-4960	BSA	A, B & M group standard touring bar,
23-93102	02-1257	AJS / MATCHLESS	Standard Touring Bar
23-93103	97-7001	TRIUMPH	650 / 750 1971 and up
23-93104	06 1046	NORTON	Commando Roadster / Fastback 1968 - 1975
23-93105	6400/56	ARIEL	All heavyweight models 56 - 59
23-93106	97-0811	TRIUMPH	U.K. SPEC T120
23-93107	40-4956	BSA	C15 / B40 with welded on lever lugs
23-93108	97-1197	TRIUMPH	U.S. spec. T120 TR6 pre unit, 1" w r/h end reduced to 15/16"
23-93109	06 4132	NORTON	U.K. / European spec. Commando Interstate
23-93111	NM72460 / 06 7803	NORTON	Flat, Domi 99, Atlas
23-93111	HB1/C	VINCENT	Flat bar for singles and twins 1946 and on
23-93112	40-4976	BSA	C15 / B40 without welded on lever lugs
23-93113	97-4252	BSA	U.S. spec. A75 Rocket III 1969 - 1971
23-93114	97-1131	TRIUMPH	3TA/5TA/T100 nacelle models, 1"w/ r/h end reduced to 15/16"
23-93115	90-0934	TRIUMPH	Tiger Cub with welded on lever lugs
23-93116	42-4968	BSA	A10 / A50 / A65 western 42-4968
23-93117	90-4978	BSA	BANTAM with welded on lever lugs
23-93118	90-4992	BSA	BANTAM D7/D10/D14 without welded on lever lugs
23-93119	42-4968	BSA	U.S. spec. mid 1950's to 1970
23-93170	97-18723	TRIUMPH	T90/100

7/8" And 1" Clip-Ons In Black Or Chrome



7/8" Diameter

41mm Chrome 23-93139
 36mm Chrome 23-93135
 35mm Chrome 23-93121
 34mm Chrome 23-93123
 33mm Chrome 23-93131

41mm Gloss Black 23-93140
 36mm Gloss Black 23-93136
 35mm Gloss Black 23-93122
 34mm Gloss Black 23-93124
 33mm Gloss Black 23-93132

1" Diameter

39mm Chrome w/Dimple 07-93137
 41mm Chrome 23-93143

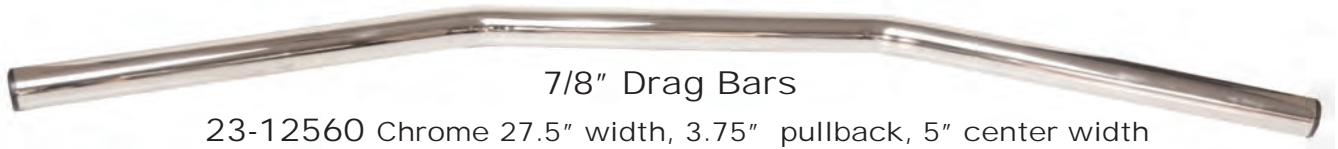
39mm Gloss Black w/Dimple 07-93138
 41mm Gloss Black 23-93144



Triumph Handlebar Mount Rubber
 23-93120

Replaces oem: 97-1580

Fits: All 1963 and later models except C models



7/8" Drag Bars

23-12560 Chrome 27.5" width, 3.75" pullback, 5" center width

23-12570 Black

23-92402 Chrome 27.5" width, 3" pullback, 8.5" center width

23-92412 Black

23-93134 Chrome 30" width 11.5" center, 3" pullback

Clubman Bars Available in 1" or 7/8"
Chrome and Black

7/8" Diameter

23-12538 Chrome 23-12539 Black

1" Diameter

23-12558 Chrome 23-12559 Black



Clubman Bars



23-92406

Drag T-Bars

27.5" wide 6" rise



23-12566 "7/8

07-12567 "1

Broomstick Bars

Dead Straight 32" Chromed Tube



23-92400

Chrome Dirtbike bars

31.250" wide, 5.5" rise, 5" pullback



Dirt Track Type Bars

23-12565 Chrome 23-12575 Black

23-12581 Chrome 23-12591 Black (#10)

23-12582 Chrome 23-12592 Black (#24)

Ape Hangers Available in 1" and 7/8"
Available in chrome and Black Satin finish

For Black Satin finish add a "B" to the part number.

32" Wide at the grips with a 6" width at the triple clamps. They are plain not dimpled.

1" Diameter

Height

12"

14"

16"

18"

Emgo #

07-12504

07-12505

07-12506

07-12507

7/8" Diameter

Height

12"

14"

16"

18"

Emgo #

23-12534

23-12535

23-12536

23-12537



Case Quantity is 10

RISERS, THROTTLE ASSEMBLIES



23-09620
Risers for
1" Handlebars



2" tall risers for 1" handlebars



Short Risers for 1" Handlebars
Available in Chrome or Gloss Black

23-09701 Chrome Risers
23-09702 Gloss Black



Amal Style Throttle

44-29490 replaces Tri. 60-7014

This die-cast "Amal 364" style throttle fits right in with the classic reproduction look

Triumph Throttle Assemblies

7/8" & 1" Throttle

44-29470 CHROME SINGLE CABLE THROTTLE ASSEMBLY.

THROTTLE ONLY. FITS 7/8" BARS

44-29472 CHROME UNIVERSAL THROTTLE w/ TENSION ADJUSTER

THROTTLE ONLY. FITS 1" BARS

44-29474 CHROME DUAL CABLE THROTTLE ASSEMBLY.

THROTTLE ONLY. FITS 7/8" BARS

44-29480 CHROME SINGLE CABLE THROTTLE ASSEMBLY.

COMES WITH BOTH JACK HAMMER GRIPS. FITS 7/8" BARS

44-29482 CHROME SINGLE CABLE THROTTLE ASSEMBLY.

COMES WITH BOTH JACK HAMMER GRIPS. FITS 1" BARS

44-29484 DIE-CAST DUAL CABLE THROTTLE SET. FITS 7/8" BARS

44-29400 DIE-CAST SINGLE CABLE THROTTLE. PRE-UNIT TRIUMPH

COMES WITH BOTH GRIPS. FITS 1" BARS GRIP SET ONLY 42-24603

44-29402 THROTTLE ONLY (29400)



44-29400

44-29470



44-29474

44-29482

Risers for 1" Handlebars
Conversion shims available for 7/8" bars



23-09300 23-09608 23-09606

Risers for 1" Handlebars

23-09300 4" pullback Riser Chromed Aluminum

23-09604 4" custom round top riser

23-09606 6" custom round top riser

23-09608 8" custom round top riser

23-09610 4" custom round top riser
machined from two pieces

23-09710 6" custom round top riser

23-09620 2" Tall risers for 1" handlebars

Risers for 7/8" Handlebars

23-09614 4" custom round top riser

23-09616 6" custom round top riser

23-09618 8" custom round top riser

23-09600 Riser Conversion Shims. Allow
7/8" handlebars to be used in risers
designed for 1" handlebars

"Coke Bottle Style Grips"



Classic Coke Bottle Style Grips.
Available in 1" and 7/8"

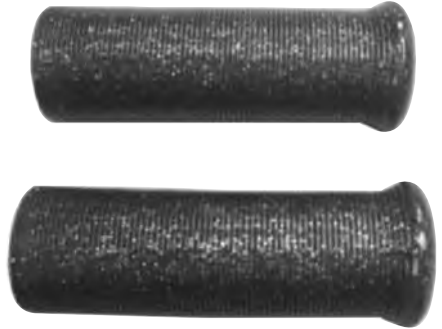
Available in 3-colors and Metalflake
1" Standard Colors 7/8"

- 42-56540 Black 42-56640
- 42-56541 White 42-55641
- 42-56542 Red 42-56642
- Metalflake
- 42-56560 Black 42-56660
- 42-56564 Red 42-56664
- 42-56569 Silver 42-56669

Metalflake Grips for 7/8 Bars.
Classic Retro Style



- 7/8" Grips,
120mm Long
- Black 42-21120
- Blue 42-21123
- Red 42-21124
- Yellow 42-21125
- Green 42-21126
- Silver 42-21129



NEW Retro Style 7/8" Grips

Retro Looking Grips
Available In
Black Or White.
Grips Are 115mm Long.
42-56580 Black
42-56581 White



Grip Sets

GRIPS ONLY

- 42-24603 GRIP SET ONLY FITS 1" BARS FOR THROTTLE 44-29400
- 42-28700 GT GRIP SET 7/8" BARS
- 42-28710 GT GRIP SET 1" BARS.
- 42-56578 JACK HAMMER GRIP SET FITS 7/8" BARS
- 42-56510 JACK HAMMER GRIP SET FITS 1" BARS



42-28700



42-56578



42-24603

Viper Fairing

70-52540
Mounting Kit

70-52520
Replacement
Windshield

70-52501
Retro styling Universal fitting
includes mounting hardware



MIRRORS



True Vision bar end mirrors



20-34020

Universal mounting bar end mirrors w/ true vision mirrors Bar End Mirror with new look "El-Chico" smaller rectangular mirror.

Buffalo "3 Inch" Custom Mirror



Chrome 3 inch die-cast body comes in Rail Back design. Fits left or right.

Slide pack one per
20-06845 Fits RH and LH
20-06846 Yamaha RH only

Universal Replicas



Replicas for late model Hondas. Fits any make or model with 10mm threads.

Slide pack one per
20-30610 LH
20-30620 RH

Chopper Mirrors



2 styles, oval and classic. 2" x 4 1/2" die-Cast or Stamped steel. Fits left or right side.

Slide pack one per
20-34814 Steel 10mm Classic
20-34824 Die-Cast 10mm
20-34834 Steel 10mm Oval



20-34812



20-06808



20-43000



20-34000

20-34010

EMGO#	DESCRIPTION
	CLAMP-ON TINTED MIRROR THREE CLAMP SIZES IN EACH BOX. FITS 3/4", 7/8", AND 1" HANDLEBARS.
20-06804	4" STEM
20-06808	8" STEM
20-06810	10" STEM
	CLAMP-ON MIRROR TWO STYLES OVAL AND CLASSIC DIE-CAST OR STAMPED STEEL.
20-34812	METAL (CLASSIC)
20-34822	DIE-CAST (CLASSIC)
20-34832	METAL (OVAL)
	UNIVERSAL 7/8" CLAMP-ON BAR-END MIRROR 7/8" HANDLEBAR. BLACK OR CHROME. FITS LEFT OR RIGHT.
20-34000	CHROME
20-34010	BLACK



MIRROR BRACKETS, AIR FILTERS, OIL PUMP



Stem Mounting Clamp
20-28100
Chrome Handlebar Clamp



Mirror Brackets

Universal to fit 7/8" handlebars.

Available in Black, Carbon or Chrome finish
Black Chrome Carbon

10mm	20-28120	20-28121	20-28122
Yam RH	20-28125	20-28126	20-28127

For Classic British

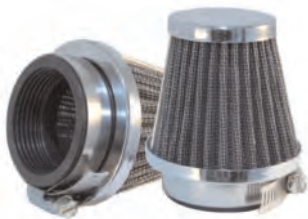


12-94209

Replaces oem: Tri 83-1537,
Fits 68-70 Bonneville
12-94207

Domed backing Plate only.
Can be used to replace the flat
plate for increased air flow

AIR FILTERS



12-55728/60



12-94200



12-94201



12-94208



12-94210

EMGO#	DESCRIPTION	EMGO#	DESCRIPTION
UNIVERSAL CLAMP-ON TAPERED AIR FILTERS WITH CHROME END CAP			
	12-55728 28MM	12-55746 46MM	
	12-55735 35MM	12-55748 48MM	
	12-55739 39MM	12-55752 52MM	
	12-55742 42MM	12-55754 54MM	
		12-55760 60MM	
<p><i>FILTER 12-94201 SAME FITTINGS AS 12-94200 THIS IS A PLEATED AND GUAZE FILTER. IT CAN BE USED DRY OR LIGHTLY OILED, REUSABLE.</i></p> <p><i>NEW FILTER 12-94208 FOR 900 SERIES CENTRAL MOUNT OEM: 60-1053/83-1537.</i></p>			
12-94200	TRIUMPH SERIES 600/900 PAPER FILTER ELEMENT	12-94204	TRIUMPH 900 SERIES OFFSET FITTING OEM# 82-6866
12-94206	TRIUMPH 376/600 SERIES CENTER FITTING (OPEN BACK)	12-94210	TRIUMPH/BSA TWINS '71-UP OEM# 60-3072



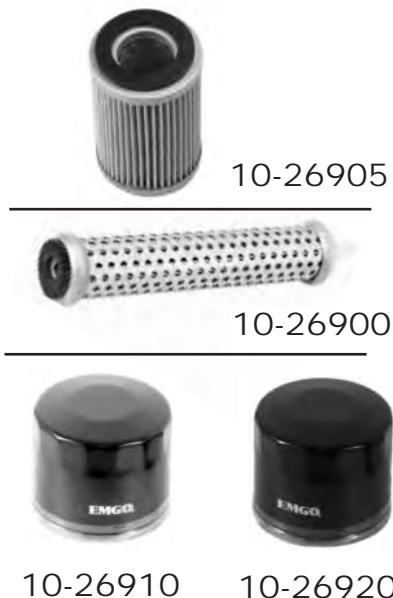
12-55780

45MM CLAMP ON AIR FILTER WITH A SUPER LOOKING CHROME HALF COVER

18-57890
FOR TRIUMPH
UNIT MODELS
'63-UP,
650/750 TWINS
'73-'79
OEM# 70-9421



OIL FILTERS, FUEL FILTERS, FUEL LINE



EMGO#	DESCRIPTION
10-26900	TRIUMPH/BSA 70-6571 TRIUMPH T150/T160 TRIDENT BSA A75 ROCKET III DROP-IN TYPES FOR TRIPLES SPIN-ON FILTERS
10-26905	BSA UNIT SINGLE OIL FILTER BSA OEM: 19-4589, 99-1179 FITS ALL BSA UNIT SINGLES
10-26910	NORTON COMMANDO '68-UP 06-3371
10-26920	TRIUMPH OEM# T1210200 FITS: ALL MODELS WITH SPIN-ON FILTER '95-'02

FUEL FILTERS, FUEL LINE

Glass Fuel Filters

Glass body with chrome end caps, individually blister packed as a kit which includes hose clamps and a spare nylon filter element.

- 14-34450 5/16" fitting
- 14-34451 1/4" fitting
- 14-34455 Replacement Element (Bag of 10)



14-34450

Nylon Fuel Filters

1/4" fitting with nylon inner screen. Individually poly bagged and mounted to a point-of-sale display card.

- 14-34421 2" Long, 1/4" fitting
15 Per Card
- 14-34441 4" Long, 1/4" fitting
10 Per Card
- 14-34442 4" Long, 5/16" fitting
10 per card



14-34441

ALUMINUM FUEL FILTERS

14-34461



Both die-cast and CNC machined types are available in 5/16" & 1/4" inch sizes, and have a cleanable brass filter element. Sold in a point-of-sale clam pack.

TYPE	COLOR	5/16"	1/4"
DIE-CAST	CHROME	14-34460	14-34461
CNC	RED	14-34430	14-34470
CNC	BLUE	14-34431	14-34471
CNC	BLACK	14-34432	14-34472
CNC	PURPLE	14-34433	14-34473
CNC	GOLD	14-34434	14-34474

FUEL LINE



clear vinyl



reinforced vinyl

Nylon Fuel Line Our clear vinyl fuel line is available in plain style or reinforced. Sold in 25 foot rolls.

REINFORCED	PLAIN VINYL	I.D.	I.D.
14-03700	14-03600	3/16"	2.0mm
14-03710	14-03610	1/4"	2.5mm
14-03720	14-03620	5/16"	3.0mm

Black Rubber Fuel & Oil Line Black reinforced line with neoprene outer cover to resist grease and oil. Sold in 25 foot rolls.

REINFORCED OIL/FUEL LINE	PLAIN RUBBER FUEL LINE	SIZE I.D.	SIZE I.D.	MAX PSI	B.P. PSI
14-03701	14-03601	3/16"	2.0mm	50	120
14-03711	14-03611	1/4"	2.5mm	200	450
14-03721	14-03621	5/16"	2.5mm	50	120
14-03731	14-03631	3/8"	2.7mm	200	450
		5/16"	3.0mm	50	120
		3/8"	3.0mm	50	120
		3/8"	3.5mm	200	450

BRAKE PADS

EMGO#	FITS	YEAR	EMGO#	FITS	YEAR
*64-48860	NORTON		64-48870	NORTON CLASSIC 88	
*91-48810	COMMANDO COMMANDO MK3	'71-'74 '75	91-48820	(ROTARY ENGINE) HARRIS BONNEVILLE W/BREMBO CALIPERS HINKLEY TRIUMPHS W/BREMBO CALIPERS DUCATI 900/SS/GTS/SPORT 500/600/650 DESMO 'PANTAH' 906 PASO MOTO GUZZI 750/850/100 LE-MANS 1100/1100i STRADA 1000 LAVERDA JOTA 1000 MIRAGE 1200 RGS 1000	
64-48861	TRIUMPH				
91-48811	BONNEVILLE T120V THUNDERBIRD TR65 BONNEVILLE T140V TRIDENT T150V TRIDENT T160V TSS 750	73-'75 '81-'83 '73-UP '73-'74 '75 '82-83			
64-48861 91-48811					
64-48870 91-48820					
	*64-FULL METAL PADS *91-SINTERED PADS				

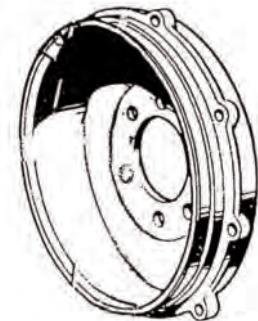
Triumph Rear Brake Drum 95-94800

REPLACES TWO OEM PART NUMBERS
37-3585 AND 37-1498

650CC MODELS FROM 1966-1970
500CC MODELS FROM 1966-1974

THE FOLLOWING ARE THIS DRUM WITH SPROCKETS
FOR MORE INFO SEE DRUM SPROCKET SECTION ON PAGE 4.

95-96243 BOLT ON DRUM SPROCKET '47-'65 37-1276 43 TOOTH
95-96246 BOLT ON DRUM SPROCKET '47-'65 37-0951 46 TOOTH



Triumph Sprocket Bolts 95-94810

REPLACES OEM 21-2010.
THESE ARE THE BOLTS AND
WASHERS THAT COME SUPPLIED
WITH BRAKE
DRUM 95-98400
1/4" X 28 (UNF)
BAGS OF 8



BRAKE SHOES



93-81009



93-81010



93-81011



93-81012



93-81016

EMGO#	FITS	YEAR
93-81009	TRIUMPH, BSA TWINS AND TRIPLES, TR6, T120 BONNEVILLE	'71-'72
93-81010	TRIUMPH (FRONT & REAR) 7" SINGLE LEADING SHOE REPLACES OEM# 371406/1407 T90, T100 T120, T150	TO '74 TO '71
93-81011	NORTON (REAR) REPLACES OEM# 060828/063417 COMMANDO, ATLAS, ETC.	'56-'74
93-81012	BSA (REAR) REPLACES OEM# 655940/5901 B441 VICTOR GOLDSTAR A50 A65 A10 B25, TRI T25	'50-'63 '66-'70 '66-'70 '54-'55 '67-'70
93-81013	BSA/TRIUMPH (FRONT) REPLACES OEM# 37-1996 F.W.H. 2/L S BSA A50 A65 A75 TRIUMPH T100R TR6-T120 T150	'70 '68-'70 '69-'70 '68-'74 '68-'70 '69-'70
93-81014	BSA/TRIUMPH (REAR) REPLACES OEM# 37-3925/6 BSA 650 TWIN A75 "3" REPLACES OEM# 37-3875/4018 TRIUMPH 650 TWIN T150 "3" T140, TR7 RV	'71-'73 '71-'72 '71-'72 '71-'74 '73-'74
93-81015	BSA (FRONT) 8" SINGLE SIDE BRAKES REPLACES OEM# 68-5541/43 A50 A65L A65T B44	'66-'68 '66-'67 '66-'68 '66-
93-81016	BSA (FRONT) 8" SINGLE SIDE BRAKES REPLACES OEM# 67-5558 A7/10 B34/31/33	
93-81017	TRIUMPH 8" FWH (NON TWIN LEADING SHOE) REPLACES OEM# 37-1732	'66-'67
93-81018	TRIUMPH 8" FWH (NON FLANGED) REPLACES OEM# 37-1410/11	'58-'65
93-81019 93-81069	FRONT AND REAR BSA BANTAM D7/D10/D14 SHOES WITH SPRINGS REPLACES OEM: 90- 719ALSO FITS TRIUMPH T20 TIGER CUB SAME AS 81019 WATER GROOVED	
	FRONT AND REAR. REPLACES OEM:37-0977	



HASTING RINGS, PISTONS, WRIST PINS, CLIPS

RING SETS ONLY

HASTING RINGS MADE IN THE U.S.

Model	Sold As	STD	+20	+40	+60	+80
Triumph <i>Available from Atlanta warehouse only</i>						
Triumph/BSA Triple/TR25/B25	1 Cyl. Set	18-89100RH	18-89102RH	18-89104RH	18-89106RH	18-89108RH
T100	2 Cyl. Set	18-89200RH	18-89202RH	18-89204RH	18-89206RH	18-89208RH
TR6/T120	2 Cyl. Set	18-89300RH	18-89302RH	18-89304RH	18-89306RH	18-89308RH
TR7/T140	2 Cyl. Set	18-89400RH	18-89402RH	18-89404RH	18-89406RH	18-89408RH
BSA						
B44	1 Cyl. Set	18-89320RH	18-89322RH	18-89324RH	18-89326RH	N/A
B50	1 Cyl. Set	18-89330RH	18-89332RH	18-89334RH	18-89336RH	N/A
A10	2 Cyl. Set	18-89340RH	18-89342RH	18-89344RH	18-89346RH	N/A
A65	2 Cyl. Set	18-89310RH	18-89312RH	18-89314RH	18-89316RH	18-89318RH
NORTON						
750	2 Cyl. Set	18-89410RH	18-89412RH	18-89414RH	18-89416RH	18-89418RH
850	2 Cyl. Set	18-89420RH	18-89422RH	18-89424RH	18-89426RH	18-89428RH

PISTON SETS ONLY, PISTON SETS INCLUDE WRIST PIN AND CLIPS

Model	Sold As	STD	+20	+40	+60	+80
Triumph						
Triumph/BSA Triple	3 Cyl. Set	18-89100	18-89102	18-89104	18-89106	18-89108
T100	2 Cyl. Set	18-89200	18-89202	18-89204	18-89206	18-89208
T100C/R 1958-1957 9:1 CR	2 Cyl. Set	18-89220	18-89222	18-89224	18-89226	18-89228
TR6/T120	2 Cyl. Set	18-89300	18-89302	18-89304	18-89306	18-89308
TR7/T140	2 Cyl. Set	18-89400	18-89402	18-89404	18-89406	18-89408
BSA						
A65	2 Cyl. Set	18-89310	18-89312	18-89314	18-89316	18-89318
NORTON						
750	2 Cyl. Set	18-89410	18-89412	18-89414	18-89416	18-89418
850	2 Cyl. Set	18-89420	18-89422	18-89424	18-89426	18-89428

WRIST PIN CLIPS, WRIST PINS



PART #	APPLICATION	DESCRIPTION	SOLD AS
18-89100C	BSA / Triumph triple	Wrist pin clips	Bag of 100
18-89100P	BSA / Triumph triple	Wrist pin	Bag of 10
18-89200C	Triumph T100	Wrist pin clips	Bag of 100
18-89200P	Triumph T100	Wrist pin	Bag of 10
18-89300C	Triumph T120 /TR6	Wrist pin clips	Bag of 100
18-89300P	Triumph T120 /TR6	Wrist pin	Bag of 10
18-89400C	Triumph T140 / TR7	Wrist pin clips	Bag of 100
18-89400P	Triumph T140 / TR7	Wrist pin	Bag of 10
18-89310C	BSA A65	Wrist pin clips	Bag of 100
18-89310P	BSA A65	Wrist pin	Bag of 10
18-89410C	Norton 750	Wrist pin clips	Bag of 100
18-89410P	Norton 750	Wrist pin	Bag of 10
18-89420C	Norton 850	Wrist pin clips	Bag of 100
18-89420P	Norton 850	Wrist pin	Bag of 10



COMPLETE GASKET SETS, INDIVIDUAL GASKETS



GASKET SETS

Head Gaskets for Triumph

13-37701 Copper Head Gasket. Fits: Triumph T120, TR6, & 650cc '63-Up. Replaces Triumph OEM: 70-4547

13-37711 Composite Head Gasket, 10 bolt head. Fits: Triumph 750 TR7RV/T140 '79-Up. Replaces Triumph OEM: 71-4619

13-37731 Copper Head Gasket, 10 bolt head. Fits: 750 TR7RV/T140 '79-Up. Replaces Triumph OEM: 71-3681



Complete Engine Sets

13-37700 Triumph 650 '63-'73	13-37710 Triumph 750 '73-'79
------------------------------------	------------------------------------



Engine sets include copper head gasket

Top End Sets

13-37720 Triumph 650 '63-'73	13-37730 Triumph 750 '73-'80
------------------------------------	------------------------------------

INDIVIDUAL GASKETS

Rotor Inspection Cover Gasket



13-37733
Fits: T100 '68-'73
T120/TR6 '68-'73
TR7RV/T140 '73-'78
Replaces Triumph OEM:
71-1457

Chaincase (Primary)



13-37742
Fits: Triumph T140, TR7
Replaces Triumph OEM:
71-7009

Inner Transmission Cover Gasket



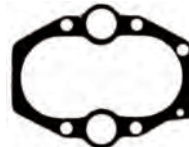
13-37732
Fits: Triumph T120, TR6
Replaces Triumph OEM:
71-3096

Rocker Box



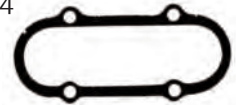
13-37702
Fits: Triumph 650 '63-'70
Replaces Triumph OEM:
70-9348

Base Gasket



13-37718
Replaces Triumph OEM:
70-6309

Rocker Box Cover Gasket



13-37704
Replaces Triumph OEM:
71-2574

Rocker Box



13-37712
Fits: Triumph T140,
TR7, & 650 '71-'74
Replaces Triumph OEM:
71-2599

Carb Flange



13-37719
Replaces Triumph OEM:
71-3573

Chaincase(Primary)



13-37713
Fits: Triumph T120, TR6
Replaces Triumph OEM:
71-1463

* Note: All Gaskets Sold 10 per bag

Contact Breaker

13-37707



Fits: All Triumph 500 & 600
Replaces Triumph OEM:
71-1462

Crankcase Vent

13-37706



Fits: All Triumph 650/750
Twins Replaces Triumph
OEM: 71-1460

Sump Gasket

All Oil in Frame Twins
13-37703



Replaces Triumph OEM:
83-2829

Manifold

13-37714



Fits: Triumph 140
Replaces Triumph OEM:
70-5660

Oil Pump

13-37715



Fits: Triumph T140, TR7
Replaces Triumph OEM:
71-3910

Oil Pump

13-37705



Fits: Triumph 650 '63 Up
Replaces Triumph OEM:
71-1461

Rocker Box Cap Gasket

13-37708



Fits: Triumph T120/TR6 63-
721/2
Replaces Triumph OEM: 70-
3751

Clutch Backing Plate Gasket

13-37709



Fits: All Unit
350/500, 650/750 Twins
Replaces Triumph OEM:
71-1419

Timing Case Gasket

13-37717



Fits: Triumph 650/750
Unit Twins
Replaces Triumph OEM:
71-2574

Outer Gearbox Gasket

13-37716



Fits: Triumph 650/750
Replaces Triumph OEM:
71-1448

Oil Pump Junction Block Gasket

13-37739



Fits: All Unit 650/750
Twins Replaces Triumph
OEM: 71-1458

Rocker Inspection Cover Gasket

13-37721



Fits: T140/TR7RV All
Replaces Triumph OEM:
71-3673

O-Rings

13-37722 Black Push Rod Tunnel Rplcs. 71-1283
13-37723 Red Push Rod Tunnel Rplcs. 70-7310
13-37725 Rocker Spindles Rplcs. 60-3548
13-37726 Push Rod Tunnel Rplcs. 70-3547
13-37727 Push Rod Tunnel Rplcs. 70-1469
13-37728 Push Rod Tunnel Rplcs. 70-4752
13-37735 Tappet Block Rplcs. 70-7563
13-37736 Inspection Plug Rplcs. 70-8782
13-37738 Shift Shaft Rplcs. 70-3309 or 60-3530
13-37743 Gearbox Sprocket Rplcs. 71-1070
50 pcs. each type per bag

Washers (Copper)

13-37724 Rocker Oil Rplcs. 70-1335
13-37729 Oil Lever Plug Rplcs. 70-2441
13-37734 Oil Way Plug Rplcs. 82-1880
13-37737 C/Case Filter Rplcs. 70-531
50 pcs. per bag

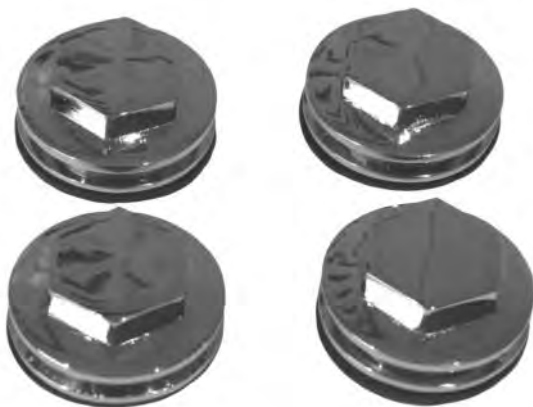
ENGINE/GEARBOX OIL SEALS, TAPPET COVERS



Engine/Gearbox Oil Seals

Model	Description	Replaces OEM#	EMGO#
<i>NORTON</i>			
Atlas	Timing cover to crankshaft 1962-75 T/S	04-8023	19-90176
Commando	Contact breaker 1967-75	03-4053, 06-3609	19-90175
750 & 850	Crankcase to crankshaft 1962-75 D/S	06-7567	19-90174
	Gearbox, mainshaft 1962-75	04-0132	19-90177
<i>TRIUMPH</i>			
T90, T100	Crankshaft to crankcase 1966-70 D/S	70-3876	19-90170
T100R	Contact breaker (in T/Cover) 1959-74	70-4568	19-90111
350/500	Cover plate G/box M/shaft to clutch B/plate 1959-66	60-3500	19-90172
	Cover plate G/box M/shaft to clutch B/plate 1967-72	70-7565	19-90168
TR6, T120 etc 650cc	Contact breaker (in T/Cover) 1963-74	70-4568	19-90111
	Cover plate G/box M/shaft to clutch B/plate 1963-66	70-4578	19-90169
	Cover plate G/box M/shaft to clutch B/plate 1967-73	70-7565	19-90168
TR7, T140 etc 750cc	Contact breaker (in T/Cover) 1973+	70-4568	19-90111
	Gearbox mainshaft high gear internal 1973+	60-3500	19-90172
	Gearbox mainshaft high gear outer into C/case 1973+	60-3512	19-90171
	Cover plate G/box M/shaft to clutch B/plate 1973-74	60-3500	19-90172
T150, T160	Contact breaker 1969-75	70-4568	19-90111
750 Trident also	Kickstart shaft to cover 1969-75	57-1956	19-90173
BSA A75			
Rocket 3			
TRI 500 preunit 650 4 speed BSA A50, A65	Mainshaft 4th gear 1947-1959	57-0946	19-90110
	1947-1973	57-0946	19-90110
			19-90110

CHROME TAPPET COVERS



18-18800
4-PIECE REPLACEMENT SETS
FOR MOST TRIUMPH TWIN MODELS
'63-'72 650, 1959-1974 500



Goggles, Replacement Lens

Classic Split Lens



76-50122

With UV400 eye protection, adjustable strap.

"Bandito"



76-50150

America's "Biker" goggles. Anti-fog, easy to change replacement lenses in your choice of 4 color tints.

Roadhawk® One-Piece



76-50110

Durable, affordable 1-piece Goggles with Anti-Fog Lenses.

Black	Description	Chrome
76-50120	Leather	76-50122
76-50100	Vinyl	76-50101

Goggles	Description	Lens Sets
76-50150	Clear	76-50160
76-50151	Blue	76-50161
76-50152	Amber	76-50162
76-50153	Smoke	76-50163

Black	Description	Chrome
76-50140	Leather	76-50142
76-50110	Vinyl	76-50111

10 Piece Spoke Wrench Set

84-27420

Spoke wrench set includes 9 corrosion resistant nickel plated heads in 5.2, 5.4, 5.6, 5.8, 6.0, 6.2, 6.4, 6.6, and 6.8mm sizes. The crisply knurled aluminum handle assures a solid grip even under greasy conditions. Supplied in a plastic case with die cut high density foam insert to keep things organized.



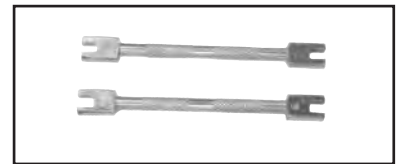
84-27410

Forged spoke wrench fits 6 sizes. Black finish.



84-27400

Spoke Wrench Set 2-piece set fits all 8, 9, 10 and 11 gauge spoke nipples.



Rim Protectors



16-26090

A very affordable way to protect those expensive rims during manual tire changes.

Tire Levers

Four types available. Quality forged alloy steel.



84-27915

15" with curved end.



84-27901

9-1/2" (240mm).

Packed 10 levers to a point of sale hang display.



84-27916

16" (400mm)



84-27905

8 3/4" tire lever with 7 metric wrench sizes. 8mm, 10mm, 12mm, 13mm, 14mm, 17mm

**CHAIN BREAKERS,
RIVETING TOOL/KITS, SNAP RING PLIERS,
SUSPENSION TOOLS, CABLE LUBERS**



Heavy Duty Chain Breakers



84-56430

Chromemoly steel chain breaker works on any 420-620 chain. Design allows pin to be completely pushed out.



Repair shop size. For 420, 428, 520, 530 and most 630 chains. Professional heavy duty style.

84-56420 Chainbreaker
84-56421 Breakerbits/
10 per bag

Chain Breaker



84-56400

For up to 530 chain
84-56402

Spare pin w/o spring

Combo Snap Ring Plier Set



84-03811

Combination snap ring plier set, for inside and outside snap rings or clips. Comes with three extra sets of tips. An extra straight tip and two off set tips.



Universal Cable Luber

84-81190

For use with aerosol cable lube can.

Chain Riveting Tool Kit

A high quality complete kit for installing riveting pins on cam or drive chains. Each kit has 3 pins (2.20 - cam chain, 2.90 - #35 chain, and 3.80 drive chain) for standard or O-Ring style chains. Can also be used to remove pins on existing chains.



84-56410
Complete Kit

84-56415
520/530
Chain rivet pin

Fork oil Level Meter



84-03812

For accurate measurement of fork oil level

**Forged Heavy Duty Shock
Spanner Wrench**



84-66310

Forged Heavy Duty Shock
Spanner Wrench

84-03850

Adjustable clutch holding tool holds the clutch hub while the hub nut is loosened. This tool will work on the vast majority for Japanese and European motorcycles as well as Harley Davidson® 80 cu. in. Big Twins after 1984 and Sportsters up to 84. The jaws open to a maximum of 5" (127mm). Two 5/16" (8mm) pins opposite the clutch hub holding jaws can be used to hold many flywheels and sprockets while the retaining nuts/bolts are loosened.
Each in a point of sale box
Case Qty 20.

Clutch Holding Tool



3 Curved Box Wrench Set



84-27500
Sizes: 1/2 x 7/16, 5/8 x 9/16
and 3/4 x 11/16.

Wire Twisting Pliers

Available in 2 sizes with return spring mechanism for easy wire twisting.

84-03816
7" pliers 8.25 long

84-03819
9" pliers 10.25 long



"S" Wrench Set



84-27510
Sizes: 3/8 x 13/32, 7/16 x 1/2,
9/16 x 19/32,
5/8 x 11/16 and 11/16 x 3/4.

Spark Plug Wrench

84-04120
5/8" Socket is 3/8" drive or 19mm wrench. Small overall design allows access to the spark plug on tight confines of engine designs. A handy 19mm hex machined into end of socket can be used to hold the front axle of many machines facilitating front axle removal.



Impact Driver

Heavy duty impact driver designed for general shop use. Reversible to tighten or loosen screws or bolts on impact. 3/8" square drive. Comes complete with four bits and a metal storage case.



84-03800 Driver with short bit set
84-03801 Short bit 4 piece replacement set
84-03802 Long bit 4 piece replacement set
#2, #3 phillips & 8/10mm slot

T-Handle Hex Key Set



84-03820 SAE Set
84-03830 Metric Set
Professional T-handle design increases turning power.
Comes with free-standing holder.

USB CHARGER, BATTERY CHARGER,
JUMPER CABLES, CHAIN BRUSH
CARBURETOR SYNCHRONIZER



Handle Bar Mount USB Charger

84-15670

Compact design mounts to either 7/8" or 1" handlebars, with included sleeve. Dual USB charging ports allows you to charge your Apple iPhone, Apple iPod, Blackberry, Garmin GPS and other modern gadgets while riding your favorite motorcycle (as long as it has a 12volt charging system.) Simply connect to your 12VDC electrical system and charge it. This wicked little gizmo will power down your 12 VDC system to DC 5V.

Cycle Jumper Cable Set



10 gauge battery jumper cable set. Insulated color coded terminal clamps for safe and secure handling
84-96306 6ft length
84-96308 8ft length

Battery Charger (6V-12V)



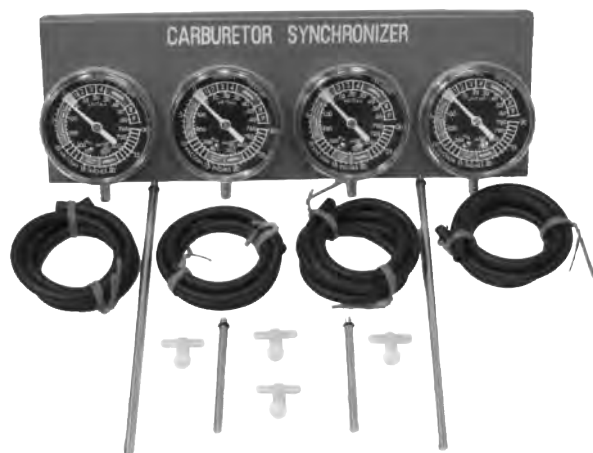
Half Amp charge rate with T-connection Input Plug that secures to the battery. Just plug in Charger Output Plug to charge the battery. No mess, no need to remove the battery every time you charge it. On/Off Switch with Power Indicator Light assures safe operation.
84-15650 for North American market
84-15610 for United Kingdom market
84-15620 for German market
84-15651 Pigtail T-Connector

Chain Brush



84-56440

Keeping your chain clean greatly extends the life of it.



Carburetor Synchronizer

Complete kit with vacuum gauges, hoses, adapters, mounting plate and instructions.

84-68592 2-carb set
84-68594 4-carb set



75-72230

CHROME FRONT FENDER.
RPLCS KAWASAKI OEM:
35003-015
FITS: Z1, A, B 1973-1975
KZ900A 1976-1977
KZ1000A 1977-1978



75-72232

CHROME FRONT FENDER.
RPLCS KAW. OEM: 35004-1047
35004-1012, 35003-019.
FITS: KZ550 LTD 80-83, KZ550 SHAFT 83-84,
KZ650 CSR 81-83, KZ750 LTD SHAFT 83,
KZ750 SHAFT II 1980, KZ750 H1-H4 LTD 80-83,
KZ750 LTD BELT 83, KZ750 CSR TWIN 82,
KZ900 LTD 76, KZ1000 LTD 77-80,
KZ1000 LTD 81-82, KZ1000CSR 82-83,
KZ1100 LTD SHAFT 83.



75-72231

CHROME REAR FENDER.
RPLCS KAWASAKI OEM:
35022-072
FITS: Z1, A, B 1973-1975
KZ900A 1976-1977
KZ1000A 1977-1978



75-72233

CHROME REAR FENDER.
RPLCS KAWASAKI OEM:
35022-151
FITS:
KZ900B1 1976

Side Stand
83-61642

With Spring,
Pivot bolt,
and nut,

Rplcs oem:
34024-038/060
Fits: Z1, Z1A,
Z1B KZ 900



Lift Handle
72-06690
Replaces oem:
32109-1004
Fits Z1000,
Z1-R, H, MkII



Kawasaki Grab Rail
72-90851
Replaces oem:
35032-022
Fits: Z1 1973-1975
KZ900 1976-1977
KZ1000 1977-1980

GRIPS, DISC ROTORS, FOOTPEGS, SHIFT LEVERS, BRAKE PEDALS, CLUTCH LEVERS



Classic Kawasaki OEM styled grips for



for 7/8 handlebars.
42-30810 Opened End
42-30811 Closed End
rplcs oem: 46075-017 left
46061-012 right

120mm Waffle/Diamond Streetbike Grips



42-40610
120mm 1/2 Waffle, 1/2 Diamond knurled handlebar grip, reduced diameter flange suitable for 7/8" bars. Each grip has 3 safety wire grooves.

Front Brake Rotor

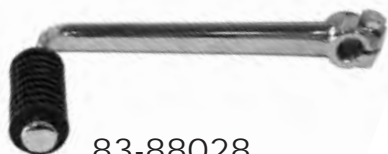


91-66000
Replaces oem: 41080-001
Fits: H1 500 '73-'75,
KH 500 A8 1976
H2 750 1972
H2 750B/C '74-'75
Z1/A/B '73-'75,

83-30850
KZ/Z1 Brake Pedal
Fits: Z1/KZ KZ900 A4
1972-76
REplaces OEM: 43001-044



83-88028
Shift Pedal with rubber for KZ/Z1
Fits: Z1-Z2/KZ900/
KZ1000 1972-80
Replaces Oem: 13242-006,
13157-004



54-05414
54-05452
Replacement Rider and Passenger footpegs with rubber for Z1, KZ900 AND KZ1000

CLUTCH LEVERS



30-54702
Replaces Oem: 46092-1024 Fits:
KZ550 Spectre '83, KZ550GPZ
'82-'83, KZ750GPZ '82, KZ750
SPECTRE '82-'83, KZ1000J '82-'83,
KZ1100GPZ '82, KZ1100 '82-'83.



30-32902
Replaces Oem: 46092-023 Fits:
KZ305 CSR'80-'82, KZ305LTD
'87-'88, KH400 '74-'75, KZ400
'78-'79, KZ400H '79,
Z400 '79-'81, KZ440 LTD'80-'83,
KZ440 '82, Z440 '80-'81, KH500
'75-'76, Z500 '79-'80, KZ550 '80-
'83, KZ550 GPZ '81, KZ650 '77-
'80, KZ650CSR '81, KZ750 (Twin)
'76-'79, KZ750E '80-'82,
KZ750LTD '80-'83, KZ900 '76-'77,
Z1-R '79-'80, KZ1000 '77-'82,
KZ1100 '81-'83, KZ1300'79-'82.



30-19812
Replaces Oem: 46092-015
Fits: CS/SS '64-'65,
GS'70-'76, GS/TR '69-'76,
GS/SS '69-'75, KE100 '76-'95,
KH100 '76-'77, S1250 '73-'76,
FS70 '70-'71, F9 '72-'75,
S2/A350 '73, KH400 '76-'77,
S3/A '74, KZ400 '74-'78,
KZ440-'80-'81,
H1 B/D/E/F '71, '73-'75,
Z1A/B 900 '73-'75



30-54722
Replaces Oem: 46092-1103 Fits:
KZ700 '84-'86, ZN700LTD '84-'86,
ZX750GPZ '83-'85, ZX1100GPZ
'83-'84 Z1100 Replica '84-'85

BRAKE LEVERS



30-32901
Replaces Oem: 46092-1004
Fits: KZ440 '82, Z400 '79-'81,
Z500 '79-'80, KZ550 '80-81,
KZ550GPZ '81, KZ650 '79-
'80, KZ750E '80-'82, KZ1000
'78-'82, KZ1100 '81-'83,
KZ1300 '79-'82,



30-29301
Replaces Oem: 46092-1002
Fits: KH250'80-'81,
KH400 '76-'78, KH500 '78-'79,
H2A/B/C '72-'75, KZ750(twin),
KZ900 '76-'77, Z1/A/B'73-'75,
KZ1000 '77-'81,



30-33441
Replaces Oem: 46092-1003
Fits: Z1-R 1979-1980



30-54731
Replaces Oem: 46092-1043
Fits: KZ750, KZ1000 1983



30-54701
Replaces Oem: 46092-1026
Fits: KZ550 GPZ '82-'83,
ZX550 '84-'86, KZ700 '84-'86,
KZ750GPZ '82, KZ1000 '82-
'83, KZ1100 GPZ '82,
KZ1100 Replica '84-'85,
ZX1100 GPZ '84



30-32971
Replaces Oem: 46092-1012
Fits: KZ750 LTD '80-'83,
KZ1000 '81-'82,
KZ1000 Police '82-'89



30-54601
Replaces Oem: 46092-1027 Fits:
KZ550 Spectre '83,
KZ550 LTD '84, ZN700 '84-'86,
KZ750 LTD '84, KZ750 Spectre,
ZX750 GPZ '83

MIRRORS

Replacement mirrors for Z1, Available in Short or long stem. Sold each mirrors fits right or left



20-29605
Short Stem (5")



20-29610
Long Stem (10")



20-29671
KZ Left
hand mirror
Replaces oem:
56001-1125

Mirrors for KZ

20-29672
KZ Right
hand mirror
Replaces oem:
56001-1123

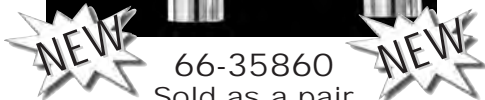
Mirrors for GPZ
20-29681
GPZ Left hand mirror, replaces oem: 56001-1144
20-29682
GPZ Right hand mirror replaces oem: 56001-1145



HEADLIGHT BRACKETS, REPLACEMENT HEADLIGHTS, REPLACEMENT LIGHTS, TAILLIGHTS, TURNSIGNALS



Headlight Brackets for Z1



66-35860
Sold as a pair
Replaces oem:
Left Side 44033-046
Right Side 44034-046

Replacement 7" headlights available in 3-finishes Lights are shown assembled with reflector and lens



66-65012
Matt Black Finish



66-65042
Chrome Finish



66-65052
Carbon Finish

Kawasaki Taillight



62-47613
Lens Only
62-47610

Complete taillight
assembly

Replaces oem: 23026-022
Fits: F6125 71-76, F7 175 71-73,
G3SS 70-73, G5100 1972,
64TR (Trail Boss) 70-73,
H1 Mach III 1969, H1C/D/E/F 72-75,
H2 Mach IV 74-75, KH500 1976,
KV100 1976, S2 Mach III 1973.



Replacement 7" Sealed Light.

66-75803 w/o Bulb

66-75804 w H4 Bulb P43 60/55W

66-75805 w/o Bulb

Sold with or
without H4 Bulb
Available only from
our Atlanta Warehouse

66-75806 w H4 Bulb P43 60/55W
**66-75810T*
Sealed Beam 12v 75/75W

Replacement Chrome Headlight Rims and Rim/Retainer

66-65000 Rim Only

66-65030 Rim/ Retainer complete assy.

replaces Kawasaki oem: 230006-038

Fits: KZ550 80-83, KZ650 78-79,

KZ750E/G/H/M 80-83,

KZ1000 A/B/G/J/M 77-83,

KZ1100 81-83

Turnsignal Assemblies

NOT D.O.T APPROVED



62-19330
Rplcs oem:
23026-034
Fits:
KZ650/750
1000 ZR

**KZ/ZR Taillight
Lens**



**Z1/A/B
Taillight Lens**

62-47630
Rplcs oem:
23026-023,
23026-027
Fits:
KE100 A8/A9/A10
KM100 A4,
KH100A2/A3/A4/G2
KH250/400A3/A4



60-36310
Single Filament fits
front and rear

Replaces Oem: 23040-029

Fits: KZ400 All, KZ440B '80-'81,

KZ650B 76-79, H1/H2, Z1-A/B

'73-'75, KZ900 '76-'77, KZ1000LTD

'77-'80, KZ1000C '78-'80

Lens Only 60-36330

Replaces Oem: 23048-0012

Fitments same as above



60-44220
Front Dual Filament

Rplcs Oem: 23037-11311

60-44210

Rear Single Filament

Rplcs Oem: 23037-11311

Fits: KZ550D GP '81,

KZ550H GPZ '82-'83,

KZ700A '84,

KZ750L '83, KZ750R GPZ '82,

KZ1000J '81, KZ1000R '82,

KZ1100B GPZ '81-'82

Lens Only 60-44230



URNSIGNAL ASSEMBLIES,URNSIGNAL STEMS
FLASHER RELAYS,IGNITION COILS, HANDLEBAR SWITCHES.
IGNITION SWITCHES, STATOR, STATOR COVERS

Turn Signal Stems



68-77995



68-77930

68-77930 (short) 58mm

68-77995 (Long) 95mm

Flasher Relay

66-86722

Replaces Oem:
27002-011

For H-models,
early KZ/KH



Ignition Coils



24-72455

H2 Ignition Coil

rplcs oem: 21121-064, Fits:
'72-'75 Kawasaki H2 (Mark IV)



24-72451

Fits: All models with points ignition,
including Z400D, KZ400D (Twin),
KZ750B/G(Twins),
Z1, KZ900/KZ1000 1973-1978.

Stator for Z, Z1

48-98630

Fits:

Z1/Z11/Z900/1000A

Replaces oem:

21076-023



Stator cover for KZ, Z1

18-18890

Fits:

Z1A/B '73-'75,

Z/KZ900 '76-'77

Replaces oem:

14031-1020

14031-053



Turnsignal Assemblies

60-44240



NOT D.O.T APPROVED

60-44250



60-44241 Front Single Filament lens

60-44240 Front Dual filament lens.

Replaces Oem: 3203701150

60-44250 Rear single filament lens.

Replaces Oem: 32037-1151

Fits: ZX550A GPZ '84-'85,

ZX750A GPZ '83-'86,

ZX750 GPZ Turbo, ZX1100 GPZ

Lens Only 60-44230

Replaces Oem: 23048-0012

Fitments same as above

60-38810

Black Single filament

Replaces Oem: 23037-1030 Fits: Z1R

Handlebar Switches



34-68891

Handlebar Switch

Assembly Left

Replaces oem:

46091-057

Fits: Z1B,

KZ900A4,

KZ900B1 LTD,

Z250A (non US model)



34-68892

Handlebar Switch

Assembly Right

Replaces oem:

46132-024

Fits: Z1B,

KZ900A4,

KZ900B1 LTD,

Z250A (non US model)

Ignition Switches



40-80600

Ignition Switch

Replaces oem:

27005-083

27005-5007

Fits KZ650/750/

900/1000 '73-'80



40-80610

Ignition Switch

Rplcs. oem:

27005-083/5047,

Fits EX500 '87-'89,

KZ550 '81-'83,

ZX550 '84-'85, ZX600 '85-'87,

KZ650 '81-'82, KZ700 '84,

VN700 '85, KZ750 '80-'83

ZX750 '83-'88, VN750 '86-'89,

ZX900 '84-'86, ZX1100 '81-'84

KZ1000/1100 '81-'83,

ZX1100 '81-'84

ENGINE COVERS, GASKET, BRAKE LIGHT/NEUTRAL SWITCHES, VALVES, GAS CAPS



Engine Covers, Gasket

Kawasaki Z1/KZ1000
Starter Cover
18-18889

Replaces oem: 21165-001
Fits: Z1 A/B 73-75,
KZ9000 76-77,
KZ1000 77-80,
KZ1000B (LTD) 77-80,
KZ1000 Police 78-81,
KZ1000D1 (Z1R) 78-80,
KZ1000 (Shaft) 79-80,
KZ1000 (Classic)

Starter Motor
Cover Gasket (rubber)



13-65910

Replaces oem: 21166-001
Fits: Z1 A/B 73-75,
KZ9000 76-77,
KZ1000A 77-83,
KZ1000B LTD 77-82
KZ1000C Police 78-05
KZ1000D Z1R, 78/80,
KZ1000E Shaft(ST) 79-80
KZ1000G Classic 1980
KZ1000R Lawson Replica
82-83
KZ1100 Shaft 81-83
KZ1100B GPZ 81-82
KZ1100D Specter 82-83
KZ1100 LTD Shaft 83
ZN1100 LTD Shaft 84-85
ZX1100A GPZ 83-84

Kawasaki Z1/KZ1000
R/H Crankshaft Cover

18-18891
Replaces oem: 14032-083
Fits: Z1 A/B 73-75,
KZ9000 76-77,
KZ1000 77-80,
KZ1000B (LTD) 77-80,
KZ1000 Police 78-81,
KZ1000D1 (Z1R) 78-80,
KZ1000 (Shaft) 79-80,
KZ1000 (Classic)

Brake Light Switch

46-50752

NO PHOTO

Replaces oem: 27010-017/1418

Fits: F-11 73-75,
KZ550 80-83, KZ650 77-80,
KZ900 76-77, KZ100077-81



Neutral Switch
for Kawasaki
KZ Models

46-50772

Rplcs OEM: 13151-05003,
13151-022,
FITS: KZ900A 76-77,
KZ900B1 76,
KZ1000A/B 77-80,
KZ1000C/P Police 78-81,
KZ1000D 78-80,
KZ1000G Classic 80,
KZ1000, 1000 LTD 81-82,
KZ1000CSR 81-82,
KZ1000 83-00,
KZ1000 Lawson 82-83,
KZ1100 GPZ 81-82



Valves for Kawasaki Z1, KZ900



18-55821 18-55820

For Kawasaki Z1
1973-1975

KZ900

1976-1977

18-55820 Intake

18-55821 Exhaust

Replaces Kawasaki oem:
Intake 12004-012
Exhaust 12005-005

Gas Caps for Z1, H2, KZ, KH



43-61010

43-61010 Fits: Z1A/B, H2 Non Locking



43-61012

43-61012 replaces oem: 92043-127
Fits: KH125 2000, 03-04, Mach 1 73-75,
KZ200 78-79, KH250 76, KH400 76-78,
KZ400 76-78, H1-75, KH500 76,
KZ65077-80, KZ750B/G 76-80,
KZ900 76-77



**GAUGE COVERS, GAUGE BRACKETS,
TANK/SIDE COVER EMBLEMS**

Z1, KZ900
Gauge Covers

58-12410



58-85100

Chrome Gauge
Covers

Top 58-12410 (pair)
Bottom 58-85100 (pair)

Tank Badges, Side Cover Emblem
Sold per set R/L



Z1 Gas Tank Emblem w/Screws
99-95901

73-74 Z1, Z1A, Z1B
140mm between bolt holes)
oem# 56013-054/56014-049

Tank Badge for Classic Kawasaki.
For early to mid
1980'S KZ Models



43-95911

43-95910

43-95912

Silver/Black

White/Black

Gold/Black

99-95900A

Side Cover Emblem



(1972 - 1974) Z1, Z1A
Replaces oem# 56018-139

Z1, KZ900 Gauge Brackets

58-37454

Replaces oem: 25008-039

Fits: KZ650 1977-1980,

KZ750 B/G 1976-1980

KZ900A/B 1976-1977

KZ1000 1977-1980

58-37453

Replaces oem:

25008-025

25008-044

Fits: 900Z1 Z1A/Z1B

1973-1975



50 per case

SHOCKS



NOW AVAILABLE IN CHROME

Emgo Classic Shocks
 The shocks feature glossy black body and short upper shroud with dual chrome springs, upper collar and stepped pre-load adjuster.
 Each shock set includes 10, 12 and 14mm bushings.
 Sold in Pairs.
 Case Quantity 6 Pairs

BLACK/CHROME	CHROME	MODEL	YEAR	LENGTH	TYPE
KAWASAKI					
17-05572	17-05574	KZ200 A1 - A2	1978 - 1979	325MM	EYE/EYE
17-05572	17-05574	KZ250 D/L/W	1980 - 1983	325MM	EYE/EYE
17-05572	17-05574	KH250	1973 - 1976	325MM	EYE/EYE
17-05572	17-05574	KZ305 A/B	1981 - 1988	325MM	EYE/EYE
17-05572	17-05574	KH400 A3 - A4	1975 - 1976	325MM	EYE/EYE
17-05572	17-05574	S3 A (400)	1974 - 1975	325MM	EYE/EYE
17-05572	17-05574	KZ400A/B/C/D/S	1974 - 1979	325MM	EYE/EYE
17-05572	17-05574	H1A-F/KH500	1969 - 1976	325MM	EYE/EYE
17-05512	17-05514	KZ550 DI (GPZ)	1981	335MM	EYE/EYE
17-05512	17-05514	KZ550 A1 - A3	1980 - 1982	335MM	EYE/EYE
17-05572	17-05574	KZ550 C1 - C4	1980 - 1983	325MM	EYE/EYE
17-05572	17-05574	KZ650B/C/D/E/F/H	1977 - 1983	325MM	EYE/EYE
17-05572	17-05574	VN700 A1	1985	325MM	EYE/EYE
17-05572	17-05574	H2A/B/C/ (750)	1972 - 1975	325MM	EYE/EYE
17-05572	17-05574	KZ750B1 - B4	1976 - 1979	325MM	EYE/EYE
17-05512	17-05514	KZ750E/H/R	1980 - 1983	335MM	EYE/EYE
17-05572	17-05574	VN750A2 - A4	1986 - 1988	325MM	EYE/EYE
17-05512	17-05514	KZ900A/B	1976	335MM	EYE/EYE
17-05512	17-05514	Z1/Z2	1973 - 1975	335MM	EYE/EYE
17-05512	17-05514	KZ1000A/B/D/E/R/M	1977 - 1983	335MM	EYE/EYE
17-05512	17-05514	KZ1100A/B/L	1981 - 1983	335MM	EYE/EYE



Shocks for Z1/A/B And KZ900/1000

Replaces oem: 45014-072
 Fits KZ900, KZ1000A/B '76-'77,
 Z1A/B '73-'75

Chrome shocks, Sold per pair

17-05690
 with Red Reflector fits Z1A/B '73-'75

17-05690A
 with Amber reflector
 Reflector lenses set only
 17-05690B Red 17-05690C Amber
 17-05691

Plain no reflector fits: KZ900, KZ1000A/B



Kawasaki H1/H2 Shocks



17-05692
 Replaces Kawasaki oem: 45014-056,
 45014-096
 Applications: 1969-1975 H1 Mach III 500
 1972-1975 H2 Mach IV 750

Fork Tubes

45-39640
 rplcs oem: 44013-037, Fits: Z1A/B '73-'75
 KZ900 A4-A5 '76-'77,
 KZ900B1 LTD '76, KZ1000 '77

45-39641
 For H2 Models, this fork tube is a shorter version of the Z1 fork tube. It is about 2 31/16" shorter. Can be used to lower A Z1, you will need to shorten the fork springs

45-39648 Fork Dust Boot for Vintage Kawasaki



Replaces oem: 44010-32 Fits: KX250 74-76,
 KXT250 Tecate 1985, KX400 75-76,
 H1 73-75, KZ650 Custom 77-79,
 KZ650SR 78-79, KZ650 LTD 80,
 KZ750B (Twin) 76-79,
 KZ750 LTD 1980, KZ900/LTD 76-77,

EMIGO CLASSIC SHOCKS

These shocks are available in chrome or glossy black body, both feature short upper spread with dual chrome springs, upper collar and stepped pre-load adjuster. Each shock set includes 10, 12 and 14mm bushings. Sold in Pairs. Case Qty. 6 pairs

AVAILABLE
NOW IN
CHROME



BLACK/CHROME	CHROME	MODEL	YEAR	LENGTH	TYPE
HONDA					
17-05532	17-05534	CB350F/F1	1973 - 1974	340MM	EYE/CLEVIS
17-05532	17-05534	CB/CL350	1969 - 1973	340MM	EYE/CLEVIS
17-05532	17-05534	SL350	1969 - 1972	340MM	EYE/CLEVIS
17-05532	17-05534	CB360	1974	340MM	EYE/CLEVIS
17-05532	17-05534	CJ360	1976 - 1977	340MM	EYE/CLEVIS
17-05532	17-05534	CL360	1974 - 1975	340MM	EYE/CLEVIS
17-05532	17-05534	CB400F	1975 - 1977	340MM	EYE/CLEVIS
17-05532	17-05534	CM400A/C/E/T	1979 - 1981	340MM	EYE/CLEVIS
17-05532	17-05534	CB450K1 - K7	1968 - 1974	340MM	EYE/CLEVIS
17-05532	17-05534	CL450K2 - K6	1970 - 1974	340MM	EYE/CLEVIS
17-05532	17-05534	CM450A/C/E	1981 - 1983	340MM	EYE/CLEVIS
17-05532	17-05534	CB500K1 - K2	1971 - 1973	340MM	EYE/CLEVIS
17-05532	17-05534	CB500T	1975 - 1976	340MM	EYE/CLEVIS
17-05572	17-05574	CX500C/D	1978 - 1982	325MM	EYE/EYE
17-05572	17-05574	VT500FT	1983 - 1984	325MM	EYE/EYE
17-05572	17-05574	XBR500	1987 - 1989	325MM	EYE/EYE
17-05532	17-05534	CB550F/K	1975 - 1977	340MM	EYE/CLEVIS
17-05532	17-05534	CB650C	1979 - 1982	340MM	EYE/CLEVIS
17-05542	17-05544	CB650SC	1982	365MM	EYE/CLEVIS
17-05572	17-05574	CB650SC	1983 - 1985	325MM	EYE/EYE
17-05532	17-05534	CB700SC	1984 - 1986	340MM	EYE/CLEVIS
17-05572	17-05574	VF700C	1985 - 1987	325MM	EYE/EYE
17-05532	17-05534	CB750K1 - K5	1970 - 1975	340MM	EYE/CLEVIS
17-05532	17-05534	CB750A/F	1976 - 1978	340MM	EYE/CLEVIS
17-05542	17-05544	CB750F/K	1979 - 1982	365MM	EYE/CLEVIS
17-05532	17-05534	CB750C/SC	1980 - 1983	340MM	EYE/CLEVIS
17-05572	17-05574	VT750C	1983	325MM	EYE/EYE
17-05572	17-05574	CB900C	1980 - 1982	325MM	EYE/EYE
17-05542	17-05544	CB900F	1981 - 1982	365MM	EYE/CLEVIS
17-05572	17-05574	CB1000C	1983	325MM	EYE/EYE
17-05542	17-05544	CBX	1979 - 1982	365MM	EYE/CLEVIS
17-05532	17-05534	GL1000	1975 - 1979	340MM	EYE/CLEVIS
17-05542	17-05544	CB1100F	1983	365MM	EYE/CLEVIS
BLACK/CHROME	CHROME	MODEL	YEAR	LENGTH	TYPE
KAWASAKI					
17-05572	17-05574	KZ200 A1 - A2	1978 - 1979	325MM	EYE/EYE
17-05572	17-05574	KZ250 D/L/W	1980 - 1983	325MM	EYE/EYE
17-05572	17-05574	KH250	1973 - 1976	325MM	EYE/EYE
17-05572	17-05574	KZ305 A/B	1981 - 1988	325MM	EYE/EYE
17-05572	17-05574	KH400 A3 - A4	1975 - 1976	325MM	EYE/EYE
17-05572	17-05574	S3 A (400)	1974 - 1975	325MM	EYE/EYE
17-05572	17-05574	KZ400A/B/C/D/S	1974 - 1979	325MM	EYE/EYE
17-05572	17-05574	H1A-F/KH500	1969 - 1976	325MM	EYE/EYE
17-05512	17-05514	KZ550 DI (GPZ)	1981	335MM	EYE/EYE
17-05512	17-05514	KZ550 A1 - A3	1980 - 1982	335MM	EYE/EYE
17-05572	17-05574	KZ550 C1 - C4	1980 - 1983	325MM	EYE/EYE
17-05572	17-05574	KZ650B/C/D/E/F/H	1977 - 1983	325MM	EYE/EYE
17-05572	17-05574	VN700 A1	1985	325MM	EYE/EYE
17-05572	17-05574	H2A/B/C (750)	1972 - 1975	325MM	EYE/EYE
17-05572	17-05574	KZ750B1 - B4	1976 - 1979	325MM	EYE/EYE
17-05512	17-05514	KZ750E/H/R	1980 - 1983	335MM	EYE/EYE
17-05572	17-05574	VN750A2 - A4	1986 - 1988	325MM	EYE/EYE
17-05512	17-05514	KZ900A/B	1976	335MM	EYE/EYE
17-05512	17-05514	Z1/Z2	1973 - 1975	335MM	EYE/EYE
17-05512	17-05514	KZ1000A/B/D/E/R/M	1977 - 1983	335MM	EYE/EYE
17-05512	17-05514	KZ1100A/B/L	1981 - 1983	335MM	EYE/EYE

BLACK/CHROME	CHROME	MODEL	YEAR	LENGTH	TYPE
SUZUKI					
17-05572	17-05574	GT185	1972 - 1977	325MM	EYE/EYE
17-05572	17-05574	GS250	1980 - 1981	325MM	EYE/EYE
17-05572	17-05574	GT250/L/M/A/B/C	1973 - 1978	325MM	EYE/EYE
17-05572	17-05574	T250	1970 - 1973	325MM	EYE/EYE
17-05512	17-05514	GS300	1983 - 1985	335MM	EYE/EYE
17-05572	17-05574	T350	1970 - 1973	325MM	EYE/EYE
17-05572	17-05574	GT380	1972 - 1977	325MM	EYE/EYE
17-05512	17-05514	GN400	1980 - 1982	335MM	EYE/EYE
17-05572	17-05574	GS400	1977 - 1978	325MM	EYE/EYE
17-05512	17-05514	GS425	1979	335MM	EYE/EYE
17-05512	17-05514	GS450	1980 - 1983	335MM	EYE/EYE
17-05532	17-05534	RE5 (ROTARY)	1975 - 1976	340MM	EYE/CLEVIS
17-05572	17-05574	GT500	1975 - 1977	325MM	EYE/EYE
17-05572	17-05574	T500	1971 - 1975	325MM	EYE/EYE
17-05512	17-05514	GS550	1977 - 1982	335MM	EYE/EYE
17-05572	17-05574	GT550	1972 - 1977	325MM	EYE/EYE
17-05572	17-05574	GS650GLX	1982	325MM	EYE/EYE
17-05512	17-05514	GS650EX/GLX	1981	335MM	EYE/EYE
17-05572	17-05574	VS700	1985 - 1986	325MM	EYE/EYE
17-05532	17-05534	GS750	1977 - 1983	340MM	EYE/CLEVIS
17-05572	17-05574	GT750	1972 - 1977	325MM	EYE/EYE
17-05512	17-05514	GS850	1978 - 1982	335MM	EYE/EYE
17-05532	17-05534	GS1000	1978 - 1982	340MM	EYE/CLEVIS
17-05532	17-05534	GS1100LT	1980	340MM	EYE/CLEVIS
17-05532	17-05534	GS1100E	1980 - 1983	340MM	EYE/CLEVIS
17-05532	17-05534	GS1100SD KATANA	1983	340MM	EYE/CLEVIS
17-05512	17-05514	GS1100GLZ/GLD	1982 - 1983	335MM	EYE/EYE
BLACK/CHROME	CHROME	MODEL	YEAR	LENGTH	TYPE
YAMAHA					
17-05512	17-05514	RD250	1973 - 1975	335MM	EYE/EYE
17-05572	17-05574	RD250E	1978 - 1979	325MM	EYE/EYE
17-05512	17-05514	RD350	1973 - 1975	335MM	EYE/EYE
17-05512	17-05514	XS360	1976 - 1977	335MM	EYE/EYE
17-05572	17-05574	RD400C/D/E/F	1976 - 1979	325MM	EYE/EYE
17-05572	17-05574	XS400	1977 - 1981	325MM	EYE/EYE
17-05572	17-05574	SR500	1978 - 1981	325MM	EYE/EYE
17-05572	17-05574	XS500	1975 - 1977	325MM	EYE/EYE
17-05572	17-05574	XJ550	1981 - 1983	325MM	EYE/EYE
17-05512	17-05514	TX650	1973 - 1974	335MM	EYE/EYE
17-05572	17-05574	XJ650	1980 - 1983	325MM	EYE/EYE
17-05572	17-05574	XS650	1975 - 1983	325MM	EYE/EYE
17-05572	17-05574	XV700	1984 - 1986	325MM	EYE/EYE
17-05572	17-05574	XJ750	1981 - 1983	325MM	EYE/EYE
17-05572	17-05574	XS750	1977 - 1978	325MM	EYE/EYE
17-05572	17-05574	XS850	1980 - 1981	325MM	EYE/EYE
17-05572	17-05574	XJ900	1983	325MM	EYE/EYE
17-05572	17-05574	XJ1100	1982	325MM	EYE/EYE
17-05572	17-05574	XS1100	1979 - 1981	325MM	EYE/EYE
17-05572	17-05574	XV1100	1984 - 1986	325MM	EYE/EYE
17-05572	17-05574	XV1100S/SG	1986	325MM	EYE/EYE
17-05572	17-05574	VMX-12N/NC VMAX	1985	325MM	EYE/EYE

EMIGO CLASSIC SHOCKS

17-05512/14 335mm Eye/Eye
 17-05532/34 340mm Eye/Clevis
 17-05542/44 365mm Eye/Clevis
 17-05572/74 325mm Eye/Eye

Note:
 4-sets fit over 100 Motorcycle Models of
 Honda, Kawasaki,
 Suzuki and Yamaha.
 Easy inventory...Good sales.

BRAKE PADS, BRAKE SHOES



Emgo #	Shoes/Pads	Front/Rear	Model	Year	OEM	
92-42010	Shoes	Rear	KZ900	76-77	41048-016	
92-42010	Shoes	Rear	H2 750SS	72-75		
91-81309	Pads	Front	KH500	76	43082-1001	
91-81309	Pads	Front	KZ650	77-79		
91-81309	Pads	Front	KZ750 B1-B4	76-79		
91-81309	Pads	Front	KZ900	76-77		
91-81309	Pads	Front	KZ1000A/B/C/D	77-78		
91-81305	Pads	Front	KH250	76-80	43050-1004	
91-81305	Pads	Front	KZ250	79-80		
91-81305	Pads	Front	KH400	75-79		
91-81305	Pads	Front	KZ400 LTD	79		
91-81305	Pads	Front	Z400	79-80		
91-81305	Pads	Front	KZ440	80-82		
91-81305	Pads	Front	KH500	76-77		
91-81305	Pads	Front	KZ550	80		
91-81305	Pads	Front	KZ650 Custom Series	77-70		
91-81305	Pads	Front	KZ650 CSR	81-83		
91-81305	Pads	Front	Z650	77-80		
91-81305	Pads	Front	KZ750B	76-79		
91-81305	Pads	Front	KZ750 LTD	80		
91-81305	Pads	Front	KZ900	76-77		
91-81305	Pads	Front	KZ1000LTD	77-80		
91-81305	Pads	Front	KZ1000A/B	79-80		
91-81305	Pads	Front	KZ1000Z1-R	78/80		
91-81305	Pads	Front	KZ1000 Police	78-81		
91-81305	Pads	Front	KZ1000 ST & Shaft	79-80		
91-81305	Pads	Front	KZ1000 MK II	79-81		
91-81305	Pads	Front	Z1000	79-80		
91-81317	Pads	Front	KZ1300	79-82		43082-1004
91-81317	Pads	Front	KZ1300 Touring	80		
91-81314	Pads	Front	KZ305 CSR	80-82	43082-1008	
91-81314	Pads	Front	KZ440A4/LTD	83		
91-81314	Pads	Front	KZ440G1	82		
91-81314	Pads	Front	KZ550 A1-A4	81-83		
91-81314	Pads	Front	KZ550 LTD	80-83		
91-81314	Pads	Front	KZ550GPZ	81		
91-81314	Pads	Front & Rear	KZ550GPZ	82-83		
91-81314	Pads	Front	KZ550 Specter, LTD	83-84		
91-81314	Pads	Front	KZ650 CSR	81-83		
91-81314	Pads	Front & Rear	KZ700	84		
91-81314	Pads	Front & Rear	KZ750	80-82		
91-81314	Pads	Front & Rear	KZ750 LTD	80-83		
91-81314	Pads	Front & Rear	KZ750 L3	83		
91-81314	Pads	Front	KZ750CSR	82		
91-81314	Pads	Front and Rear	KZ1000 J1-J3	81-83		
91-81314	Pads	Front and Rear	KZ1000K1/K2	81-82		
91-81314	Pads	Front and Rear	KZ1000 M1/M2	81-82		
91-81314	Pads	Front and Rear	KZ1000 Police	82-83		
91-81314	Pads	Front and Rear	KZ1100	81-83		
91-81314	Pads	Front and Rear	KZ1100GPZ	81		
91-81314	Pads	Front and Rear	KZ1100 Spectre	82-83		
91-81314	Pads	Front and Rear	KZ1100 LTD	83		
91-81318	Pads	Front and Rear	ZX550GPZ	86		43082-1029
91-81318	Pads	Front	KZ750 LTD	83-84		
91-81318	Pads	Front and Rear	ZX750 Turbo	84-85		
91-81318	Pads	Front and Rear	ZX900 Ninja	84-86		
91-81318	Pads	Front and Rear	ZX1000 Ninja	86-87		
91-81318	Pads	Front and Rear	ZN700 LTD	84-85		
91-81318	Pads	Front and Rear	ZX750 GPZ	83-85		
91-81318	Pads	Front and Rear	ZL900 Eliminator	85-86		
91-81318	Pads	Front and Rear	ZL1000 Eliminator	87		
91-81318	Pads	Front and Rear	ZX1100 GPZ	83-84		
91-81318	Pads	Front and Rear	ZN1300 Voyager	83-88		



SPROCKETS

KAWASAKI	YEAR	STK CHAIN	STK TEETH	EMGO FRONT #	EMGO REAR #		
ZX11 A1/A2 (GPZ)	83-84	630-100	15-41	95-29415	95-39132/46		
KZ1100 B2 (GPZ)	82	630-98	15-42	95-29314/16	95-39132/46		
KZ1100 B1 (GPZ)	81	630-98	15-41				
KZ1000 R1/R2 (REPLICA)	82-83	630-98	15-41	95-29314/16	95-39132/46		
KZ1000 P2/P20 POLICE	83-01	630-98	15-41				
KZ1000 P1 POLICE	82	630-96	15-41				
KZ1000 M1/M2 (CSR)	81-82	630-96	15-39				
KZ1000 K1/K2 (LTD)	81-82	630-96	15-39				
KZ1000 J1/J3	81-83	630-96	15-41				
KZ1000 G1 CLASSIC	80	630-92	15-33			95-29214/16	95-39132/46
KZ1000 D3 (Z1R)	80	630-92	15-35				
KZ1000 D1 (Z1R)	78	630-92	15-33				
KZ1000 C3/C4 POLICE	80-81	630-92	15-35				
KZ1000 C1/C2 POLICE	78-79	630-94	15-37				
KZ1000 B1/B4 (LTD)	77-81	630-92	15-33				
KZ1000 A3/A4	79-80	630-92	15-35				
KZ1000 A1/A2	77-78	630-92	15-33				
KZ900 A4/A5	76-77	630-92	15-33	95-29214/16	95-39033/37		
KZ900 B1 (LTD)	76	630-92	15-35	95-49114/15	95-39033/37		
Z1/Z1A/Z1B	73-75	630-92	15-35				
ZX750 H2 (ZX7)	90	530-112	16-46	95-25015/16	95-33038/46		
ZX750 H1 (ZX7)	89	530-112	16-46				
ZX750 F1/F4 NINJA	87-90	530-110	16-47	95-47315/17	95-37444/50		
ZX750 A1/A3 (GPZ)	83-85	630-94	15-38	95-29615	95-39132/46		
ZX750 E1/E2 (TURBO)	84-85	630-98	15-46	95-49114/15	95-39132/46		
KZ750 L3	83	630-88	13-33				
KZ750 R1 (GPZ)	82	630-88	13-33				
KZ750 M1 (CSR)	82	530-106	16-38			95-47315/17	95-37338/46
KZ750 H1/H4 (LTD)	81-83	630-84	13-32			95-49114/15	95-39132/46
KZ750 E1/E3	80-82	630-84	13-33				
KZ750 G1 (LTD)	80	530-106	16-38			95-47315/17	95-37338/46
KZ750 B1/B4	76-79	530-106	16-38				
H2 MACH IV 750 H2A/B/C	72-75	530-120	14-41			95-27014/16	95-37033/48
KZ700 A1/A1L	84	630-88	13-33			95-49114/15	95-39132/46
KZ650 H1/H3 (CSR)	81-83	630-84	13-33			95-47315/17	N/A
KZ650 F1	80	530-102	16-42				
KZ650 E1 (LTD)	80	530-102	16-41				
KZ650 D SR,D2	77-79	530-102	16-41				
KZ650 D SR,D1	78-79	530-102	16-40				
KZ650 C1/C3 CUSTOM	77-79	530-102	16-42				
KZ650 B1/B3	77-79	530-102	16-42	95-47315/17	N/A		
ZX600 C1/C10 (GPX)	88-97	530-102	15-39	95-47315/17	95-37139/48		
ZX600 B1 NINJA	87	530-102	15-39				
ZX600 A1/A3 (GPZ)	85-87	530-102	15-39				
ZX550 A1/A3 (GPZ)	84-86	520-104	16-38	95-24113/17	95-85138/46		
KZ550 D1 (GPZ)	81	530-100	16-38	95-47315/17	95-37338/46		
KH500 A1 H1-D/E/F	73-76	530-106	15-45	95-27014/16	95-37240/45		
KZ440 K1,D2/D6 (LTD)	80-85	530-104	15-45	95-20215	95-37033/48		
KZ440 B1/B2	80-81	530-100	15-45				
KZ440 A1/A4 (LTD)	80-83	530-104	15-45				
KZ400 H1 (LTD)	79	530-104	15-45				
KZ400 S,S2,S3	75-77	530-100	15-45				
KZ400 D,D3,D4	74-77	530-100	15-45				
KZ400 C1	78	530-100	15-45				
KZ400 B1/B2	78-79	530-100	15-45				
KZ400 A1/A2 DELUXE	77-78	530-100	15-45				
KH400 A3/A5	76-78	530-104	15-41			95-27014/16	95-37033/41
KZ250 D1(LTD)D2(CSR)	80-81	520-102	15-37			95-24212/17	95-34037/54
KZ200 A1A	78	520-98	15-40				
KZ200 A1/A2	78-79	520-98	15-40				
EX250 NINJA (250R)	88-13	520-106	14-45			95-21914/16	95-36238/48
EX250 NINJA	86-87	520-104	14-42				
KH100 B7/B8	76-77	428-110	14-37	95-22213/16	95-32334/50		

EXHAUST GASKETS AIR FILTERS, CABLES



Exhaust Gaskets

MAKE	EMGO #	OEM REFERENCE	FITTINGS	YEARS
KAWASAKI	13-87826	18067-004 11009-1866		
			KZ200	78-79
			Z200	83
			BJ250	96-05
			EL250	88-92
			EX250	90-04
			KZ250	81-83
			EX305	83
			KZ305	81-82
			KZ305	82, 87-88
			KZ550	81-83
			Z550	81-91
			ZR550	90-93
			ZX550	84-86
			ZL600	86-97
			KZ650E,F,H	80-83
			Z650	80
			ZN700	84-85
			KZ750H,L,N	80-83
			ZR750C,D,F	82-05
			ZX750A,E	79-85
			KZ1300A,B	79-88
MAKE	EMGO #	OEM REFERENCE	FITTINGS	YEARS
KAWASAKI	13-87827	18067-018 11009-1906		
			ZX750	87-90
			Z1900	73-75
			KZ900	76-77
			KZ1000	77-05
			KZ1100	81-83
			ZN1100	83-85
			ZG1200	87-03
MAKE	EMGO #	OEM REFERENCE	FITTINGS	YEARS
KAWASAKI	13-87829	18067-013 11009-1840		
			ZL400C	88
			W1/S	66-69
			W2S	68-69
			EJ650A,C	00-05
			H1 MACH III	69-75
			KZ750B,G,K	76-84
			ZL900A	85-86
			ZX900A	84-86
			ZX1200A,D,C	00-06



TACH CABLE FOR H2
26-58306
TACHOMETER CABLE FOR
1972-1975 KAWASAKI H2

Air Filters

KAWASAKI			
EMGO#	OEM	MODEL	YEARS
12-93000	O.E. # 11013-1002	KZ400B/C KZ440B	78-79 80-81
12-92550	O.E. # 11013-1058	GPZ400 KZ550H (GP) Z400F	83 82-83 83-84
12-92800	O.E. # 11013-1005	KZ400/A KZ650	76-78 77-80
12-93010	O.E. # 11013-1126	EN450/454 LTD **REQUIRES 2** ***SOLD IN PAIRS***	85-90
12-92550	O.E. # 11013-1058	KZ550H (GPZ)	82-83
12-92510	O.E. # 11013-1157	ZR400C ZEPHYR / JAP. ZX400D GPZ400R / JAP. Z550G GT550 ZR550B ZEPHYR ZX600A Ninja ZR750C/D / ZEPHYR ZR750F/H ZR7	89-93 85-86 87-01 90-93 85-87 91-03 99-05
12-92900	O.E. # 11013-1013	Z400J ZX400C Z500B Z550D / GPZ550 ZX550A / GPZ-UNI Z550G / GT550 Z550A/B/C KZ550A/C/D/F/M ZX600B	80-83 84-87 79-81 81 84-86 83-86 79-83 80-84 1987
12-92944	O.E. # 11013-1060	KZ650H / CSR KZ700A KZ750F / LTD-SHAFT KZ750H/L KZ750N / SPECTRE KZ750R / GPZ ZN700A / LTD-SHAFT	81-83 84 83 80-83 82-83 82 84-85
12-92700	O.E. # 11013-1025	KZ650H Z650F3 Z750E/H/L	78-80 82 80-82
12-92500	O.E. # 11013-034	Z1 - 900	73-75
12-92502	O.E. # 11013-058	KZ900A/B	76-77
12-92610	O.E. # 11013-1037	KZ1000J/K/M/R KZ1000P / POLICE KZ1100A/D/L Z1100A/R	81-83 82-05 81-83 81-86
12-92600	O.E. # 11013-063	KZ1000A/B KZ1000C KZ1000D Z1000A Z1000D / Z1R	77-81 78-81 78-80 77-81 78
12-92542	O.E. # 11013-1128	ZX1000A / GPZ1000RX	86-89
12-92620	O.E. # 11013-1040	KZ1100B (GPZ) ZN1100B (LTD)	81-82 84-85
12-92940	O.E. # 11013-1074	ZX1100 (GPZ)	83-84

BRAKE CABLE 26-58401

KAWASAKI H1 FRONT BRAKE CABLE.
CABLE IS AN OEM REPLICA WITH A
GREY/SILVER OUTER
SHEATH AND A BRAKE LIGHT SWITCH.



OIL FILTERS OIL FILTER BOLT, CLUTCH PLATES

Oil Filters

KAWASAKI	YEAR	Element	Spin on Chrome	Spin on Black
KZ 200	77-83	10-30000		
KZ 250	80-83	10-30000		
KZ 305/ CSR	82-88	10-73900		
KZ 305 LTD	87-88	10-73900		
EX 350 GPZ	83-97	10-73900		
EX 400	94-95		10-82200	10-82210
GPZ 400 R	85-86	10-20300		
KZ 400	74-83	10-20300		
Z 400	78-83	10-20300		
KZ 440	80-88	10-20300		
GT 550	87-89	10-20300		
KZ 550 All Models	77-84	10-20300		
Z550 GT550	79-01	10-20300		
Z650	77-80	10-20300		
KZ 750 LTD	80-84	10-20300		
KZ 750B Twin	76-83	10-24400		
KZ 900 LTD	76-77	10-24400		
KZ 900/Z1	73-76	10-24400		
GPZ 1000 RX	86-88	10-20300		
KZ 1000 A-E	77-80	10-24400		
KZ 1000	81-05	10-20300		
ZX 1000 A	83-90	10-20300		
GPZ 1100 B	81-82	10-20300		
KZ 1300	79-83	10-24400		

OIL FILTER BOLT 11-35100

(J model type) Replaces oem:
16126-1001/1108



CLUTCH PLATES



88-17598
(8 PLATE SET)

REPLACES OEM 13088-030. FITS:

- Z1/A/B 73 - 75
- KZ1000 G1 Classic 80
- KZ900 A4/A5 76 - 79
- KZ1000 A1-A4/H1-H2 77 - 81
- KZ00 B3/B4 LTD 78 - 80
- KZ1000 D1-D3 Z1R 78 - 80



88-17589
(9 PLATE SET)

REPLACES OEM 13088-1013/51 FITS:

- KZ1000 E1/E2 ST Shaft 79 - 80
- GPZ1100 A1-A3 82 - 85
- KZ1000 J1-J3 81 - 83
- KZ1100 A1-A3/ R1 81 - 84
- KZ1000 R2 83
- KZ1100 Spectre 82 - 83
- GPZ1100 B1-B2 81 - 82

COMPLETE AND TOP END GASKET SETS



Emgo #	Type	Brand	Fitment/model	Year
13-59103	complete	Honda	CB750/900F	1979 - 1982
13-59341	complete	Honda	CB250K4	
13-59342	complete	Honda	CB250G5/CT	
13-59345	complete	Honda	CB400F/F2	
13-59371	complete	Honda	CB500T	
13-59378	complete	Honda	CB/CL350	1970 - 1973
13-59379	complete	Honda	CB350K	
13-59382	complete	Honda	CB650/650CM	
13-59384	complete	Honda	CB750F/F1	
13-59385	complete	Honda	CB750KZ/KF	
13-59388	complete	Honda	CB900F	
13-59391	complete	Honda	CB400F/F2	
13-59392	bottom	Honda	CB900	
13-59482	top end	Honda	CB650/CB650CM	
13-59486	top end	Honda	CB750 K1 - K6	
13-59488	top end	Honda	CB900/CB900F	
13-59491	top end	Honda	CB550K1	
13-59504	complete	Honda	CB750	
13-59600	complete	Honda	CB550	
13-60207	complete	Kawasaki	KZ1000	1977 - 1978
13-60208	complete	Kawasaki	KZ1100	
13-60209	complete	Kawasaki	KZ650	1978 - 1980
13-60210	complete	Kawasaki	KZ650B	
13-60211	complete	Kawasaki	KZ1300	
13-60212	complete	Kawasaki	KZ750H	
13-60213	complete	Kawasaki	KZ/Z400B	
13-60214	complete	Kawasaki	Z1A,Z1B, KZ900	1974 - 1977
13-60216	complete	Kawasaki	KZ550A1/A2/A3	1980 - 1982
13-74733	complete	Suzuki	GS750B/DB/C/DC	1977 - 1979
13-74737	complete	Suzuki	GT380J/K	
13-74739	complete	Suzuki	GT550	
13-74776	complete	Suzuki	GS550	
13-74777	complete	Suzuki	GS1000	
13-74778	complete	Suzuki	GS650	
13-74875	top end	Suzuki	GS850	1979 - 1981
13-74876	top end	Suzuki	GS850	1982 - 1983
13-74878	top end	Suzuki	GS650	
13-80231	complete	Yamaha	RD250X	
13-80232	complete	Yamaha	RD/RZ250LC	
13-80234	complete	Yamaha	RD400DX	
13-80262	complete	Yamaha	XT500/XT500C	
13-80280	complete	Yamaha	XS1100	
13-80285	complete	Yamaha	SR500	
13-80288	complete	Yamaha	XS650	1975 - 1981
13-80334	top end	Yamaha	RD400DX	
13-80362	top end	Yamaha	XT500/XT500C	



FORK SEALS, GASKETS, WASHERS, CIRCLIPS

Fork Seal Washers and Circlips



19-90120

Case Quantity 100 kits

Replaces Washer oem: 44043-044
 Circlip oem: 44044-012
 Fits: KL250 1978-1979, KX 250 1974-1976, KX400 1975-1976, H1C 1972, KH500 1976, KZ560 1977-1979, KZ650 Custom 1977-1979, KZ650 (SR) 1978-1979, KZ650 LTD 1980, KZ650 F1 1980, H2 1972-1975, KZ750 (LTD II) 1980, Z1, Z1A, Z1B 1977-1980, KZ1000 Z1R 1978-1980,

Kawasaki Fork Cover Gaskets, Washers



66-35881

66-35882

66-35883

66-35881

Fork Cover gasket, Replaces oem: 44045-038
 Fits: H1 500 73-75, KH 500 76, KZ550 Spectre/LTD Shaft 83-84, KZ650B/C 77-79, KZ650F 80, KZ700A1 84, ZN700 LTD Shaft 84-85, H2 750 72-75, KZ750B 76-79, KZ750 83, KZ750 GPZ 82, KZ900 76-77, Z1-Z1B 73-75, KZ1000A 77-80, KZ1000D 78-80.

66-35882

Fork Cover washer,
 Rplcs oem:
 44064-005

66-35883

Fork Cover guide washer,
 Rplcs oem:
 44045-008

66-35882, 66-35883 Both fit: KZ650B/C 77-79, KZ650F 80, KZ750B 76-79, KZ750 GPZ 82, KZ900A 76-77, Z1-Z1B 73-75

FORK SEALS

19-90126	31 X 43 X 10
KAWASAKI	YEARS
KX 80	82
KE 125	82-83
KZ 250L	82
EX 305 GP	83
19-90128	32 X 44 X 10.5
KAWASAKI	YEARS
KE 175	76-78
19-90129	33 X 46 X 10.5
KAWASAKI	YEARS
KX 80	83
S1 250	73-75
KZ 305A/B CSR	81-88
S2 350	72-73
KZ 400	74-79
KZ 440D LTD	80-83
19-90134	35 X 48 X 11
KAWASAKI	YEARS
KX 80	86-91
KE 175	79-83
EX 250E	86-87
KZ 550H GPZ	82-83
ZX 550A GPZ	84-86
H2 750	72-75
Z1 900	73-75
19-90135	36 X 48 X 8 / 9.5
KAWASAKI	YEARS
KX 80T	92-00
KX 85	01-10
KX 100	95-09
KZ 550 Specter/LTD	83-84
ZX 550 GPZ	84-86
KZ 650H CSR	81-83
KZ 700A	84
KZ 750E	80-82
KZ 750 LTD	80-84
KZ 750 CSR	82
KZ 750L/R	83
19-90136	36 X 48 X 10.5
KAWASAKI	YEARS
KX 125	78-79
KDX 175	80-82
KL 250 KLR	85-05
KLX 250	79-80
KX 250	78-79
KXT 250	84-85

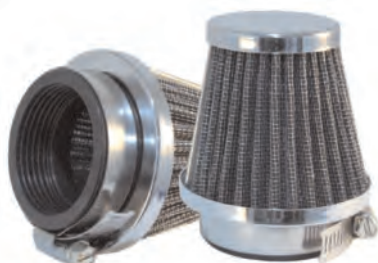
19-90136	36 X 48 X 10.5
KAWASAKI	YEARS
H1 500	72-75
KH 500	76
KZ 650 B/C	77-80
KZ 750 LTD	76-80
Z1 900	73-75
KZ 900	76-77
KZ 1000 A/B	77-80
19-90137	36 X 48 X 11
KAWASAKI	YEARS
EL 250	88-94
EX 250	88-06
EN 450 LTD	85-90
EN 500 Vulcan	90-96
EX 500	87-93
KZ 550A	80-83
KZ 550C LTD	80-83
KZ 750F1 LTD	83
KZ 750N Spectre	82-83
19-90140	37 X 49 X 8/9.5
KAWASAKI	YEARS
ZL 600A	86-87
ZL 600B Eliminator	96-97
ZX 600A/B Ninja	85-87
ZX 750A GPZ	83-85
ZX 750E Turbo	84-85
ZX 1100A GPZ	83-84
19-90142	38 X 50 X 8/10
KAWASAKI	YEARS
ZX 600C Ninja	88-97
ZX 750F Ninja	87-90
ZX 900A Ninja	84-86
KZ 1000J	81-83
KZ 1000K LTD	81-82
KZ 1000P Police	82-01
KZ 1000M CSR	81-82
KZ 1000 ELReplica	82-83
KZ 1100A	81-83
KZ 1100B GP	81-82
KZ 1100D Spectre	82-83
KZ 1100L LTD	83
ZN 1100B LTD	84-85
19-90143	38 X 50 X 10.5
KAWASAKI	YEARS
KZ 1000C Police	78-81
19-90146	40 X 52 X 8/9.5
KAWASAKI	YEARS
KZ 1000E Shaft	79-80
ZX 1000A Ninja	86-87

AIR FILTERS, BAR END MIRRORS



UNIVERSAL CLAMP-ON TAPERED AIR FILTERS WITH CHROME END CAP

- 12-55728 28MM
- 12-55735 35MM
- 12-55739 39MM
- 12-55742 42MM
- 12-55746 46MM
- 12-55748 48MM
- 12-57752 52MM
- 12-57754 54MM
- 12-55760 60MM



12-55780 45MM



20-34000 CHROME

BAR END MIRRORS

20-34010 BLACK



7/8" HANDLEBAR. BLACK OR CHROME.
FITS LEFT OR RIGHT.

TRUE VISION BAR END MIRRORS 20-34020

UNIVERSAL MOUNTING BAR END MIRRORS
WITH TRUE VISION MIRRORS BAR END MIRROR
WITH NEW LOOK "EL-CHICO"
SMALLER RECTANGULAR MIRROR.





Please Note We Have Many Handlebar Bends In Both 7/8" and 1" Diameter. For More Details See Our Control Catalog Available Online at www.emgo.com

HANDLEBARS

CLUBMAN BARS AVAILABLE IN 1" OR 7/8" CHROME AND BLACK

- 23-12538 CHROME 7/8" DIAMETER
- 23-12539 BLACK 7/8" DIAMETER
- 23-12558 CHROME 1" DIAMETER
- 23-12559 BLACK 1" DIAMETER



NEW 7/8" AND 1" CLIP-ONS IN BLACK OR CHROME



7/8" DIAMETER

- 23-93121 CHROME 35MM
- 23-93123 CHROME 34MM
- 23-93131 CHROME 33MM
- 23-93135 CHROME 36MM
- 23-93139 CHROME 41MM

- 23-93122 GLOSS BLACK 35MM
- 23-93124 GLOSS BLACK 34MM
- 23-93132 GLOSS BLACK 33MM
- 23-93136 GLOSS BLACK 36MM
- 23-93140 GLOSS BLACK 41MM

1" DIAMETER

- 07-93137 CHROME WITH DIMPLES 39MM
- 07-93138 GLOSS BLACK WITH DIMPLES 39MM
- 23-93143 CHROME 41MM
- 23-93144 BLACK 41MM

GRIP SETS

- 42-28700 GT GRIP SET FITS 7/8" BARS
- 42-28710 GT GRIP SET FITS 1" BARS.
- 42-56510 JACK HAMMER GRIP SET FITS 1" BARS
- 42-56578 JACK HAMMER GRIP SET FITS 7/8" BARS



42-28700



42-56578

CLASSIC REPRODUCTION CONTROLS



- 32-69652 CLUTCH
- 32-69651 BRAKE
- AMAL STYLE, DIE CAST
- WITH CABLE ADJUSTER
- FOR 7/8" BARS.



- TOMMASELLI REPLICA
- ASSEMBLIES
- 32-73760 PAIR R/L



- 32-69680 PAIR
- 32-69682 CLUTCH
- 32-69681 BRAKE
- DOHERTY REPLICA CLUTCH
- AND BRAKE ASSEMBLIES
- FOR CLASSIC APPLICATIONS.

SWITCHES, BRACKETS CUSTOM TAILLIGHTS



UNIVERSAL IGNITION SWITCH & BRACKET

40-64000

UNIVERSAL IGNITION/ LIGHT SWITCH.
THREE POSITION. COMES WITH TWO KEYS.
IDEAL BRITISH BIKE REPLACEMENT FOR MANY MODELS



40-64050

CHROME PLATED UNIVERSAL SWITCH BRACKET.
SWITCH HOLE IS 22.5MM, BOLT HOLE IS 9.5MM OVERALL
LENGTH IS 75MM

CLASSIC CUSTOM TAILLIGHTS/BAR END WINKERS



62-21515
CUSTOM TAILLIGHT
VIEWABLE LENS IS 1 5/8"
(48MM) IN DIAMETER.
UTILIZES A 12V 23/8W DUAL
FILAMENT BULB PROVIDING
BRAKE AND RUNNING
LIGHTS AS WELL AS
LICENSE PLATE
ILLUMINATION. INCLUDES
MOUNTING BRACKET/
LICENSE PLATE BRACKET.
REPLACEMENT BULB 48-66512



62-21512 BLACK
62-21514 CHROME
CLASSIC TAILLIGHT
ROUND 2-1/4" TAILLIGHT.
AVAILABLE IN BLACK OR
CHROME BODY WITH STEEL
MOUNTING BRACKET.
12V 23/3W BULB
(EMGO# 48-66512)



60-14550
7/8" BARS
60-14560
1" BARS
BMW STYLE BAR END
DECO LIGHTS. 7/8" BARS.
SOLD AS A PAIR



62-21550



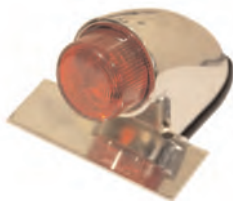
62-21521



62-21624

62-21510 ASSEMBLY WITH PRE - '65 LUCAS STYLE TAILLIGHT.
62-21521 LUCAS - STYLE CUSTOM LIGHT WITH MOUNTING BRACKET
62-21550 PRE - '65 LUCAS STYLE WITH CHROME DIE CAST MOUNTING BRACKET
62-21624 HIGH QUALITY CHROME PLATED ALUMINUM, DIE CAST MOUNTING BRACKET
CATEYE TAILLIGHT (LENS 5"X2 3/4") FENDER MOUNT. MOUNTING
BRACKET, RUBBER GASKET AND HARDWARE INCLUDED. TAILLIGHT ONLY 62-21620
(NOTE: ALL ASSEMBLIES COME COMPLETE WITH MOUNTING HARDWARE AND RUBBER
GASKET. USES TAILLIGHT 62-21522)

SPARTO TAILLIGHT REPLICAS



62-30390 CHROME
62-30391 POLISHED
62-30392 LED/ CHROME
62-30393 BLACK



LED TAILLIGHT
62-30362 CHROME

CASE QUANTITY IS 20 PIECES



62-30360 CHROME FINISH
62-30361 POLISHED
62-30363 BLACK POWDERCOAT

66-64312 CHROME WITH QUARTZ UNIT **PLUS** H4 BULB
 66-64313 BLACK WITH QUARTZ **USE WITH** H4 BULB
 6-1/4" REPLACEMENT HEADLIGHTS THESE GOOD LOOKING, INEXPENSIVE
 REPLACEMENT HEADLIGHT UNITS ARE AVAILABLE IN CHROME OR
 GLOSS BLACK WITH CHROME RIMS.
 6-1/2" BETWEEN FORK EARS MOUNTING HOLES.
 REPLACEMENT BULBS: H4 BULB: 48-67700
 STANDARD BULB: 48-65802



66-65010 7" KAWASAKI Z1/KZ STYLE HEADLAMP; BLACK
 HEADLIGHT SHELL & RIM ONLY

66-65020 7" KAWASAKI Z1/KZ STYLE HEADLAMP; CHROME
 HEADLIGHT ASSEMBLY INCLUDES
 12V H4 BULB AND PARKING LIGHT; E-MARKED.
 MOUNTING HOLES ARE 10MM INSTEAD OF 8MM

66-65040 7" KAWASAKI Z1/KZ STYLE HEADLAMP; CHROME
 HEADLIGHT SHELL & RIM ONLY

66-65050 7" KAWASAKI Z1/KZ STYLE HEADLAMP;
 CARBON LOOK HEADLIGHT SHELL & RIM ONLY
 *HEADLIGHT SHELL & RIM ONLY



FOR UNIVERSAL APPLICATION

66-65066 CHROME
 66-65068 BLACK
 66-65069 CARBON FIBER STYLE
 WITH CHROME RIM
 REPLACES LUCAS OEM: 54520774

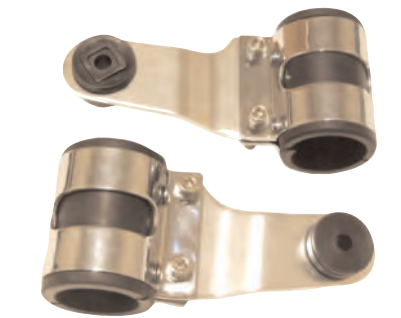


HEADLIGHT VISORS

66-10710 HEADLIGHT VISOR 7"
 66-10721 HEADLIGHT VISOR 5 3/4"
 *HEADLIGHT NOT INCLUDED -
 SOLD SEPARATELY!



MOUNTING BRACKETS



66-35850
 UNIVERSAL LIGHTWEIGHT
 CHROMED
 STEEL/ALUMINUM
 HEADLIGHT BRACKETS.
 SUPPLIED WITH 35MM
 RUBBER SLEEVES
 NEW SLEEVES FOR
 66-35850
 66-35855 32MM
 66-35851 35MM
 66-35852 38MM
 66-35854 41MM



66-35800 CHROME
 66-35810 BLACK FINISH
 HEADLIGHT BRACKETS
 UNIVERSAL HEADLIGHT
 BRACKETS THAT WILL FIT
 MOST FRONT FORKS.
 EACH PAIR INCLUDES ALL
 MOUNTING HARDWARE.

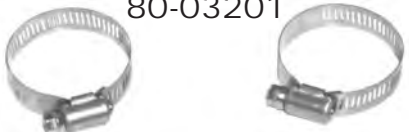


66-35830 POLISHED
 ALUMINUM
 66-35832 SATIN BLACK
 HEADLIGHT BRACKET
 WITH SHIMS
 BRACKETS WITH SHIMS FOR
 UNIVERSAL APPLICATIONS.
 FITS: 35MM, 39MM, 41MM

**HEAT SHIELDS, EXHAUST CLAMPS
MUFFLER MOUNTING BRACKETS
EXHAUST REDUCERS**



80-03201



80-03200



80-47310

THIS KIT REDUCES 44.5MM (1 3/4" IN DIAMETER) TO 42.5MM, 40.5MM AND 38.5MM. 1MM THICKNESS.

80-84009

1/16" THICKNESS REDUCES 1 3/4" IN DIAMETER TO 1-5/8", 1-1/2", 1-3/8" INCREMENTS



CHROME EXHAUST CLAMPS

SIZE	SHORT CLAMP
1-1/2"	80-62340
1-5/8"	80-62341
1-3/4"	80-62342
1-7/8"	80-62343
2"	80-62344
3"	80-62372



80-62303



80-62306



80-62308



80-62316

MUFFLER MOUNTING BRACKETS

VERSATILE CHROME PLATED BRACKETS. USEFUL FOR MOUNTING MUFFLERS OR MANY OTHER USES.

AVAILABLE IN TWO DESIGNS.

SINGLE HOLE

80-62303 3" Long

80-62306 6" Long

80-62308 8" Long

6 HOLE

80-62316 6" Long

80-62318 8" Long



80-62318

MEGAPHONE
(BELL END) STYLE

WITH REMOVABLE BAFFLE
AVAILABLE IN UPSWEPT
OR STANDARD STYLE.
1-3/4 INLET WITH REDUCER
TO ALSO FIT 1-5/8, 1-1/2.
SOLD EACH

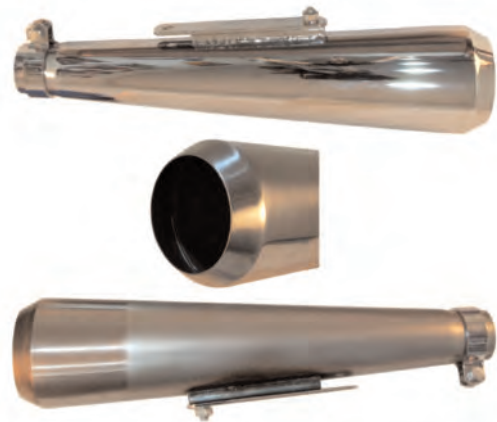


80-84010 Fits right or left
80-84011 Upswept right
80-84012 Upswept left

REVERSE CONE MEGAPHONE MUFFLER
CHROME FINISH 80-84029
RAW STEEL FINISH 80-84029R

MODIFIED VERSION OF OUR MOST POPULAR
SHORTY REVERSE CONE MEGAPHONE
"MUFFLER".

WE HAVE COMPLETELY GUTTED OUR 80-84030
LEAVING A TRUE REVERSE CONE MEGAPHONE.
THE REVERSE CONE IS NOW WELDED AS
THERE IS NO NEED FOR ACCESS TO A BAFFLE.
LEAVING A SMOOTH TRADITIONAL LOOK.
FINISH WILL BE EITHER DOUBLE PLATE
CHROME OR RAW STEEL. PERFECT
FOR THE CURRENT CAFE RACER REVIVAL.
1 3/4" INLET. INCLUDES 3 PC. REDUCER
SET FOR SMALLER PIPES.



ROADHAWK 60 MEGAPHONE

80-84035 CHROME

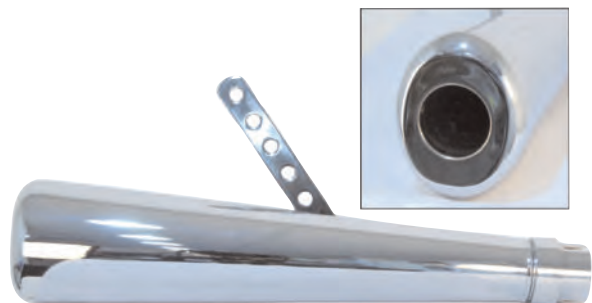
50'S-60'S STYLING FOR YOUR PERIOD CUSTOM.
16-1/8" OVER ALL LENGTH, 3" DIAMETER AT THE
WIDEST POINT, 1-3/4" INLET,
PERFORATED CORE BAFFLES,
TAPERS FROM 1 TO 1 1/2" AT THE EXIT.
PINCH BOLT MEANS NO CLAMP NEEDED AT THE
HEADER FOR A SMOOTH CLEAN LOOK. FITS
RIGHT OR LEFT, MOUNTING BRACKET AND
3-PC REDUCERS INCLUDED.
SOLD PER. EACH



ROADHAWK 50 OVAL MEGAPHONE

80-84031 CHROME

17.5" OVERALL LENGTH, 96MM X 76.5MM
AT THE WIDEST POINT. 1 3/4" INLET.
INCLUDES 3 PIECE REDUCER SET,
CLAMP AND MOUNTING BRACKET.



CUSTOM MUFFLERS BRITISH REPLICAS MUFFLERS



26" LONG UNIVERSAL
MEGAPHONE STYLE
80-84034

FITS: 1-3/4", 1-3/8", 1-1/2" AND 1-5/8"

CAFÉ MUFFLER



80-84032 CHROME FINISH
80-84033 FLAT BLACK FINISH
CAFÉ MUFFLER AVAILABLE IN FLAT BLACK OR
CHROME. 19" (483MM) OVERALL LENGTH.
1-3/4" INLET. STRAIGHT THROUGH
PERFORATED CORE TYPE BAFFLE. SLOTTED
CHANNEL TYPE MOUNT FITS RIGHT OR LEFT.
1-5/8", 1-1/2" AND 1-3/8" (3 PIECE) REDUCER
KIT INCLUDED

UNIVERSAL "DUNSTALL" STYLE REPLICAS MUFFLER



80-84050 CHROME
COMPLETE WITH INLET CLAMP, SLIDING
BRACKET AND SLEEVES. MUFFLER HAS A
1-5/8" I.D. WITHOUT
REDUCERS. SLEEVES ARE SUPPLIED TO
REDUCE I.D. TO 1-1/2" OR 1-3/8".
WIDE MOUTH OUTLET 27 1/2" LONG

UNIVERSAL "DUNSTALL" STYLE MUFFLER



80-84051 CHROME
COMPLETE WITH INLET CLAMP, SLIDING
BRACKET AND SLEEVES. MUFFLER HAS A 1-
5/8" I.D. WITHOUT REDUCERS. SLEEVES ARE
SUPPLIED TO REDUCE I.D.
TO 1-1/2" OR 1-3/8".
WIDE MOUTH OUTLET 27 3/4" LONG

UNIVERSAL GOLDSTAR STYLE



80-84077
CHROME LEFT OR RIGHT HAND
STRAIGHT INLET, SLOTTED CHANNEL
MOUNTING BRACKET.
INCLUDES 3 PIECE REDUCER SET.
INLET SIZE 1-3/4"

VIPER FAIRING

70-52501
RETRO STYLING UNIVERSAL
FITTING INCLUDES MOUNTING HARDWARE
70-52520
REPLACEMENT WINDSHIELD
70-52540
MOUNTING KIT



GOGGLES



76-50122
WITH UV400 EYE
PROTECTION,
ADJUSTABLE STRAP.

Black	Description	Chrome
76-50120	LEATHER	76-50122
76-50100	VINYL	76-50101



76-50150
AMERICA'S "BIKER" GOGGLES.
ANTI-FOG, EASY TO CHANGE
REPLACEMENT LENSES IN YOUR
CHOICE OF 4 COLOR TINTS.

Goggles	Description	Lens Set
76-50150	CLEAR	76-50160
76-50151	BLUE	76-50161
76-50152	AMBER	76-50162
76-50153	SMOKE	76-50163



76-50110
DURABLE, AFFORDABLE
1-PIECE GOGGLES WITH
ANTI-FOG LENSES.

Black	Description	Chrome
76-50140	LEATHER	76-50142
76-50110	VINYL	76-50111

TAX DISC HOLDERS

86-28820
ROUND "CLASSIC" STYLE WITH CHROME FINISH. STAINLESS
STEEL FRONT RING WITH CHROME PLATING BACKING.



DECO STYLE LICENSE PLATE BOLTS

85-83400
BOLT AND NUT SETS ARE PACKAGED (2) PER POLY BAG.
THERE ARE (10) BAGS TO A DISPLAY CARD



85-83410
BOLT AND NUT SETS ARE PACKAGED (2) PER POLY BAG.
THERE ARE (10) BAGS TO A DISPLAY CARD

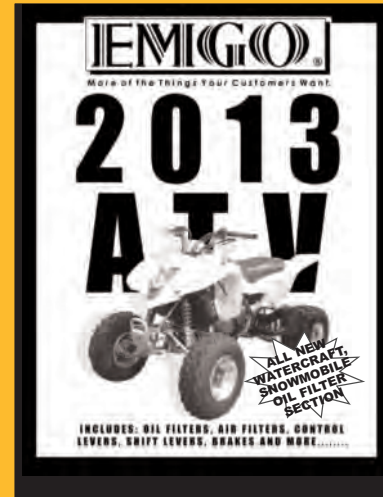
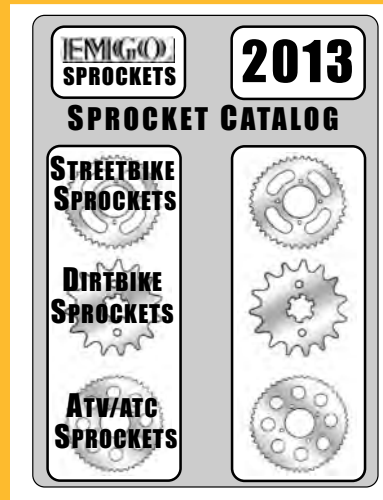


2013 General Catalog
contains: Air/Oil Filters,
Mirrors, Exhaust, Tools,
and Electrics.



2013 ATV Sprockets

2014 Classic Catalog
with NEW Cafe
Racer section



2013 Control Catalog

2013 ATV Updates

2013 Brake Pads
and Shoes

GIVE YOURSELF THE EMIGO ADVANTAGE!

www.emgo.com. has been updated with our latest catalogs and new product information available to download.

Go to www.emgo.com (Home Page) and download catalogs and Passports which contain all new items for 2013.

Or contact us at:



Phone: (770) 944-3532



Fax: (770) 944-7672



Mail to: EMGO Int'l Ltd.
PO Box 664
Mableton, GA
30126 U.S.A.



Visit our updated website at:
Internet: www.emgo.com

Email: emgo@emgo.com

NOT JUST FILTERS & MIRRORS....

People know us for our Filters & Mirrors because we are one of the worlds leading suppliers of motorcycle Filters & Mirrors. We are also a major supplier of Brake Pads, Control Levers, Footpegs, Goggles and many other aftermarket powersport products.

In fact, we have over 4,000 catalogued parts that we supply to over 100 Distributors throughout the world.

If you are now offering your customers quality EMGO products, then you know our products are profit makers.

If you are still not offering your customers EMGO products, then you are missing out.

*RETAIL DEALERS:
CONTACT YOUR EMGO DISTRIBUTOR TODAY!*



THE AMERICAN MOTORCYCLE
PROFESSIONALS IN
ASIA SINCE 1967

DISTRIBUTED BY:



www.emgo.com

emgo@emgo.com