



Fender Eliminator Kit

APPLICATION

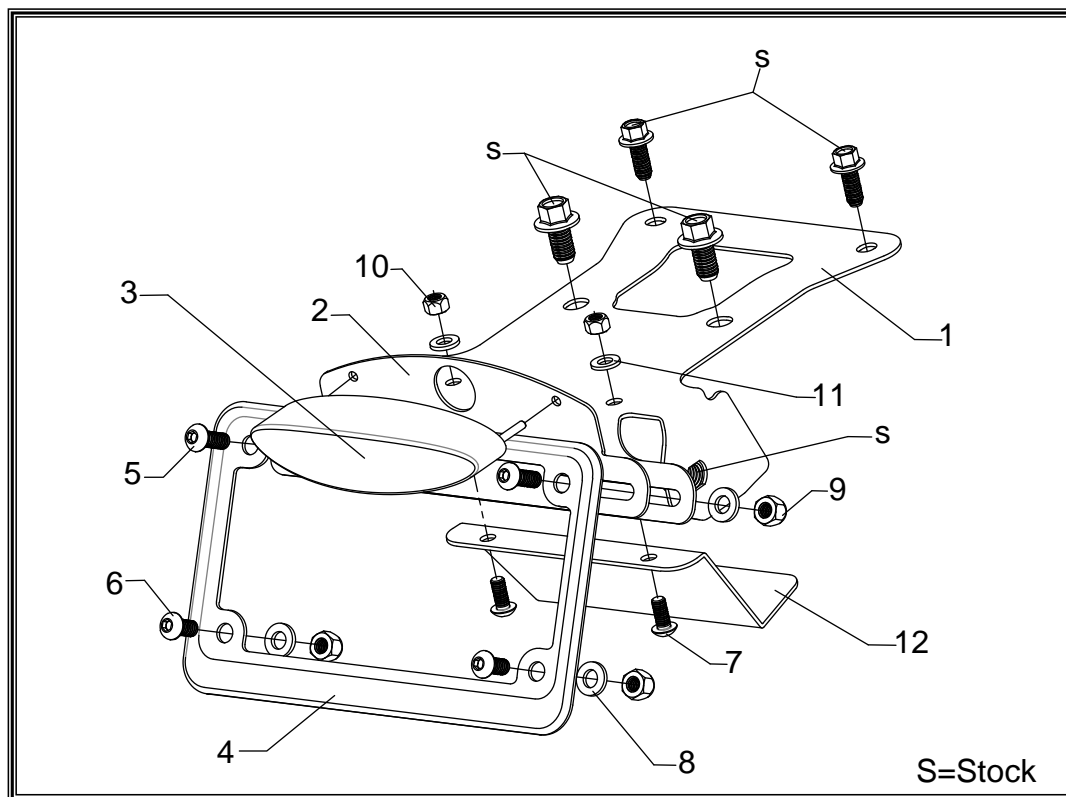
YEAR	MODEL
2013-2014	Honda CRF 250L

PRODUCT

070BG123500	Fender Eliminator Kit
-------------	-----------------------



This product is not DOT approved. Yoshimura R&D of America, Inc. is not liable or responsible for any resulting event caused by the installation of this product. Check with local laws and regulations for compliance prior to installation and use. This product is not intended for use on public highways.



No.	Part #	Description	Qty
1	12350-FEBKT1	Yoshimura Fender Eliminator Bracket	1
2	12350-FEBKT2	Yoshimura License Plate Bracket	1
3	602020-2	Yoshimura Fender Eliminator Light	1
4	070BG-LPF	Yoshimura License Plate Frame	1
5	M6X16BHS	6mm x 16mm Button Head Screw	2
6	M6X12BHS	6mm x 12mm Button Head Screw	2
7	M5X12BHS	5mm x 12mm Button Head Screw	2
8	6MMWASHER	6mm Washer	4
9	6MMLN	6mm Lock Nut	4
10	5MMLN-U	5mm Lock Nut	2
11	5MMWASHER	5mm Washer	2
12	12350-FEBKT3	Aluminum Cover Plate	1
**	94785-01-ND	Butt Connectors	3
**	17029	Yoshimura Sticker Sheet	1

-TOOLS REQUIRED-

Metric Socket Set • Combination Wrench Set • Metric Allen Wrench Set • Wire Crimper

-REMOVAL-

- 1. Remove left and right side panel.**
- 2. Remove seat and tail as per factory service manual.**
- 3. Disconnect turn signal, brake light, and license plate light wires.**
- 4. Remove the (4) bolts securing the stock fender to frame.**
- 5. Remove stock turn signals from fender assembly.**
- 6. Cut the stock brake light connector from the stock fender.**
Note¹: Be sure to cut as close to the stock brake light as possible. (Green/Yellow Stripe, Black, Green)
Note²: The stock license plate light connector will not be used with the Yoshimura Fender Eliminator Kit.

-INSTALLATION-

- 1. Install stock turn signals onto Yoshimura Fender Eliminator Bracket using the stock hex nut that secures the turn signals.**
- 2. Assemble and install Yoshimura Fender Eliminator kit as shown in the parts diagram.**
- 3. Route wiring through hole in bracket, then through tail section to stock location. Re-connect turn signal connector to stock harness.**
- 4. Using the connectors provided in the kit, connect the Yoshimura brake light wires to the stock brake light connector as follows:**

<u>Stock Harness</u>		<u>Yoshimura Light</u>
Green/Yellow	>>>>	Red
Black	>>>>	Yellow
Green	>>>>	Black

- 5. Re-install tail and seat using the reverse steps of removal.**
- 6. Re-install left and right side panels.**
- 7. Check for function of license plate light and that all brackets and pieces are secure prior to riding.**