

YAMAHA MT-09/ABS/MT-09 TRACER/XSR900 STREET SPORTS FULL SYSTEM R-77S CARBON END

Be sure to read the instruction carefully before starting the work. It is necessary to follow the contents to install Yoshimura product.



1. Product Information :

Description	YAMAHA MT-09/ABS/MT-09 TRACER/XSR900 STREET SPORTS FULL SYSTEM R-77S CARBON END			
Part Number	Stainless Sleeve (SSC)	: 170-380-5151	Cyclone Type	Y380S77C4
	Metal Magic Sleeve (SMC)	: 170-380-5121	Main Material	Stainless steel
	Titanium Sleeve (STC)	: 170-380-5181	Weight	(SSC) & (SMC) : 6.0kg
	Titanium Blue Sleeve (STBC)	: 170-380-5181B	[STD : 8.5kg]	(STC) & (STBC) : 5.8kg

2. Applicable Model :

Model	YAMAHA MT-09/ABS/MT-09 TRACER/XSR900
-------	--------------------------------------

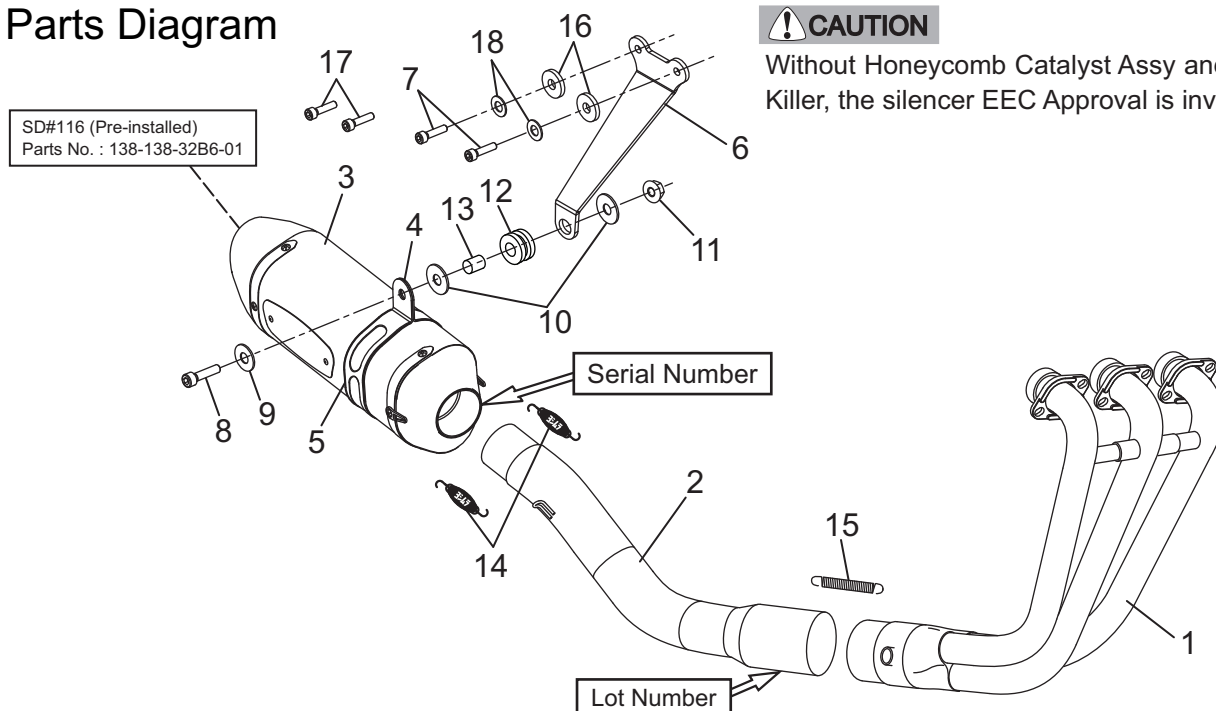
3. Contents:

No.	Descriptions	Part No.	Q'ty	No.	Descriptions	Part No.	Q'ty
1	Header Assy	1A7-380-5101	1	9	Washer M8x20	812-108-2000	1
2	Tailpipe	185-380-5101	1	10	Washer M8x26	812-108-2600	2
3	Silencer Assy, (SSC)	1A6-380-5150	1	11	Flange Nut M8	823-008-1250	1
	Silencer Assy, (SMC)	1A6-380-5120		12	Grommet Rubber	553-565-0000	1
	Silencer Assy, (STC)	1A6-380-5180		13	Grommet Spacer	850-208-1212	1
	Silencer Assy, (STBC)	1A6-380-5180B		14	Exhaust Spring	118-001-2000	2
4	Silencer Band	162-41R-G500	1	15	Exhaust Spring (Long)	118-000-1000	1
5	Silencer Band Rubber	896-016-0835	1	16	Spacer 8-28-5	860-008-2805	2
6	Silencer Bracket	161-380-0220	1	17	Cap Bolt M8x25	800-208-5025	2
7	Cap Bolt M8x35	800-208-5035	2	18	Washer M8x16	812-108-1612	2
8	Cap Bolt M8x30	800-208-5030	1	*	Spring Inner Tube	118-000-1100	1

4. Optional Part : *To convert this Street Sports model to EEC approved model, following parts are required.

No.	Descriptions	Part No.	Q'ty	No.	Descriptions	Part No.	Q'ty
1	Tailpipe	115-380-5101	1	5	Flange Nut M8	823-008-1250	2
2	Tailpipe Bracket	161-380-0010	1	6	Honeycomb Catalyst Assy	194-380-0010	1
3	Cap Bolt M8x15	800-208-5015	1	7	Tailpipe dB Killer	138-138-35C4	1
4	Washer M8x26	812-108-2600	1				

Parts Diagram



CAUTION

Without Honeycomb Catalyst Assy and Tailpipe dB Killer, the silencer EEC Approval is invalid.