



YOSHIMURA

RESEARCH&DEVELOPMENT OF AMERICA, INC.

5420 DANIELS STREET STE A, CHINO CA., 91710 · (800) 634-9166 · (909) 628-4722 · FACSIMILE (909) 591-2198

www.yoshimura-rd.com

Signature Series

Qualified Manufacturer Declared "Replacement Part"

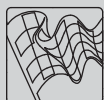
2017~2019

Honda CRF450R/RX

225840R520 (SS/SS)

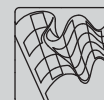
225841R720 (Ti/Ti)

RS-9 Taper Full-System



Signature Series systems are:

- CARB/EPA tail-pipe emissions compliant.
- Marked with appropriate EPA noise labels.
- Independent laboratory tested for EPA new vehicle noise compliance.

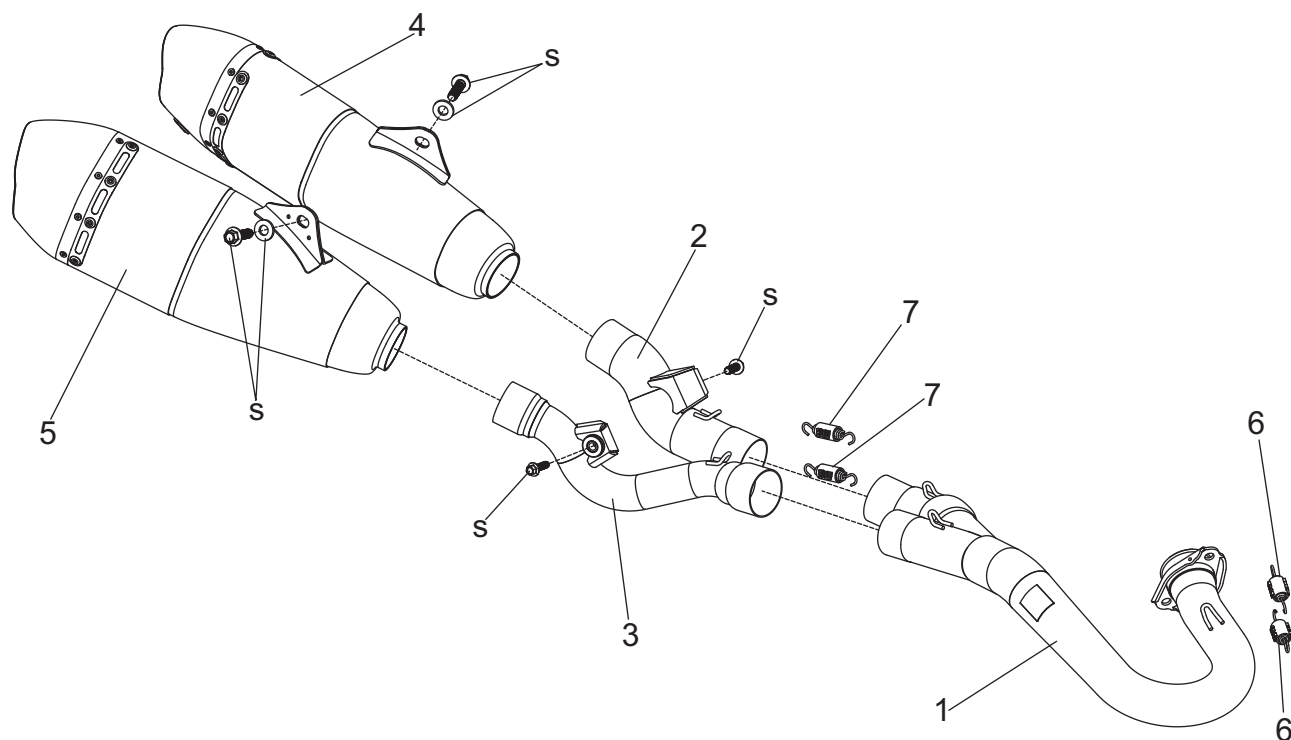


You must know how to remove and replace your stock exhaust in order to install this product otherwise have it installed by a professional mechanic. Keep all stock parts from your existing system as some components may be necessary to install your new Yoshimura exhaust depending on the application. Read through all instructions before beginning installation. Exhaust system can be extremely hot. Let motorcycle cool down before beginning installation. Always wear hand and eye protection and take precautionary measures to avoid injury.



NOTE: IN THE STATE OF CALIFORNIA, IT IS ILLEGAL TO MODIFY THE EMISSION CONTROL SYSTEM, WHICH INCLUDES THE CARBURETORS OF ANY VEHICLE.

Assembly Diagram



S = Stock

No.	Item	Description	Qty.
1	22584-104F 22584-705F	Yoshimura SS Header Kit Yoshimura Ti Header Kit	1
2	22583-144 22583-744	Yoshimura SS Tailpipe, Left Yoshimura Ti Tailpipe, Left	1
3	22583-145 22583-745	Yoshimura SS Tailpipe, Right Yoshimura Ti Tailpipe, Right	1
4	225830R520-LMA 225831R720-LMA	Yoshimura SS Muffler, Left Yoshimura Ti Muffler, Left	1
5	225830R520-RMA 225831R720-RMA	Yoshimura SS Muffler, Right Yoshimura Ti Muffler, Right	1
6	RACE-SPX-2	Small Exhaust Spring	2
7	RACE-SPS-1	Medium Exhaust Spring	2
**	INS-RS9B-K	Low Volume Sound Insert, 1.250" (Installed)	1
**	INS-RS9C-K	Low Volume Sound Insert, 1.125" (Installed)	1
**	05747076	3mm Hex Key	1
**	ST-200	Spring Puller Tool	1
**	17029	Sticker Kit Sheet	1
Optional Parts			
REPACK-RS9T-P10		Repack Kit	
SA-14-K		Spark Arrester Kit	
SA-15-K		Spark Arrester Kit	

** Not shown in diagram.

CAUTION: Exhaust system can be extremely hot. Let motorcycle cool down before beginning installation. Always wear hand and eye protection and take precautionary measures to avoid injury.

WARNING: Always properly support vehicle with a stand and/or lift when servicing or performing any work. Unstable vehicles may present dangerous conditions and may cause property damage and/or personal injury.

NOTE: Read through all instructions before beginning installation.

Removal

1. Remove the left and right side panels.
2. Loosen the left and right muffler exhaust clamp.
3. While securely supporting the left muffler assembly, remove the left side muffler chassis mount bolt and muffler mount bolt. Carefully remove the stock muffler assembly by sliding toward the rear.
4. While securely supporting the right muffler assembly, remove the right side muffler chassis mount bolt and muffler mount bolt. Carefully remove the stock muffler assembly by sliding toward the rear.
5. Remove the header nuts and carefully remove the stock header.

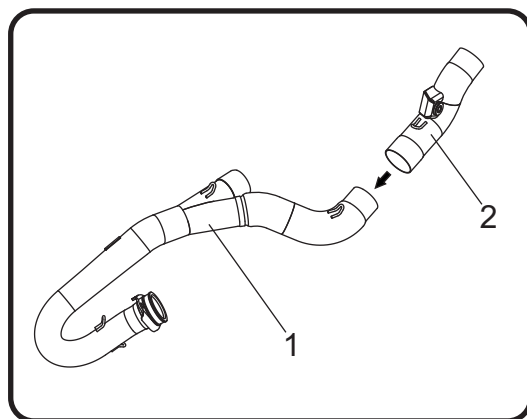
Note: The stock exhaust port gasket will be re-used with the Yoshimura full-system exhaust. Inspect and replace if necessary.

Installation

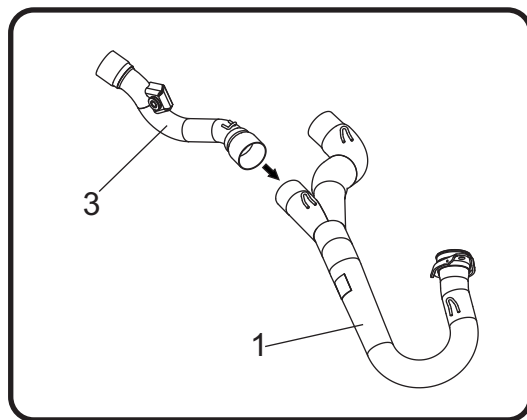
1. Install (No. 1) 22584-104F/705F, Yoshimura header using the stock header nuts. Do not torque at this time.

Note: For ease of installation, hook (No. 6) RACE-SPX-2, small exhaust springs onto flange before installing.

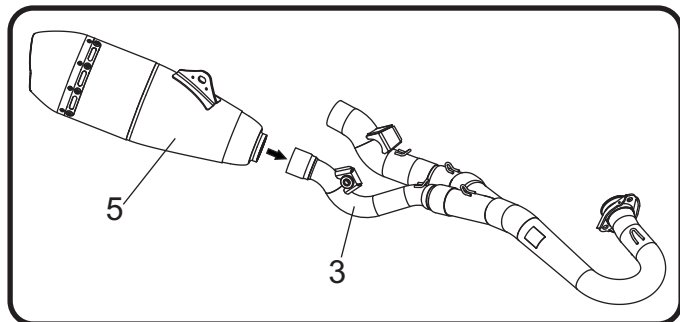
2. Install (No. 2) 22583-144/744, Yoshimura left tailpipe by sliding onto left header outlet. Align tailpipe chassis mount bracket to subframe and secure using the stock chassis mount bolt. Do not torque at this time.



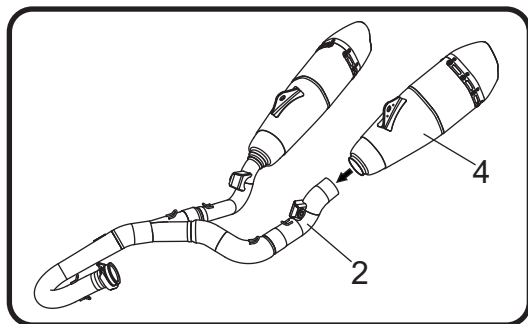
3. Install (No. 3) 22583-145/745, Yoshimura right tailpipe by sliding onto right header outlet. Align tailpipe chassis mount bracket to subframe and secure using the stock chassis mount bolt. Do not torque at this time.



4. Install (No. 5) *right muffler*, over (No. 3) 22583-145/745, right tailpipe outlet. Align muffler mount bracket to muffler mount and secure using the stock muffler mount bolt and washer. Do not torque at this time.



5. Install (No. 4) *left muffler*, over (No. 2) 22583-144/744, left tailpipe outlet. Align muffler mount bracket to muffler mount and secure using the stock muffler mount bolt and washer. Do not torque at this time.



6. Torque header nuts to factory specification.
7. Torque left and right tailpipe chassis mount bolt to factory specification.
8. Torque left and right muffler mount bolt to factory specification.
9. Using the ST-200, spring puller tool provided in the kit, install (No. 7) *RACE-SPS-1*, medium exhaust springs between tailpipe and header.
10. Install (No. 6) *RACE-SPX-2*, small exhaust spring onto flange and header connection.
11. Re-install left and right side panels following the opposite steps of removal.
12. Before starting motorcycle, check for proper clearance between new exhaust system and rear suspension (i.e. tire, swingarm, brakes, rear shock, and etc.) If any problem is found, please carefully follow through the installation steps again. If problem still persists, please call Yoshimura Tech Department at (800) 634-9166 / in CA (909) 628-4722.

13. It is recommended that the muffler and tailpipe be wiped down with rubbing alcohol to remove oil and fingerprints. This will help prevent tarnishing of the finish after the exhaust is heated up.

Note: After starting motorcycle, it is normal for new exhaust system and muffler to emit smoke until oil residue burns off.